

Section 6

Parts Lists

General

The information contained in this section is designed to aid the user in locating and identifying replacement parts. Component parts of various assemblies and sub-assemblies comprising the work platform are illustrated and accompanied by a descriptive parts list. Exploded drawings are used to show relative location of component parts in disassembly order. If a part cannot be found in this section, order by work platform model number and serial number, giving a complete description of the part.

Parts Ordering Information

When ordering replacement parts, the complete part number and description should be used to ensure proper identification and delivery of the desired item. This complete identification should also be used when requesting equipment information.

Method Of Listing

Parts are listed in order according to the reference number shown in the illustration, followed by a full description based upon the "NOUN FIRST" method. That is, the noun name of the part is listed first, then the modifying description information which serves to specifically identify the item. For example: PIN, Clevis. Assemblies or groups are shown at the beginning of a parts list and are identified with the letter references A, B, C, etc. Individual parts in these lists have corresponding letters after their description to identify which assembly or group it is used in. Individual parts

without identifying letters are used in all the assemblies or group shown at the beginning of the parts list. Descriptions preceded with an (•) indicates a serviceable component or attaching hardware for the higher level assembly.

Quantities (Units Per Assy.)

The quantities of each part that are required to complete the assembly. If quantity is (AR), it is understood that the quantity may vary when machine is equipped with certain options. Order quantity as needed.

Hardware

Standard screws, washers, nuts, etc. are not identified by a reference number. These parts are known as COMMON HARDWARE items and appear indented under the major items with which they are used. They should be ordered separately as listed, since they are not component parts of the pieces they attach to.

How To Order Repair Parts

1. Address all orders to your local SKYJACK dealer.
2. Specify model and serial number of the work platform (found on the serial number plate).
3. List the quantity needed.
4. List the length needed (if bulk item).
5. List the part number and description as shown in this manual for each item.
6. Show billing and shipping address and name of individual if possible.
7. Suggest best routing.

CUSTOMER _____

DEALER _____

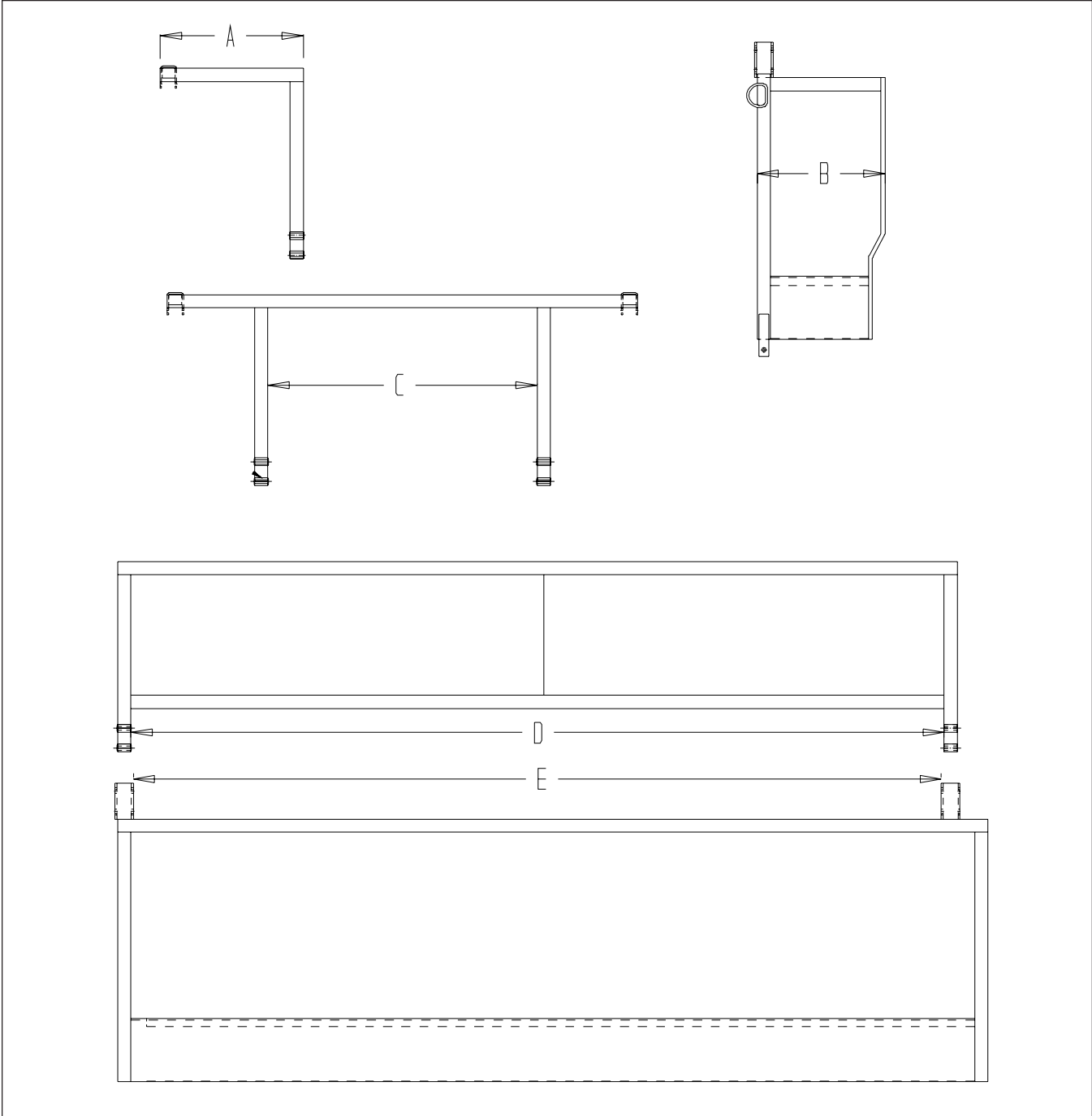
MODEL NUMBER _____

SERIAL NUMBER _____

DATE PURCHASED _____

Use Only Skyjack Authorized Replacement Parts!

RAILING MEASUREMENTS GUIDE



Index No.	Description
A	When measuring the Entry Top Side Rails, measure from end to end. (Machines with full gates.)
B	When measuring the Entry Bottom Side Rails, measure the overall width.
C	When measuring the Entry Top Rail, measure the inside dimension between vertical. (Machines with chain entrances or machines with half gates.)
D	When measuring hinged rails measure the distance between hinges.
E	When measuring hinged rails measure the distance between hinges.

TABLE OF CONTENTS

PLATFORM AND RELATED PARTS

FIGURE 6.1-1	MAIN PLATFORM ASSEMBLY	4
FIGURE 6.1-2	ROLL OUT PLATFORM ASSEMBLY	8
FIGURE 6.1-3	POWER DECK CYLINDER ASSEMBLY	12
FIGURE 6.1-4	POWER DECK CONTROL BOX ASSEMBLY	13
FIGURE 6.1-5	CRANK OUT PLATFORM ASSEMBLY	14
FIGURE 6.1-6	CONTROLL BOX ASSEMBLY	18
FIGURE 6.1-7	SKYJACK CONTROLLER ASSEMBLY	22
FIGURE 6.1-8	PQ CONTROLLER ASSEMBLY	23
FIGURE 6.1-9	OEM CONTROLLER ASSEMBLY	24

SCISSORS AND RELATED PARTS

FIGURE 6.2-1	SCISSORS STACK ASSEMBLY	26
FIGURE 6.2-2	LIFT CYLINDER ASSEMBLY	30

BASE AND RELATED PARTS

FIGURE 6.3-1	BASE ASSEMBLY	34
FIGURE 6.3-2	FRONT AXLE ASSEMBLY	40
FIGURE 6.3-3	REAR AXLE ASSEMBLY	44
FIGURE 6.3-4	STEER CYLINDER ASSEMBLY	48
FIGURE 6.3-5	BRAKE CYLINDER ASSEMBLY	49

ENGINE TRAY AND COMPONENTS

FIGURE 6.4-1	ENGINE TRAY ASSEMBLY	50
FIGURE 6.4-2	ENGINE ASSEMBLY	52
FIGURE 6.4-3	ELECTRICAL PANEL ASSEMBLY	54
FIGURE 6.4-4	MAIN MANIFOLD ASSEMBLY	56

FUEL TRAY AND COMPONENTS

FIGURE 6.5-1	FUEL TRAY ASSEMBLY	58
--------------	--------------------------	----

OUTRIGGERS

FIGURE 6.6-1	OUTRIGGERS, TUBE MOUNTED	60
FIGURE 6.6-2	OUTRIGGERS, BOLT ON TYPE	61

Figure 6.1-1. Main Platform Assembly

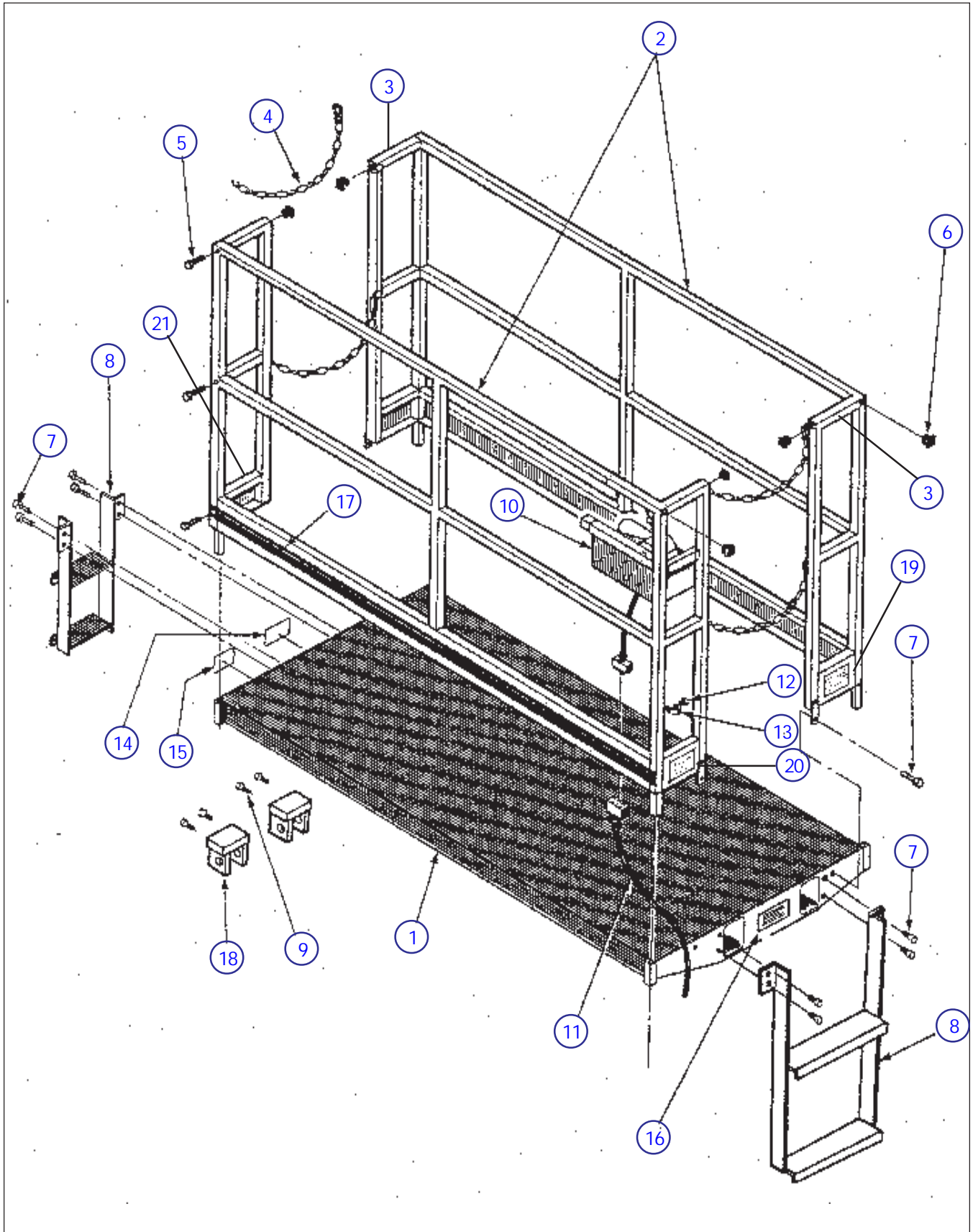


Figure 6.1-1. Main Platform Assembly

Index No.	Skyjack Part No.	Qty.	Description	
1	100233	1	MAIN PLATFORM, SJ105-10 to SJ105.8-10, SJ109-15-10, SJ109-17-10	
	100215	1	MAIN PLATFORM, SJ106-10 to SJ106.8-10	
	100222	1	MAIN PLATFORM, SJ106-13 to SJ106.8-13, SJ106-15 to SJ107-15	
	100380	1	MAIN PLATFORM, SJ109-15-13, SJ109-17-13	
	106477	1	MAIN PLATFORM, SJ105-10 to SJ105.8-10, SJ109-15-10, SJ109-17-10 c/w 3' Power Deck	
	128031	1	MAIN PLATFORM, SJ106-10 to SJ106.8-10 c/w 3' Power Deck	
	128032	1	MAIN PLATFORM, SJ106-13 to SJ106.8-13, SJ106-15 to SJ107-15 c/w 3' Power Deck	
	128033	1	MAIN PLATFORM, SJ109-15-13, SJ109-17-13 c/w 3' Power Deck	
	128036	1	MAIN PLATFORM, SJ105-10 to SJ105.8-10, SJ109-15-10, SJ109-17-10 c/w 5' Power Deck	
	105751	1	MAIN PLATFORM, SJ106-10 to SJ106.8-10 c/w 5' Power Deck	
	105752	1	MAIN PLATFORM, SJ106-13 to SJ106.8-13, SJ106-15 to SJ107-15 c/w 5' Power Deck	
	128037	1	MAIN PLATFORM, SJ109-15-13, SJ109-17-13 c/w 5' Power Deck	
	2	100871	1	SIDE RAILING LH, Solid Replaces 100530 (May Also Require Item #3)
		100735	1	SIDE RAILING LH, Hinged (May Also Require Item #3)
100867		1	SIDE RAILING RH, Solid Replaces 100522 (May Also Require Item #3)	
100728		1	SIDE RAILING RH, Hinged (May Also Require Item #3)	
3		100540	1	END RAIL LH, Solid SJ10X-10 Models
	100541	1	END RAIL LH, Solid SJ10X-13 and SJ10X-15 Models	
	100738	1	END RAIL LH, Hinged SJ10X-10 Models	
	100739	1	END RAIL LH, Hinged SJ10X-13 and SJ10X-15 Models	
	100559	1	END RAIL RH, Solid SJ10X-10 Models	
	100560	1	END RAIL RH, Solid SJ10X-13 and SJ10X-15 Models	
	100749	1	END RAIL RH, Hinged SJ10X-10 Models	
	100750	1	END RAIL RH, Hinged SJ10X-13 and SJ10X-15 Models	
	4	103357	4	ENTRY CHAIN, Standard Width Entry
	5	103862	8	HEX HD BOLT, 1/4"-20 X 2.250"
104000		8	LOCK WASHER, 1/4"	
103995		8	FLAT WASHER, 1/4" SAE	
103980		8	NUT, 1/4"-20	
101778		8	RAIL CLAMP	
6		100702	8	END CAP, 1 1/4" X 1 1/4"
7	103473	4	HEX HD BOLT, 3/8"-16 X 1"	
	103472	8	FLAT WASHER, 3/8" SAE	
	103999	4	LOCK WASHER, 3/8"	
	103978	4	NUT, 3/8"-16	
8	106732	2	LADDER PLATFORM MOUNTED	
9	103473	4	HEX HD BOLT, 3/8"-16 X .750"	
	103472	8	FLAT WASHER, 3/8" SAE	
	103999	4	LOCK WASHER, 3/8"	
10	(Ref)		CONTROL BOX ASSEMBLY, (See Control Box Parts List Figure 6.1-6)	

Parts list continued on the following page.

Figure 6.1-1. Main Platform Assembly (Continued)

Index No.	Skyjack Part No.	Qty.	Description
			Parts list continued from the previous page.
11	(Ref)	1	CONTROL CABLE, Three Scissors Machines 33.5'
	102887	AR/ft	• CABLE, 16/15
	102783	1	• PLUG, Male 12 Pin
	102515	1	• PLUG, Female 12 Pin
	(Ref)	1	CONTROL CABLE, Four Scissors Machines 39.5'
	102887	AR/ft	• CABLE, 16/15
	102783	1	• PLUG, Male 12 Pin
	102515	1	• PLUG, Female 12 Pin
	(Ref)	1	CONTROL CABLE, Five Scissors Machines 46'
	102887	AR/ft	• CABLE, 16/15
	102783	1	• PLUG, Male 12 Pin
	102515	1	• PLUG, Female 12 Pin
			If Replacing With Cables Below May Also Have To Replace Opposing Connector Ends On Existing Cables.
	107823	1	CONTROL CABLE, Three Scissors Machines 33.5'
	107816	1	CONTROL CABLE, Four Scissors Machines 39.5'
	(Ref)	1	CONTROL CABLE, Five Scissors Machines 46'
	102887	AR/ft	• CABLE, 16/15
	103564	1	• HOUSING, Female Casting
	700555	1	• INSERT, Female 16 Pin
	103565	1	• HOUSING, Male Casting
	103574	1	• INSERT, Male 16 Pin
12	103632	1	HEX HD SELF TAPPING BOLT, 1/4"-14 X .750"
13	102929	1	CLAMP, #10 Single
14	103269	2	LABEL, Main Platform Capacity 750# (See Specification Table Section 5)
	122932	2	LABEL, Main Platform Capacity 800# (See Specification Table Section 5)
	*(CS)	2	LABEL, Main Platform Capacity 900# (See Specification Table Section 5)
	106505	2	LABEL, Main Platform Capacity 1000# (See Specification Table Section 5)
	103275	1	LABEL, Auxillary Platform Capacity 250# (See Specification Table Section 5)
15	102661	2	LABEL, Warning Electrocution Hazard
16	108665	2	LABEL, Compliance
17	103125	AR/rl	LABEL, Stripe Blue/White
18	100211	2	PLATFORM MOUNTING BRACKET
19	109985	1	LABEL, 13 Month Inspection
20	106691	1	LABEL, Operator Checklist
21	106693	1	LABEL, Filled Tires (If Equipped)
	*(CS)		NOTE: Please Consult Factory and Provide Model and Serial Numbers

Figure 6.1-2. Telescoping Platform Assembly

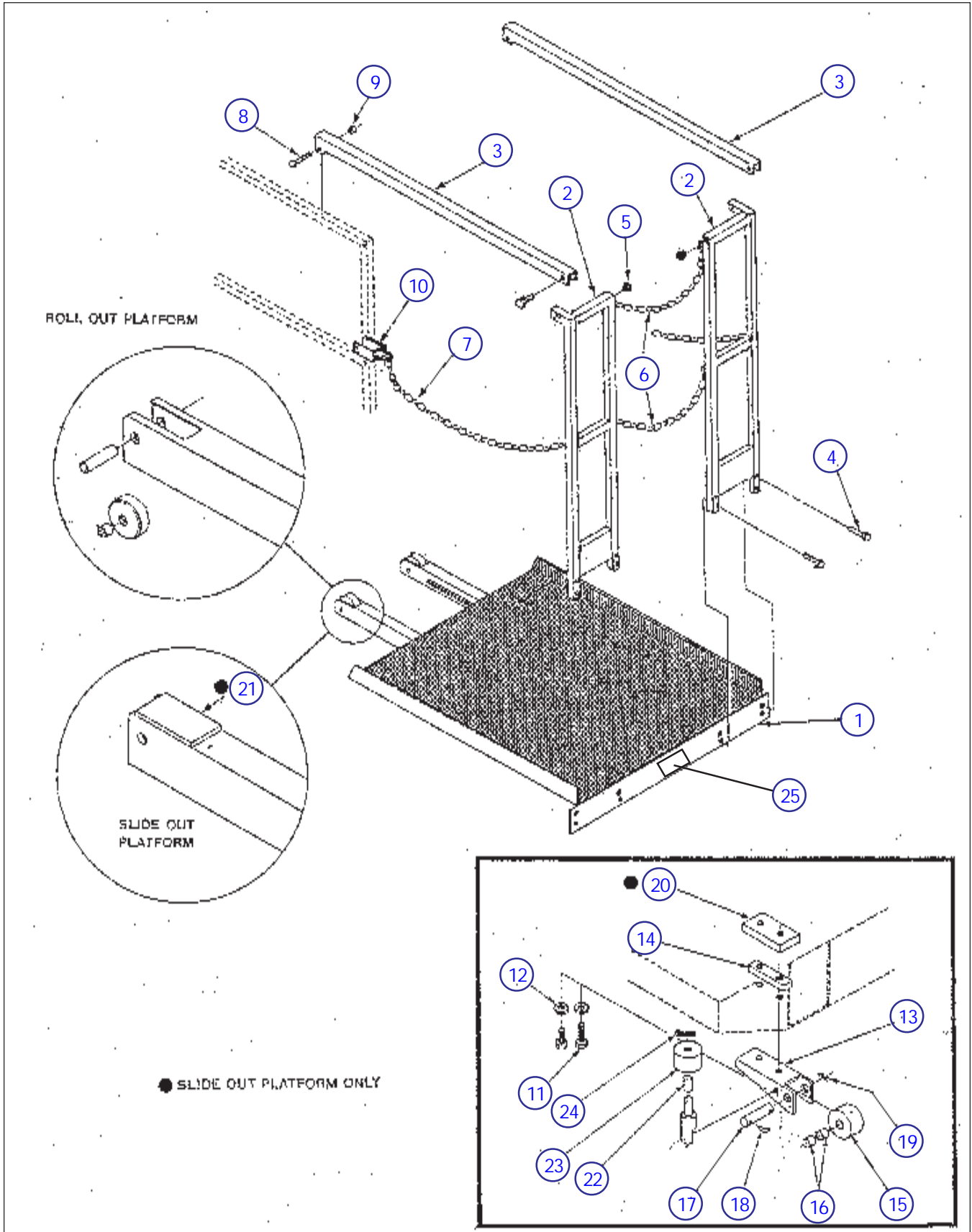


Figure 6.1-2. Telescoping Platform Assembly

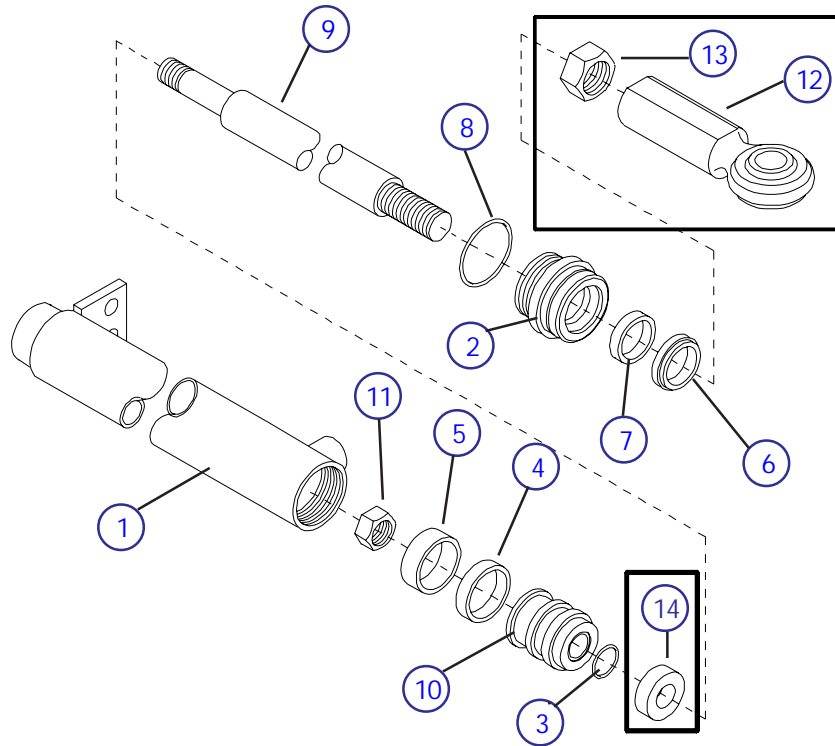
Index No.	Skyjack Part No.	Qty.	Description
1	105803	1	ROLL OUT PLATFORM, All SJ10X-10 Models
	105804	1	ROLL OUT PLATFORM, All SJ10X-13 and SJ10X-15 Models
	106480	1	POWER DECK PLATFORM, 3' All SJ10X-10 Models
	106482	1	POWER DECK PLATFORM, 3' All SJ10X-13 and SJ10X-15 Models
	103423	1	POWER DECK PLATFORM, 5' All SJ10X-10 Models
	105354	1	POWER DECK PLATFORM, 5' All SJ10X-13 and SJ10X-15 Models
2	128039	1	END RAIL, LH SJ10X-10 Models
	128040	1	END RAIL, LH SJ10X-13 Models and SJ10X-15 Models
	128042	1	END RAIL, RH SJ10X-10 Models
	128043	1	END RAIL, RH SJ10X-13 Models and SJ10X-15 Models
	100494	1	END RAIL, Solid Mid Chain SJ10X-10 Models
	100497	1	END RAIL, Solid Mid Chain SJ10X-13 and SJ10X-15 Models
	100762	1	END RAIL, Hinged Mid Chain SJ10X-10 Models
	100763	1	END RAIL, Hinged Mid Chain SJ10X-13 and SJ10X-15 Models
	100872	1	END RAIL, Solid Mid Pipe SJ10X-10 Models
	105699	1	END RAIL, Hinged Mid Pipe SJ10X-10 Models
	105700	1	END RAIL, Hinged Mid Pipe SJ10X-13 and SJ10X-15 Models
3	100142	2	EXTENSION RAILING, 3'
	107454	2	EXTENSION RAILING, 5'
	103550	6	PAD, Wear
4	103596	8	HEX HD BOLT, 3/8"-16 X 2"
	103472	16	FLAT WASHER, 3/8" SAE
	103999	8	LOCK WASHER, 3/8"
	103978	8	NUT, 3/8'-16
	103473	4	HEX HD BOLT, 3/8"-16 X 1"
	103472	4	FLAT WASHER, 3/8" SAE
	103999	4	LOCK WASHER, 3/8"
	100484	2	RAILING MOUNT PLATE
5	100702	2	END CAP, 1 1/4" X 1 1/4"
6	103357	2	CHAIN, Entry
7	103497	2	CHAIN, Side Protection
8	103865	4	HEX HD BOLT, 5/16"-18 X 2"
9	103984	4	NYLON LOCK NUT, 5/16"-18
10	100293	3	BRACKET, Chian Connector
11	103911	4	HEX HD BOLT, 1/2"-13 X 1"
12	103470	4	LOCK WASHER, 1/2"
13	100355	1	BRACKET, LH
	100357	1	BRACKET, RH
14	100143	2	BRACKET, Stop Plate
15	100141	2	ROLLER
16	100050	4	BUSHINGS, 3/4"ID X 1"
17	100046	2	PIN
18	100121	2	PIN, L
19	103478	2	COTTER PIN, 1/4" Dia. X 1.25"
20	125951	2	SLIDE BLOCK
21	125952	2	SLIDE PAD
22	NA	-	NOT REQUIRED WITH ROLLER ITEM 23
23	107579	2	GUIDE ROLLER
24	122071	2	COTTER PIN, 1/8" Dia. X 2"

Parts list continued on the following page.

Figure 6.1-2. Telescoping Platform Assembly (Continued)

Index No.	Skyjack Part No.	Qty.	Description
25	103275	1	<p>Parts list continued from the previous page.</p> <p>LABEL, Auxillary Platform Capacity 250# (See Specification Table Section 5)</p>
	120259	2	POWER DECK CYLINDER, 3' (Not Shown) (Ref Parts List Figure 6.1-3)
	120255	2	POWER DECK CYLINDER, 5' (Not Shown) (Ref Parts List Figure 6.1-3)
	115592	1	POWER DECK CONTROL BOX, (Not Shown) (Ref Parts List Figure 6.1-4)

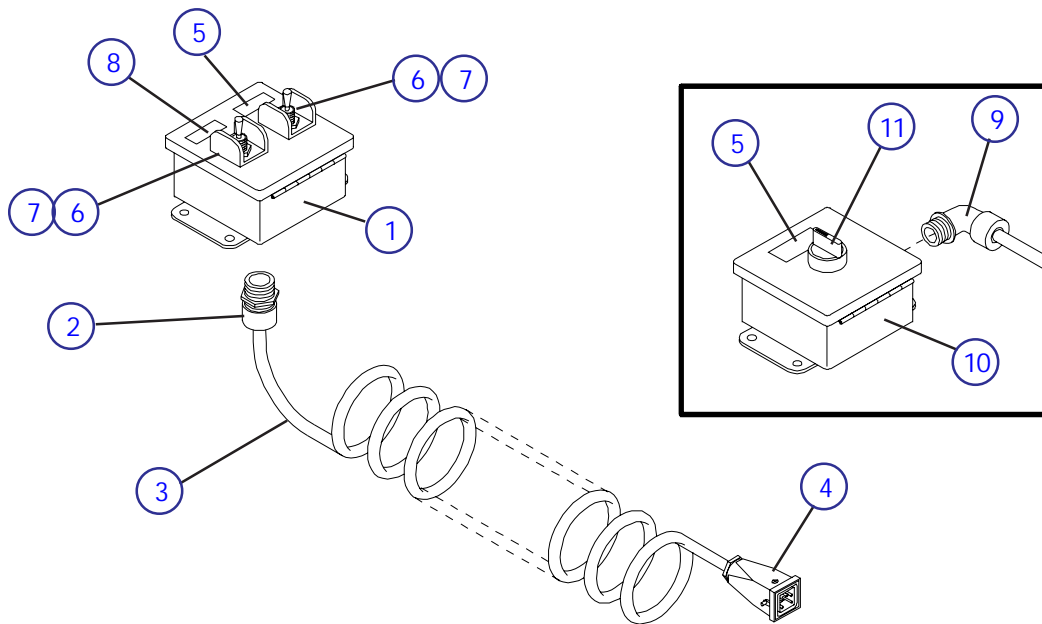
Figure 6.1-3. Powered Extension Platform Cylinder Assembly



Index No.	Skyjack Part No.	Qty.	Description
A	120259	2	CYLINDER ASSEMBLY, 3 Ft. extension platform
B	120255	2	CYLINDER ASSEMBLY, 5 Ft. extension platform
1	120257	1	• WELDMENT, Cylinder barrel (3' extension platform), A
	120249	1	• WELDMENT, Cylinder barrel (5' extension platform), B
2	120254	1	• GLAND, Cylinder end
*3	110976	1	• O-RING, Piston
*4	103825	1	• SEAL, Piston
*5	106452	1	• RING, Piston wear
*6	106449	1	• WIPER, Rod
*7	108798	1	• SEAL, Rod
*8	120436	1	• O-RING, Gland
9	117970	1	• ROD, Piston (3' extension platform), A
	117927	1	• ROD, Piston (5' extension platform), B
10	117942	1	• PISTON, Cylinder
11	103830	1	• NUT, Lock 5/8-11 grade C
12	103420	1	END, Spherical Bearing
13	106450	1	NUT, Jam 3/4"-16
14	103822	1	SPACER, Used on Old Piston PT# 106457 Only
-	103424	2	PIN, Cylinder Mount (Not Shown)
-	100759	4	RETAINING RING, (Not Shown)
-	100819	4	FLAT WASHER, 3/4" Dia Nom
	107396	1	KIT, Seal repair, * - Part of Seal Repair Kit, 107396

NOTE, If Replacing Older Cylinder Component Item Must Replace Cylinder

Figure 6.1-4. Powered Extension Platform Control Box Assembly



MA-SJII-31B

Index No.	Skyjack Part No.	Qty.	Description
A	115592	1	POWERDECK CONTROL BOX ASSEMBLY, (Toggle Switch Controls)
B	N/A		POWERDECK CONTROL BOX ASSEMBLY, (Rotary Switch Controls)
1	115539	1	• BOX, Control, A
2	103041	1	• STRAIN RELIEF, Straight 1/2" , A
3	106401	1	• CORD, Coiled 18/3
4	107712	1	• CONNECTOR ASSEMBLY, Male
	103567	-	• • HOUSING
	103569	-	• • MALE INSERT, 4 Pin + Grnd
	107711	1	(When Replacing Round Connector Also Order Connector PT# 107711)
	103568	-	• • CONNECTOR ASSEMBLY, Female
	103570	-	• • HOUSING c/w LATCH
	103570	-	• • FEMALE INSERT, 4 Pin + Grnd
5	108328	1	• LABEL, Platform extend/retract
6	102853	2	• SWITCH, Toggle, A
7	111181	2	• GUARD, Toggle switch, A
8	115594	1	• LABEL, Enable, A
9	103035	1	• STRAIN RELIEF, Elbow 90° 1/2" , B
10	102976	1	• BOX, Control, B
11	(Ref.)	1	• SWITCH ASSEMBLY, Platform extend/retract, B
	102837	1	• • HEAD, Selector switch
	103100	1	• • BASE, Contact
	103141	1	• • BLOCK, N.O. Contact
11	(Ref.)	1	• SWITCH ASSEMBLY, Enable (If Equipped), B
	102837	1	• • HEAD, Push Button Green
	103100	1	• • BASE, Contact
	103141	1	• • BLOCK, N.O. Contact
	117188	1	POWER DECK CONTROL BOX MOUNTING BRACKET, (Not Shown)

Figure 6.1-5. Crank-out Platform Assembly

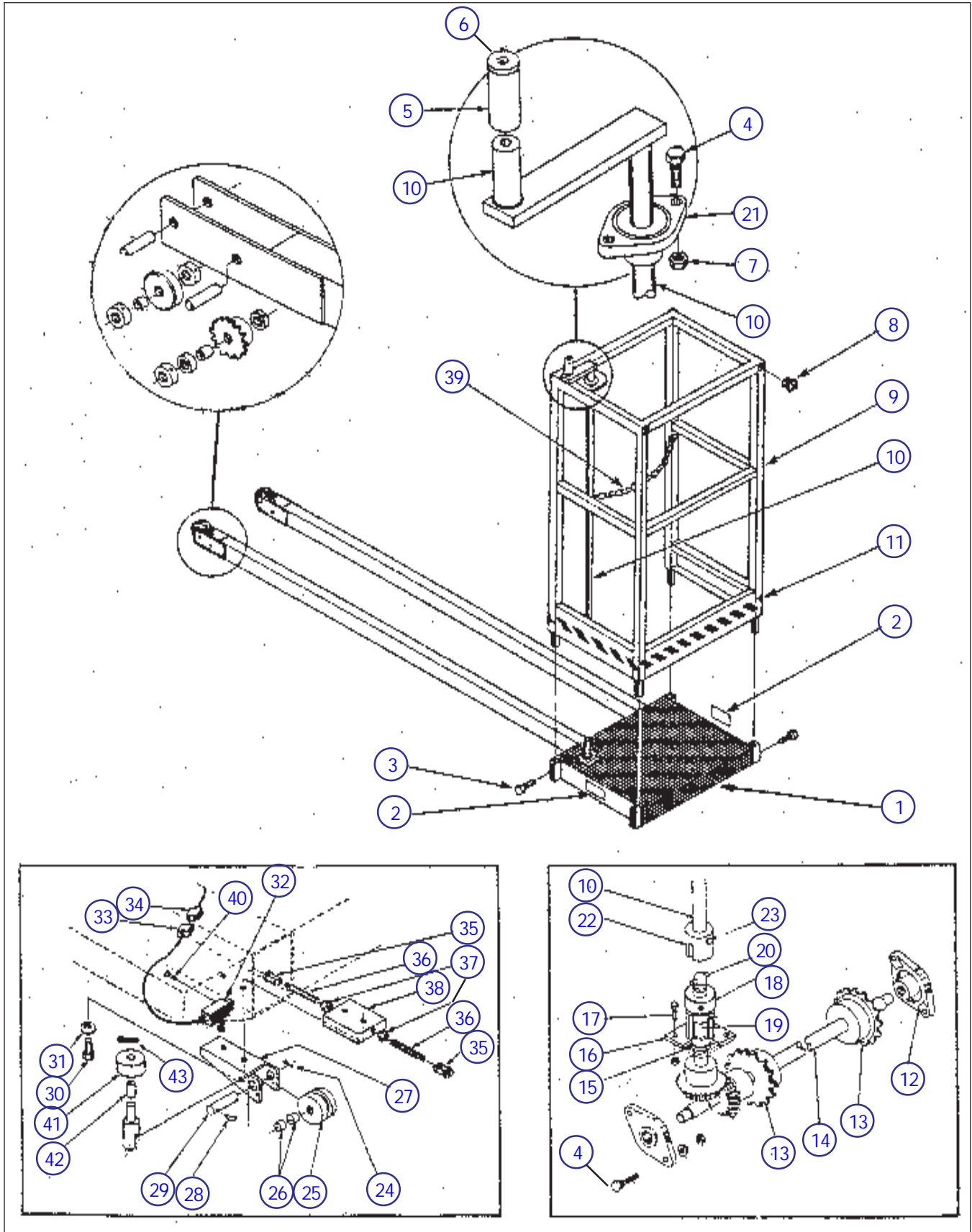


Figure 6.1-5. Crank-out Platform Assembly

Index No.	Skyjack Part No.	Qty.	Description
1	100152	1	CRANK OUT PLATFORM, 6ft
	100682	1	CRANK OUT PLATFORM, 8ft
2	103275	1	LABEL, Auxillary Platform Capacity 250# (See Specification Table Section 5)
3	103473	4	HEX HD BOLT, 3/8"-16 X 1
	103999	4	LOCK WASHER, 3/8"
4	103857	2	HEX HD BOLT, 1/4"-20 X 1"
5	100761	1	CRANK HANDLE
6	100760	1	WASHER
	100759	1	SNAP RING
7	103980	2	NUT, 1/4"-20
	104000	2	LOCK WASHER, 1/4"
8	100702	4	END CAP, 1 1/4" X 1 1/4"
9	100010	1	RAILING, 6ft
	100688	1	RAILING, 8ft
10	100755	1	CRANK and SHAFT
11	102975	AR/rl	LABEL, Caution Stripe
12	103350	2	BEARING, 5/8" Dia. Bearing
	100398	2	BEARING, 3/4" Dia. Bearing
13	103238	2	SPROCKET, 3/4"ID
14	N/A	1	SHAFT, 5/8" Dia Bearing Surface
	100396	1	SHAFT, 3/4" Dia Bearing Surface
15	100391	2	BUSHING
16	100388	1	HOUSING
17	103857	2	HEX HD BOLT. 1/4"-20 X 1"
	103980	2	NUT, 1/4"-20
18	300278	1	COLLAR, 3/4"ID
19	100392	1	PINION SHAFT
20	100395	2	ROLL PIN, 1/4" Dia. X 1.375"
21	100398	1	BEARING, 3/4" Dia.
22	100151	1	COUPLING SLEEVE
23	100150	1	SPRING PIN, 3/16" Dia X 1.250"
24	103478	2	COTTER PIN, 1/4" Dia. X 1.250"
25	100354	2	ROLLER, Grooved
26	100050	4	BUSHING, 3/4"ID X 1"
27	100355	1	BRACKET, LH
	100357	1	BRACKET, RH
28	100121	2	PIN, L
29	100046	2	PIN, Wheel
30	103911	4	HEX HD BOLT. 1/2"-13 X 1"
31	103470	4	LOCK WASHER, 1/2"
32	(Ref)	1	LIMIT SWITCH, Cutout
	102847	1	• LIMIT SWITCH BODY
	102882	1	• HEAD, Arm
	103224	1	• ACTUATOR, Lever c/w Roller
	103036	1	• STRAIN RELIEF

Parts list continued on the following page.

Figure 6.1-5. Crank-out Platform Assembly (Continued)

Index No.	Skyjack Part No.	Qty.	Description
Parts list continued from the previous page.			
33	103256 107712 103567 103569	AR/ft 1 1 1	CABLE 18/2, Limit Switch to Plug PLUG, Male • HOUSING • INSERT, Male 4 Pin + grd (When Replacing Old Style Connector Also Order Connector PT# 107711)
34	103256 107711 103568 103570	AR/ft 1 1 1	CABLE 18/2, Plug to Control Box PLUG, Female • HOUSING, c/w Latch • INSERT, Female 4 Pin + grd (When Replacing Old Style Connector Also Order Connector PT# 107712)
35	103692 102514	AR/ft 4	CHAIN, #35 MASTER LINK, #35
36	106304 106305	2 2	CHAIN TENSIONER, LH Thread CHAIN TENSIONER, RH Thread
37	103978 128029	2 2	NUT, 3/8"-16 RH NUT, 3/8"-16 LH
38	100000	2	BLOCK, Chain Tensioning
39	103798	1	CHAIN, Entry
40	103963	2	MACHINE SCREW, #10-32 X 1.5"
41	107579	2	GUIDE ROLLER
42	NA	-	NOT REQUIRED WITH ROLLER ITEM 41
43	122071	2	COTTER PIN, 1/8" Dia. X 2"

Figure 6.1-6. Control Box Assembly

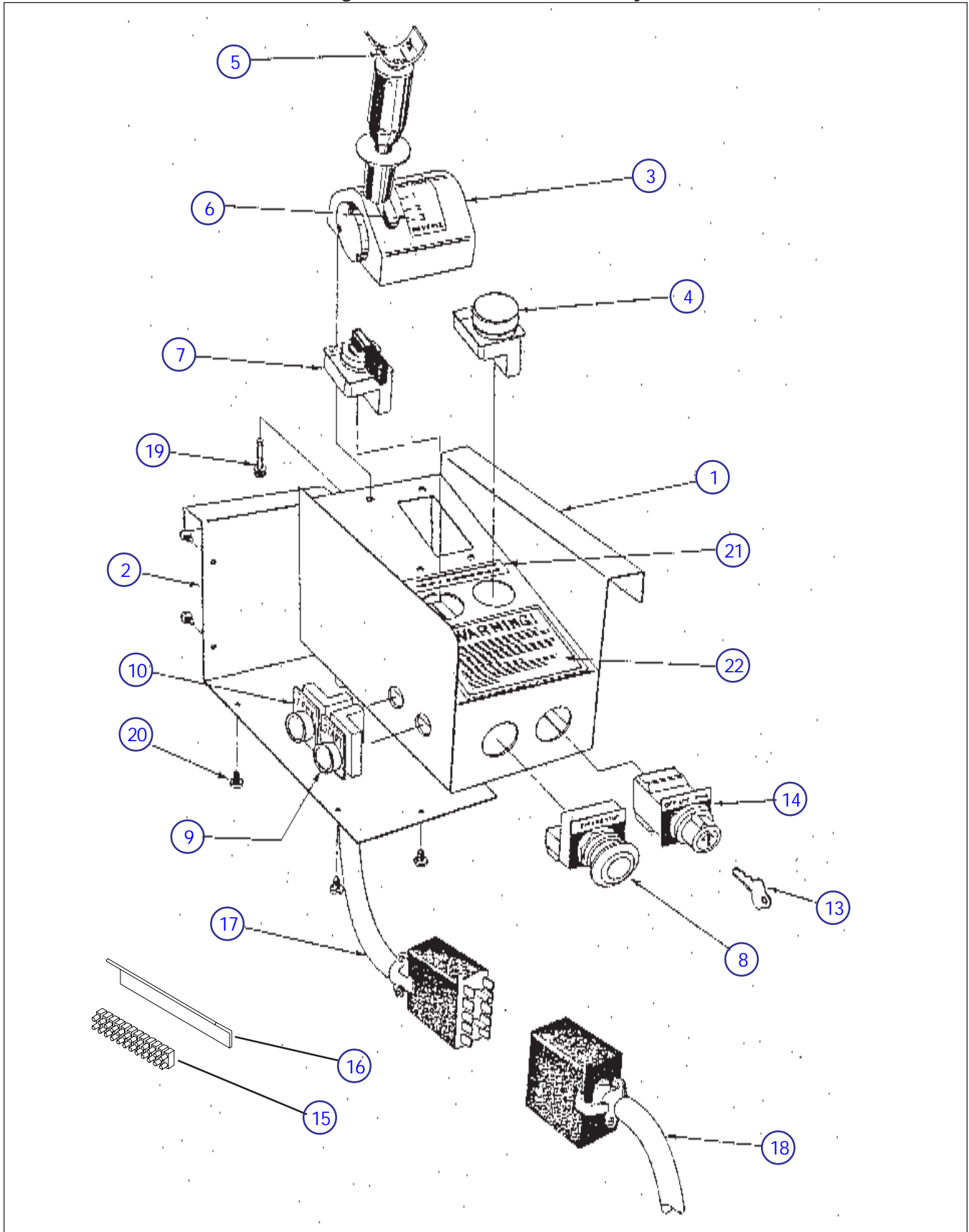


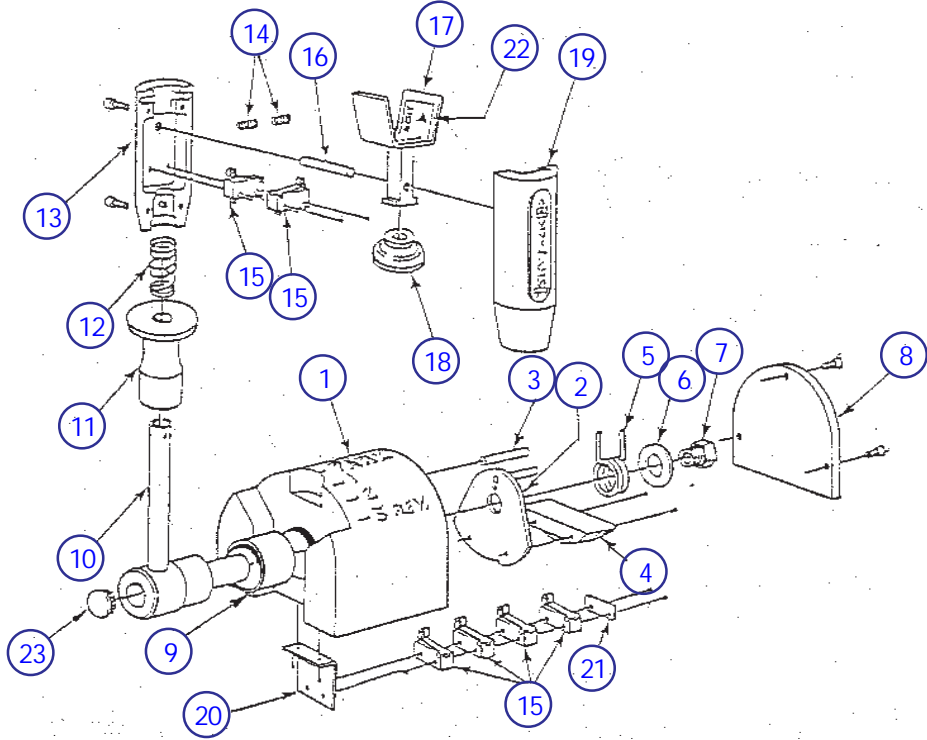
Figure 6.1-6. Control Box Assembly

Index No.	Skyjack Part No.	Qty.	Description
A	104291	1	CONTROL BOX ASSEMBLY (ANSI/SIA & CSA)
1	110065	1	• WELDMENT, Control box
2	108703	1	• COVER, Control box bottom
	112327	10	• • SCREW, Self-tapping #8-18 x 1/2" lg.
3	(Ref.)	1	• CONTROLLER, Drive/steer (For Components, Refer to Figure 6.1-7)
	103957	4	• • SCREW, Machine #8-32 x 1/2"
	112249	4	• • WASHER, Lock #8
4	(Ref.)	1	• LIGHT ASSEMBLY, Power indicator
	103202	1	• • LENS, Red
	102671	1	• • BASE, Indicator light
	103221	1	• • BULB, 12 Volt
	108331	1	• LABEL, On Indicator
5	102767	1	• LABEL, Steer
6	107191		• LABEL, Drive
7	(Ref.)	1	• SWITCH ASSEMBLY, Up/down selector
	102837	1	• • HEAD, Selector switch
	103100	1	• • BASE, Contact
	103141	1	• • BLOCK, N.O. Contact
	102657	1	• LABEL, Up/Off/Down
8	(Ref.)	1	• SWITCH ASSEMBLY, Emergency stop
	100149	1	• • WASHER, Flat
	102769	1	• • HEAD, Stop switch
	103100	1	• • BASE, Contact
	103225	1	• • BLOCK, N.C. Contact
	102627	1	• LABEL, Emergency Stop
9	(Ref.)	1	• SWITCH ASSEMBLY, Start push-button
	102851	1	• • HEAD, Push-button switch
	103100	1	• • BASE, Contact
	103141	1	• • BLOCK, N.O. Contact
	108334	1	• LABEL, Start
10	(Ref.)	1	• SWITCH ASSEMBLY, Choke or Prime
	102851	1	• • HEAD, Push-button switch
	103100	1	• • BASE, Contact
	103141	1	• • BLOCK, N.O. Contact
	103060	1	• LABEL, Choke
	103201	1	• LABEL, Prime
11	(Ref.)	1	• SWITCH ASSEMBLY, Enable push-button (If Equipped)(Not Shown)
	108854	1	• • HEAD, Push-button switch (green)
	103100	1	• • BASE, Contact
	103141	2	• • BLOCK, N.O. Contact
	108855		• LABEL, Lift Enable
12	102956	AR	• PLUG, 7/8" Hole
13	104325	1	• KEY, Select Switch
14	(Ref.)	1	• SWITCH ASSEMBLY, Key select
	102753	1	• • HEAD, 3-Position key select
	103100	1	• • BASE, Contact
	103141	1	• • BLOCK, N.O. Contact
	103225	1	• • BLOCK, N.C. Contact
	108335	1	• LABEL, Off/Lift/Drive
			Parts list continued on the following page

Figure 6.1-6. Control Box Assembly (Continued)

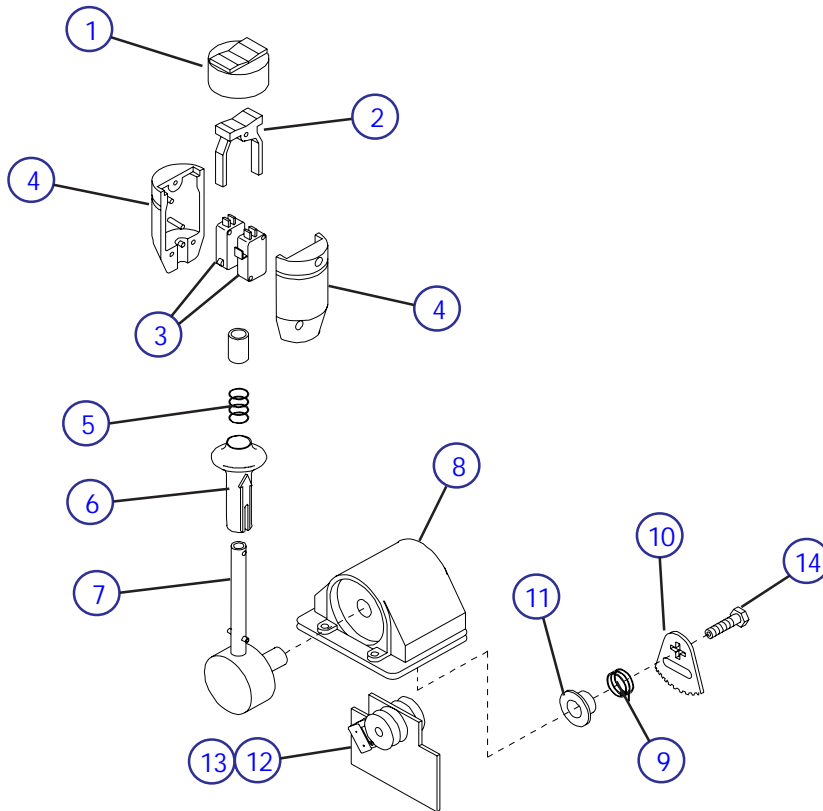
Index No.	Skyjack Part No.	Qty.	Description
			Parts list continued from the previous page.
15	103012	1.5	• STRIP, Terminal block
	103955	6	• • SCREW, Machine #6-32 x 3/4" lg.
	103985	6	• • NUT, Machine #6-32
16	113451	1	• BRACKET, Terminal block mount
17	(Ref)	1	CORD ASSEMBLY,
	102887	AR/ft	• CABLE, 16/15
	102783	1	• PLUG, Male 12 Pin
			If Replacing With Cable Below May Also Have To Replace Opposing Connector End On Existing Cable.
	107855	1	CORD ASSEMBLY,
	102887	AR/ft	• CABLE, 16/15
	103565	1	• HOUSING, Male Casting
	103574	1	• INSERT, Male 16 Pin
	103041	1	• STRAIN RELIEF, Straight 1/2"
18	(Ref)	1	CONTROL CABLE, Three Scissors Machines 33.5'
	102887	AR/ft	• CABLE, 16/15
	102783	1	• PLUG, Male 12 Pin
	102515	1	• PLUG, Female 12 Pin
	(Ref)	1	CONTROL CABLE, Four Scissors Machines 39.5'
	102887	AR/ft	• CABLE, 16/15
	102783	1	• PLUG, Male 12 Pin
	102515	1	• PLUG, Female 12 Pin
	(Ref)	1	CONTROL CABLE, Five Scissors Machines 46'
	102887	AR/ft	• CABLE, 16/15
	102783	1	• PLUG, Male 12 Pin
	102515	1	• PLUG, Female 12 Pin
			If Replacing With Cables Below May Also Have To Replace Opposing Connector Ends On Existing Cables.
	107823	1	CONTROL CABLE, Three Scissors Machines 33.5'
	107816	1	CONTROL CABLE, Four Scissors Machines 39.5'
	(Ref)	1	CONTROL CABLE, Five Scissors Machines 46'
	102887	AR/ft	• CABLE, 16/15
	103564	1	• HOUSING, Female Casting
	700555	1	• INSERT, Female 16 Pin
	103565	1	• HOUSING, Male Casting
	103574	1	• INSERT, Male 16 Pin
19	103957	4	• • SCREW, Machine #8-32 x 1/2" lg.
20	112327	10	• • SCREW, Self-tapping #8-18 x 1/2" lg.
21	NA	1	• LABEL, Information Included on Item #22
22	106704	1	• LABEL, Warning
	(Ref.)	1	SWITCH ASSEMBLY, Horn push-button (Not Shown)
	102851	1	• HEAD, Push-button switch
	103100	1	• BASE, Contact
	103141	1	• BLOCK, N.O. Contact
	102467	1	• LABEL, Horn

Figure 6.1-7, Skyjack Controller



Index No.	Skyjack Part No.	Qty.	Description
	N/A	-	CONTROLLER ASSEMBLY
1	101692	1	• JOYSTICK HOUSING
2	100128	1	• CAM PLATE, with Pin
3	100126	1	• PIN
4	100369	1	• CAM BLOCK
5	100133	1	• TORSION SPRING
6	100135	1	• WASHER
7	100136	1	• BOLT, Modified
8	100370	1	• HOUSING COVER
9	102890	1	• BUSHING
10	104316	1	• SHAFT AND STEM
11	100368	1	• LOCK SLEEVE
12	100137	1	• SPRING, for Lock Sleeve
13	100122	1	• HANDLE HALF, Drilled
14	102777	2	• SPRING, Steer Switch
15	102768	6	• MICROSWITCH
16	100126	1	• PIN
17	100123	1	• STEER SWITCH
18	103180	1	• HANDLE SEAL
19	100127	1	• HANDLE HALF, Tapped
20	100131	1	• SWITCH BRACKET
21	100134	1	• SWITCH CLAMP PLATE
22	102676	1	• LABEL, Steer
23	103019	1	• HOLE PLUG

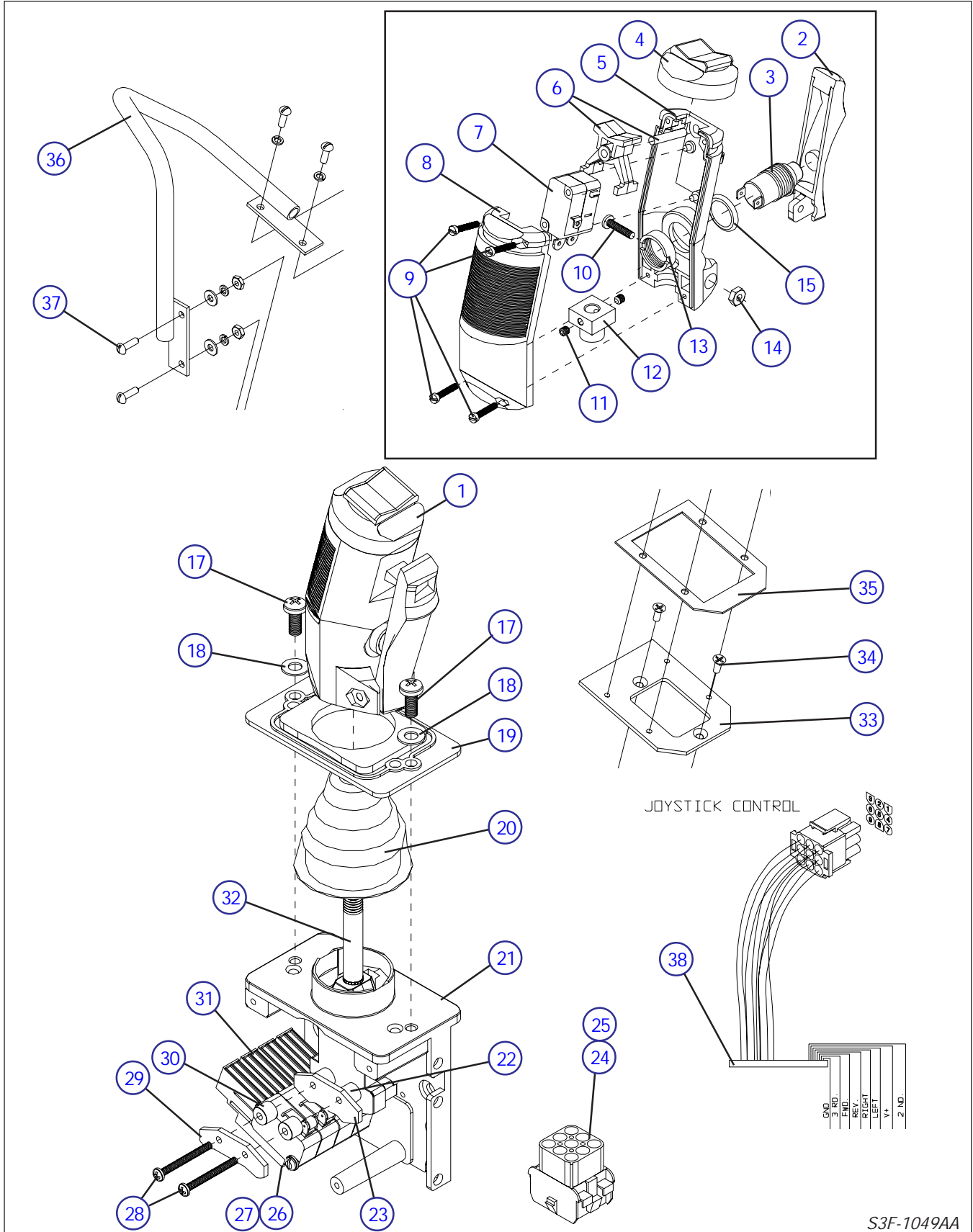
Figure 6.1-8, PQ Controller Assembly



MA-SJM-13

Index No.	Skyjack Part No.	Units per Assy.	Description
	103334	1	CONTROLLER ASSEMBLY
1	105735	1	• CAP, Elastic
2	105734	1	• ACTUATOR, Rocker
3	105733	2	• SWITCH, Directional
4	105738	2	• KNOB HALF
5	105737	1	• SPRING, Compression
6	105736	1	• SLIDE LOCK
7	105378	1	• HANDLE EXTENSION
8	106729	1	• HOUSING
9	106730	1	• SPRING, Handle return
10	106725	1	• RATCHET
11	106726	1	• BUSHING, Spring
12	106092	1	• CIRCUIT BOARD ASSEMBLY
13	102768	4	• SWITCH W/ACTUATOR
14	106731	1	• SCREW, Hollow

Figure 6.1-9, OEM Controller Assembly



S3F-1049AA

Figure 6.1-9, OEM Controller Assembly

Index No.	Skyjack Part No.	Qty.	Description
A	123995	-	CONTROLLER ASSEMBLY, Enable Joystick
1	122849	1	• HANDLE ASSEMBLY
2	122873	1	• • LEVER, Trigger
3	122872	1	• • SWITCH, Push button
4	122874	1	• • CAP, Rubber
5	122875	1	• • HANDLE, Front portion
6	122876	1	• • ROCKER ASSEMBLY
7	122877	2	• • SWITCH ASSEMBLY, Micro
8	122878	1	• • HANDLE, Back half
9	122879	4	• • SCREW, Joystick handle
10	122959	1	• • SCREW, Joystick lever
11	122960	2	• • SCREW, set
12	122961	1	• • COUPLING, 8mm
13	122962	1	• • COUPLING, 10mm
14	122963	1	• • NUT, Push button
15	122964	1	• • NUT, Joystick lever
16	122965	1	• • FITTING, O-Ring
17	122846	2	• SCREW
18	122847	2	• WASHER
19	122859	1	• GASKET
20	122848	1	• BOOT
21	122861	1	• BASE
22	122850	2	• SPACER
23	122862	1	• CAM
24	122840	1	• CONNECTOR ASSEMBLY, Male 9 pole
	116993	1	• • HOUSING, Connector Male 9 pole
	116990	9	• • PIN, Female wire
25	122841	1	• CONNECTOR ASSEMBLY, Female 9 pin
	122839	1	• • HOUSING, Connector Female 9 pin
	116989	9	• • PIN, Male wire
26	122870	2	• WASHER
27	122863	2	• SCREW
28	122866	2	• SCREW
29	122864	1	• CAM
30	122865	2	• SPACER
31	122869	4	• MICROSWITCH
32	124822	1	• SHAFT, Modified Joystick
33	124002	1	ADAPTOR, Joystick
34	124031	2	SCREW, Machine Flat Hd #10-32 X .625"
35	124029	1	GASKET, Joystick
36	124153	1	JOYSTICK GUARD
37	120094	6	BOLT, Machine #10-32 X .625"
	104185	6	WASHER, Lock #10 Nom.
	104694	2	WASHER, Flat #10 SAE
	104003	2	NUT, Machine #10-32
38	127222	1	MODULE, Spike Supression
	124080	1	LABEL, Enable joystick pictorial
	123488	1	LABEL, Operating instructions
			Refer to Section 5 OEM Joystick Installation Procedure for Joystick replacement Instructions.

Figure 6.2-1, Scissors Assembly

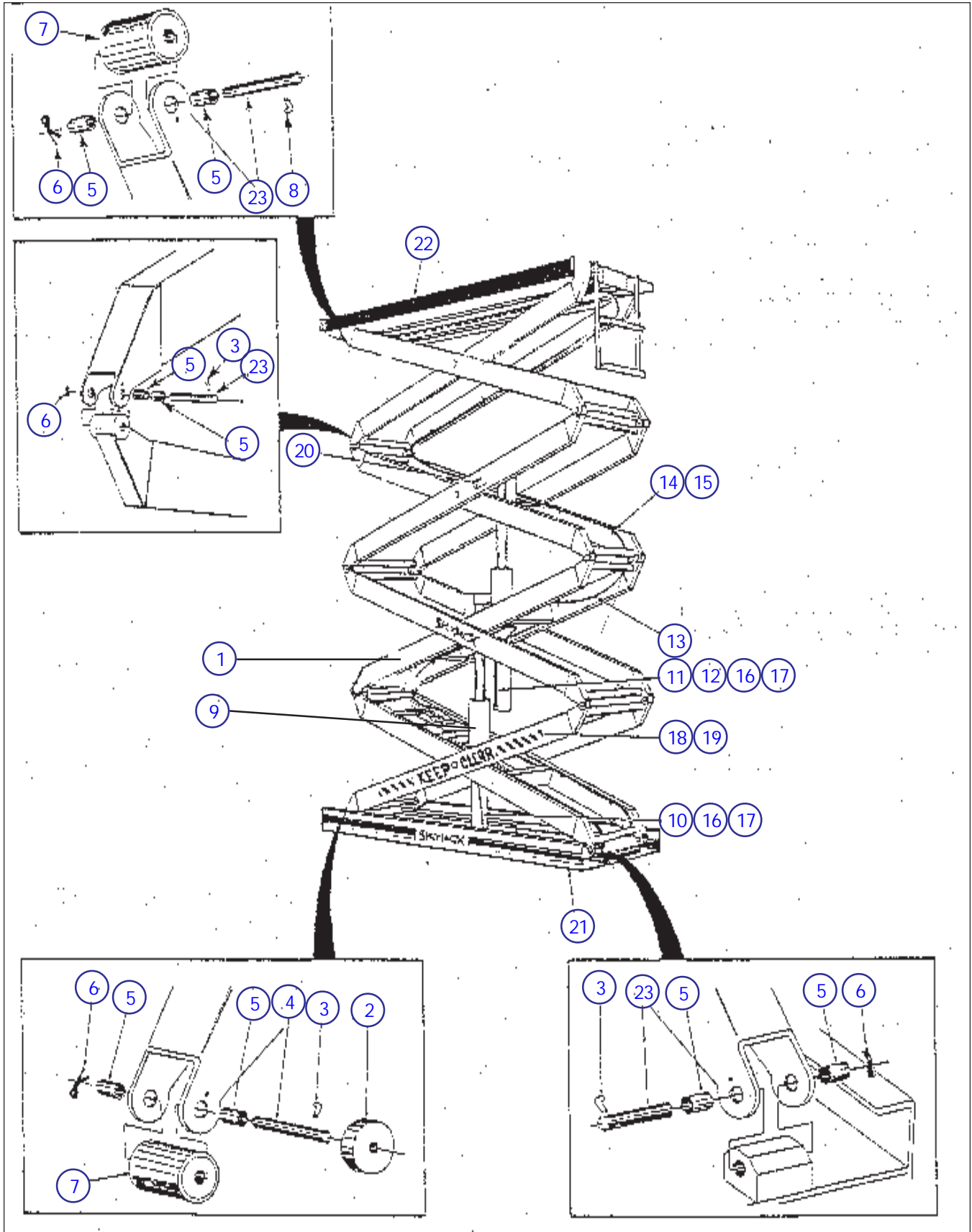


Figure 6.2-1, Scissors Assembly

Index No.	Skyjack Part No.	Qty.	Description
1	128011		STACK, SJ105-10
	128012		LEVEL 1
	128013		LEVEL 2
	128014		LEVEL 3
	128015		STACK, SJ105.5-10 to SJ105.8-10
	128016		LEVEL 1
	128017		LEVEL 2
	128014		LEVEL 3
	128018		STACK, SJ106-10 to SJ106.8-10, SJ106.5-13 to SJ106.8-13
	128016		LEVEL 1
	128019		LEVEL 2
	128020		LEVEL 3
	128021		LEVEL 4
	128022		STACK, SJ106-13, SJ106-15 to SJ107-15
	128012		LEVEL 1
	128013		LEVEL 2
	128020		LEVEL 3
	128021		LEVEL 4
	128023		STACK, SJ109-XX-XX
	128024		LEVEL 1
	128025		LEVEL 2
	128026		LEVEL 3
	128027		LEVEL 4
	128028		LEVEL 5
2	100139	2	RETAINING ROLLER
3	100121	AR	PIN, Long L
	100825	AR	PIN, Straight
4	100047	2	RETAINING ROLLER PIN
5	100050	AR	BUSHING, 3/4"ID X 1"
6	103478	AR	COTTER PIN, 1/4" X 1 1/4"
7	100048	4	SCISSORS ROLLER
8	100119	2	L PIN, Short
9	(Ref)	AR	LIFT CYLINDER ASSEMBLY (See Lift Cylinder Parts List Figure 6.2-2)
10	(Ref)	1	HOSE, Manifold to First Cylinder (Reference Hose List Section 5)
11	(Ref)	1	HOSE, Manifold to Second Cylinder (Reference Hose List Section 5)
12	(Ref)	1	HOSE, Manifold to Third Cylinder (Reference Hose List Section 5)
Parts list continued on the following page			

Figure 6.2-1, Scissors Assembly (Continued)

Index No.	Skyjack Part No.	Qty.	Description
Parts list continued from the previous page.			
13	(Ref)	1	CONTROL CABLE, Three Scissors Machines 33.5'
	102887	AR/ft	• CABLE, 16/15
	102783	1	• PLUG, Male 12 Pin
	102515	1	• PLUG, Female 12 Pin
	(Ref)	1	CONTROL CABLE, Four Scissors Machines 39.5'
	102887	AR/ft	• CABLE, 16/15
	102783	1	• PLUG, Male 12 Pin
	102515	1	• PLUG, Female 12 Pin
	(Ref)	1	CONTROL CABLE, Five Scissors Machines 46'
	102887	AR/ft	• CABLE, 16/15
	102783	1	• PLUG, Male 12 Pin
	102515	1	• PLUG, Female 12 Pin
	If Replacing With Cables Below May Also Have To Replace Opposing Connector Ends On Existing Cables.		
	107823	1	CONTROL CABLE, Three Scissors Machines 33.5'
	107816	1	CONTROL CABLE, Four Scissors Machines 39.5'
	(Ref)	1	CONTROL CABLE, Five Scissors Machines 46'
	102887	AR/ft	• CABLE, 16/15
	103564	1	• HOUSING, Female Casting
	700555	1	• INSERT, Female 16 Pin
	103565	1	• HOUSING, Male Casting
	103574	1	• INSERT, Male 16 Pin
14	102929	AR	CLIP, #10 Single
15	103962	AR	SCREW, Machine #10-32 X .5"
16	103024	AR	CLIP, #8 Single
	102972	AR	CLIP, #8 Double
	103078	AR	CLIP, #10 Double
17	103856	1 per	HEX HD BOLT, 1/4"-20 X .750"
	104000	1 per	LOCK WASHER, 1/4"
	103995	1 per	FLAT WASHER, 1/4"
18	102975	AR/roll	LABEL, Warning Stripe
19	106760	2	LABEL, Keep
	106761	2	LABEL, Clear
20	102894	2	LABEL, Do Not Lift
21	(Ref)	1	BASE ASSEMBLY, (See Base Assembly Parts List Figure 6.3-2)
22	(Ref)	1	MAIN PLATFORM ASSEMBLY, (See Platform Assembly Parts List Figure 6.1-1)
23	100046	AR	PIN, Scissors

Figure 6.2-2, Lift Cylinder Assembly

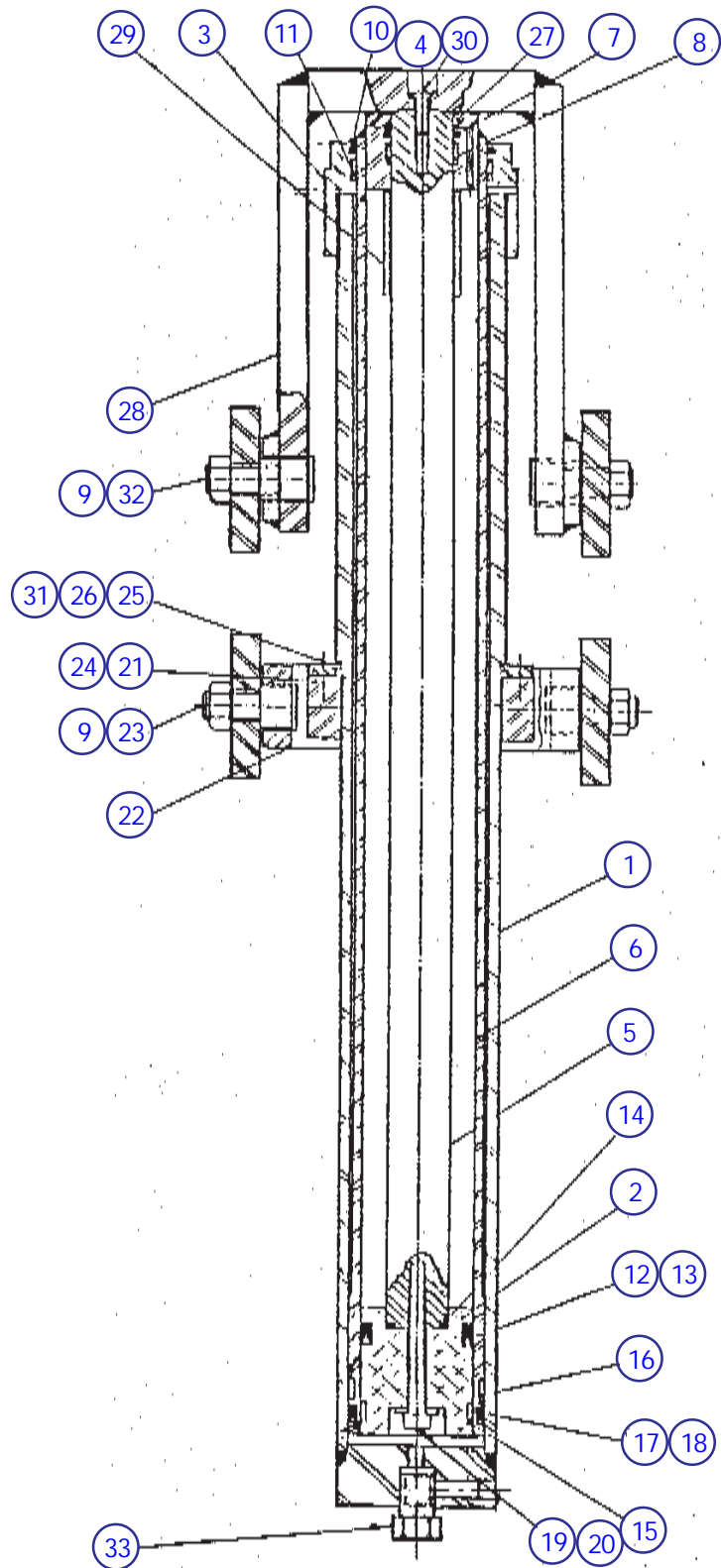


Figure 6.2-2, Lift Cylinder Assembly

Index No.	Skyjack Part No.	Qty.	Description
	100303	1	LIFT CYLINDER ASSEMBLY, Level One SJ105-XX Model and Level Three SJ109-XX-XX Model
	100304	1	LIFT CYLINDER ASSEMBLY, Level One SJ105.8-XX Models Only
	100305	1	LIFT CYLINDER ASSEMBLY, Level One All Models Except SJ105-XX
	100306	1	LIFT CYLINDER ASSEMBLY, Level Two
1	128044	1 per	CYLINDER BARREL, for Part# 100303
	128057	1 per	CYLINDER BARREL, for Part# 100304
	128058	1 per	CYLINDER BARREL, for Part# 100305
	128059	1 per	CYLINDER BARREL, for Part# 100306
2	128060	1 per	PISTON
3	128061	1 per	END CAP
	116405	AR	BREATHER, 1/4" NPT (Not Shown)
	108035	AR	BREATHER, 1/8"-27 NPT (Not Shown)
4	100829	1 per	FLAT HD BOLT, 1/2"-13 X 1.750"
5	128062	1 per	PISTON ROD, for Part# 100303
	128063	1 per	PISTON ROD, for Part# 100304
	128064	1 per	PISTON ROD, for Part# 100305 and Part# 100306
6	128065	1 per	INNER BARREL, for Part# 100303
	128066	1 per	INNER BARREL, for Part# 100304
	128067	1 per	INNER BARREL, for Part# 100305 and Part# 100306
7	*SEAL KIT	1 per	WIPER, Inner Rod
8	*SEAL KIT	1 per	WEAR RING, Inner Rod
9	100252	4 per	JAM NUT, 3/4"-10
10	*SEAL KIT	1 per	WIPER, Gland Nut
11	*SEAL KIT	1 per	WEAR RING, Gland Nut
12	*SEAL KIT	1 per	BACKUP RING, Piston
13	*SEAL KIT	1 per	O RING, Piston
14	*SEAL KIT	1 per	O RING, Piston Rod
15	*SEAL KIT	1 per	WEAR RING, Piston
16	*SEAL KIT	1 per	WEAR RING, Inner Barrel
17	*SEAL KIT	1 per	BACKUP RING, Inner Barrel
18	*SEAL KIT	1 per	O RING, Inner Barrel
19	128030	1 per	SC HD CAP SCREW, 3/8"-16 X 3.5"
20	125959	1 per	FLAT WASHER, 3/8" SAE Hardened
21	100246	1 per	INNER MOUNTING RING
	100309	2 per	BUSHING, 1" ID X 1"
22	100467	1 per	OUTER MOUNTING RING
	100309	2 per	BUSHING, 1" ID X 1"
23	100253	2 per	STUB BOLT, for Outside Ring
24	100254	2 per	STUB BOLT, for Inside Ring
25	103941	4 per	SC HD CAP SCREW, 1/4"-20 X .750"
26	104000	4 per	LOCK WASHER, 1/4"
27	106031	1 per	SHOCK ABSORTION RING
28	100832	1 per	CYLINDER YOKE, Long
	100826	1 per	CYLINDER YOKE, Medium
	100309	2 per	BUSHING, 1" ID X 1"

[Parts list continued on the following page](#)

Figure 6.2-2, Lift Cylinder Assembly (Continued)

Index No.	Skyjack Part No.	Qty.	Description
Parts list continued from the previous page.			
29	(Ref)	1 per	CYLINDER STROKE LIMITER, (See Stroke Limiter List Section 5)
30	100830	1 per	LIFT CYLINDER SCREW STOP
31	100307	4 per	CYLINDER RETAINING BLOCKS
32	100250	2 per	STUB BOLT, for Yoke
33	103799	1 per	HYDRAULIC FUSE, 4 Gal. Two or Three Cylinder Machines
	103138	1 per	HYDRAULIC FUSE, 6 Gal. One Cylinder Machines
	106030	1 per	HYDRAULIC FUSE, 6 Gal. In-Line
*	103761	1 per	LIFT CYLINDER SEAL KIT, Serial Number OOA to OAE
*	103757	1 per	LIFT CYLINDER SEAL KIT, Serial Number OAF to End

Figure 6.3-1, Base Assembly

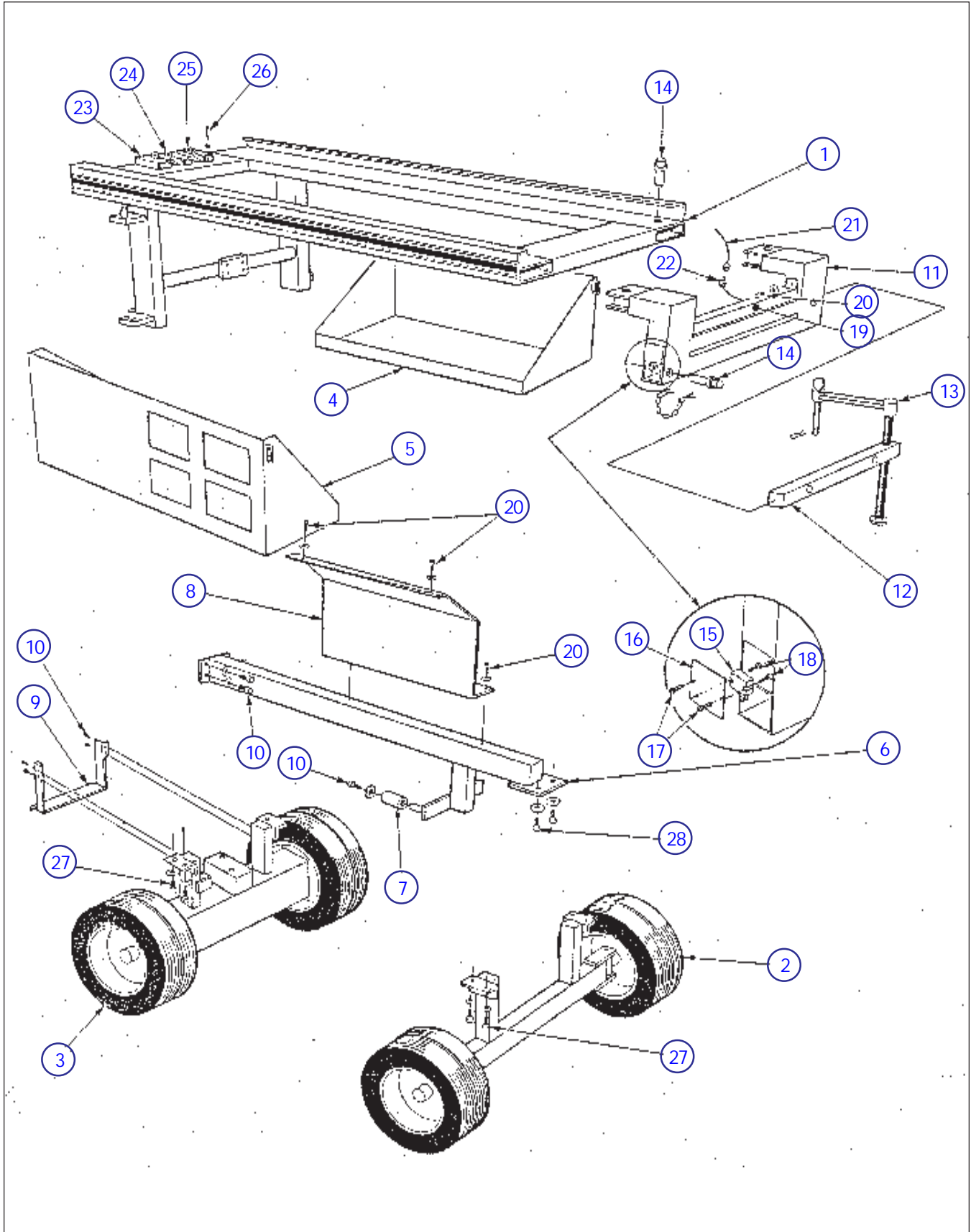


Figure 6.3-1, Base Assembly

Index No.	Skyjack Part No.	Qty.	Description	
1	100320	1	BASE FRAME, SJ105-10 thru SJ105.8-10	
	100319	1	BASE FRAME, SJ106-10 thru SJ109-15-13 EXCEPT SJ107-15	
	100318	1	BASE FRAME, SJ107-15 and SJ109-17-13	
	103463	1	BASE FRAME c/w AXLES, SJ105-10 thru SJ105.8-10	
	104004	1	BASE FRAME c/w AXLES, SJ105-10 thru SJ105.8-10 c/w #5 Tires	
	103458	1	BASE FRAME c/w AXLES, SJ106-10 thru SJ106.5-10	
	104007	1	BASE FRAME c/w AXLES, SJ106-10 thru SJ106.5-10 c/w #5 Tires	
	103459	1	BASE FRAME c/w AXLES, SJ106.8-10 Only	
	104008	1	BASE FRAME c/w AXLES, SJ106.8-10 Only c/w #5 Tires	
	103460	1	BASE FRAME c/w AXLES, SJ106-13 thru SJ106.8-13	
	104009	1	BASE FRAME c/w AXLES, SJ106-13 thru SJ106.8-13 c/w #5 Tires	
	103461	1	BASE FRAME c/w AXLES, SJ106-15 thru SJ106.8-15	
	104005	1	BASE FRAME c/w AXLES, SJ106-15 thru SJ106.8-15 c/w #5 Tires	
	103462	1	BASE FRAME c/w AXLES, SJ109-15-13 Only	
	104006	1	BASE FRAME c/w AXLES, SJ109-15-13 Only c/w #5 Tires	
	103455	1	BASE FRAME c/w AXLES, SJ107-15 Only	
	103457	1	BASE FRAME c/w AXLES, SJ109-17-13 Only	
	2	(Ref)	-	FRONT AXLE ASSEMBLY, (See Front Axle Assembly Parts List Figure 6.3-4)
3	(Ref)	-	REAR AXLE ASSEMBLY, (See Rear Axle Assembly Parts List Figure 6.3-3)	
4	(Ref)	-	ENGINE TRAY ASSEMBLY, (See Engine Tray Parts List Figure 6.4-1)	
5	(Ref)	-	FUEL TRAY ASSEMBLY, (See Fuel Tray Parts List Figure 6.4-2)	
6	100321	1	TRAY SUPPORT BRACKET, All Models c/w 18" Wheels Except SJ105-10 to SJ105.8-10 Models	
	101305	1	TRAY SUPPORT BRACKET, SJ105-10 to SJ105.8-10 Models	
	100330	1	TRAY SUPPORT BRACKET, All Models c/w 26" Wheels	
	103465	1	TRAY SUPPORT BRACKET, Base Frame Mounted (Not Shown)	
	7	100324	2	TRAY SUPPORT BRACKET ROLLER
	8	101279	1	FUEL SIDE COVER, All Models Except SJ105-10 to SJ105.8-10 Models
		101280	1	FUEL SIDE COVER, SJ105-10 to SJ105.8-10 Models
		101300	1	FUEL SIDE COVER PLATE
		100361	1	ENGINE SIDE COVER, All Models (Not Shown)
		9	128076	1
10	101632	4	HEX HD BOLT, 3/8"-16 X .750"	
	103999	4	LOCK WASHER, 3/8"	
	103472	4	FLAT WASHER, 3/8" SAE	
	11	100664	2	OUTRIGGER FRAME, All SJ10X-10, SJ10X-13, SJ10X-15 Models, EXCEPT SJ107-15, SJ109-17-10, and SJ109-17-13 Models
12	100667	2	OUTRIGGER FRAME, SJ107-15, SJ109-17-10 and SJ109-17-13	
	100663	2	OUTRIGGER EXTENSION, Upper Assembly, All SJ10X-10, SJ10X-13, SJ10X-15 Models, EXCEPT SJ107-15, SJ109-17-XX Models	
	100662	2	OUTRIGGER EXTENSION, Lower Assembly, All SJ10X-10, SJ10X-13, SJ10X-15 Models, EXCEPT SJ107-15, SJ109-17-XX Models	
	100661	2	OUTRIGGER EXTENSION, Upper Assembly, SJ107-15, SJ109-17-XX	
	100660	2	OUTRIGGER EXTENSION, Lower Assembly, SJ107-15, SJ109-17-XX	
	13	128068	4	SCREW JACK
128069		4	JACK HANDLE	
128070		4	JACK HANDLE KNOB	
14	100349	4	LOCKING PIN	
	103055	4	LOCKING PIN RETAINING CLIP	

[Parts list continued on the following page](#)

Figure 6.3-1, Base Assembly (Continued)

Index No.	Skyjack Part No.	Qty.	Description
Parts list continued from the previous page.			
15	102758	4	LIMIT SWITCH
	100618	4	LIMIT SWITCH SPACER
16	100611		LIMIT SWITCH COVER, Side
	100613	2	LIMIT SWITCH COVER, Box
	100618	2	GROMMET, 9/16"
17	103856	8	HEX HD BOLT 1/4"-20 NC X .750"
	104000	8	LOCK WASHER, 1/4"
	103995	8	FLAT WASHER, 1/4" SAE
18	103963	8	MACHINE SCREW, #10-32 X 1.5"
19	100620	2	WIRE COVER, Outrigger Limit Switch All Other Models
20	103856	12	HEX HD BOLT 1/4"-20 NC X .750"
	104000	12	LOCK WASHER, 1/4"
	103995	12	FLAT WASHER, 1/4" SAE
21	(Ref)	-	CABLE ASSEMBLY, Plug to Panel
	103255	AR/ft	CABLE, 18/4
	107711	1	• CONNECTOR ASSEMBLY, 5 Pole Female (When Replacing Old Style Connector Also Order Connector PT# 107712)
	103568	1 per	• • HOUSING c/w LATCH
	103570	1 per	• • FEMALE INSERT 4 PIN + GROUND
22	(Ref)	-	CABLE ASSEMBLY, Switches to Plug
	103256	AR/ft	CABLE, 18/2
	107712	1	• CONNECTOR ASSEMBLY, 5 Pole Male (When Replacing Old Style Connector Also Order Connector PT# 107711)
	103567	1 per	• • HOUSING
	103569	1 per	• • MALE INSERT 4 PIN + GROUND
23	(Ref)	1	LIMIT SWITCH, High Speed Cut Out
	102847	1	• LIMIT SWITCH BODY
	102882	1	• HEAD, Arm
	103142	1	• ACTUATOR, Lever
	103036	1	• STRAIN RELIEF
24	(Ref)	1AR	LIMIT SWITCH, Drive Cut Out
	102847	1	• LIMIT SWITCH BODY
	102882	1	• HEAD, Arm
	103224	1	• ACTUATOR, Lever c/w Roller
	103036	1	• STRAIN RELIEF
25	(Ref)	1AR	LIMIT SWITCH, Lift Cut Out
	102847	1	• LIMIT SWITCH BODY
	102882	1	• HEAD, Arm
	103142	1	• ACTUATOR, Lever
	103036	1	• STRAIN RELIEF
26	103963	2/sw	MACHINE SCREW, #10-32 X 1.5"
Parts list continued on the following page			

Figure 6.3-1, Base Assembly (Continued)

Index No.	Skyjack Part No.	Qty.	Description
27	Parts list continued from the previous page.		
	103900	8	HEX HD BOLT, 5/8"-11 X 1.250"
	103998	8	LOCK WASHER, 5/8"
	121837	1	KIT, Flashing light
	103743	1	• FLASHER, 12 Volt (Located @ electrical panel)
	121476	1	• LIGHT ASSEMBLY, Flashing 12 Volt
	121533	1	• • LENS, Amber
	114198	1	• • BULB, 12 Volt
	103110	AR/rl	LABEL, Stripe Red/Blue/Red
	102896	4	LABEL, Fork Lift Boot
	106705	1	LABEL, Do Not Alter Limit Switches
	103077	1	LABEL, Safety Bar
	100409	2	LADDER, Base Mounted Three Scissors Machines (Not Shown)
	109031	2	LADDER, Base Mounted Four Scissors Machines (Not Shown)
	109027	2	LADDER, Base Mounted Five Scissors Machines (Not Shown)
	100875	2	REAR AXLE REINFORCEMENT BAR, SJ107-15 and SJ109-17-13 Models c/w Bolt on Axles (Not Shown)
	100876	2	REAR AXLE REINFORCEMENT AXLE PLATE, SJ107-15 and SJ109-17-13 Models c/w Bolt on Axles (Not Shown)
	100877	2	REAR AXLE REINFORCEMENT BASE MOUNT PLATE, SJ107-15 and SJ109-17-13 Models c/w Bolt on Axles (Not Shown)

Figure 6.3-2. Front Axle Assembly

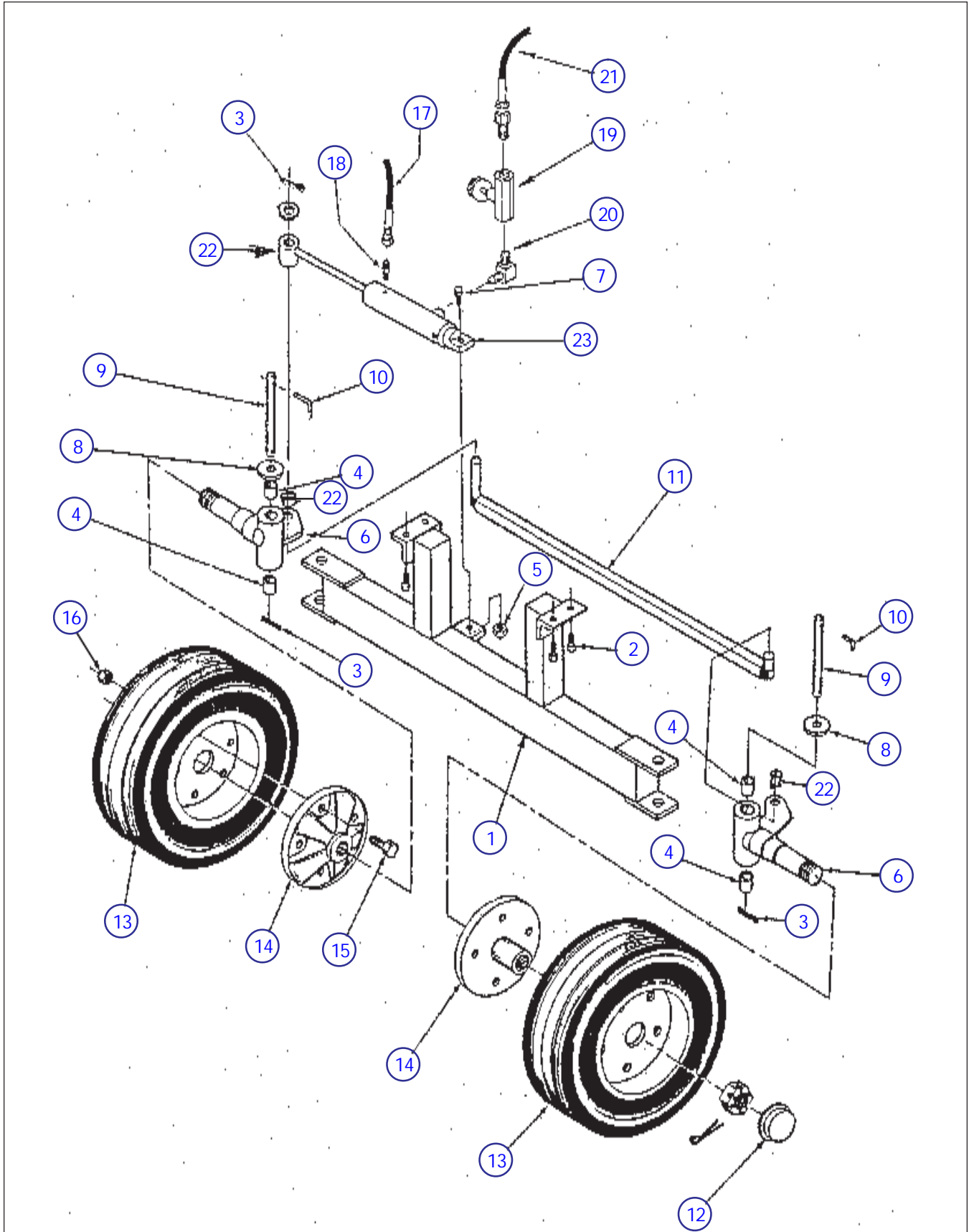


Figure 6.3-2. Front Axle Assembly

Index No.	Skyjack Part No.	Qty.	Description
1	100188	1	FRONT AXLE WELDMENT, All SJ10X-10 Models EXCEPT SJ106.8-10
	100192	1	FRONT AXLE WELDMENT, SJ106.8-10 Model Only
	100193	1	FRONT AXLE WELDMENT, All SJ10X-13 Models
	100194	1	FRONT AXLE WELDMENT, All SJ10X-15 Models EXCEPT SJ107-15 and SJ109-15-10,13
	100193	1	FRONT AXLE WELDMENT, SJ107-15 Model Only
	100195	1	FRONT AXLE WELDMENT, SJ109-15-10,13 Models Only
	128078	1	FRONT AXLE WELDMENT, SJ109-17-13 Model Only
	100863	1	FRONT AXLE WELDMENT, SJ107-15 Model Only Raised Steer Cylinder Bracket
	100865	1	FRONT AXLE WELDMENT, SJ109-15-10,13 Models Only Raised Steer Cylinder Bracket
	100861	1	FRONT AXLE WELDMENT, SJ109-17-13 Model Only Raised Steer Cylinder Bracket
	2	103900	4
103998		4	LOCK WASHER, 5/8"
3	103478	2	COTTER PIN, 1/4" Dia. X 1.250"
4	100050	4	BUSHING
5	103982	1	JAM NUT, 5/8"-11
6	108730	2	SPINDLE ASSEMBLY, Must also Replace Item #14 and Components
7	103897	1	HEX HD BOLT, 5/8"-11 X 2"
8	104129	2	BRONZE THRUST WASHER, 3/4"ID
9	100120	2	KING PIN
10	100121	2	RETAINING PIN, Long L
	100825	2	RETAINING PIN, Straight
11	100352	2	FLAT WASHER, 5/8" SAE, Used with each Tie Rod Assembly
	103478	2	COTTER PIN, 1/4" X 1.250" Used with each Tie Rod Assembly
	100266	1	TIE ROD ASSEMBLY, All SJ10X-10 Models EXCEPT SJ106.8-10
	100268	1	TIE ROD ASSEMBLY, SJ106.8-10 Model Only
	100270	1	TIE ROD ASSEMBLY, All SJ10X-13 Models
	100272	1	TIE ROD ASSEMBLY, All SJ10X-15 Models EXCEPT SJ107-15 and SJ109-15-10,13
	121648	1	TIE ROD ASSEMBLY, SJ109-15-13 Model Only
	106010	1	PIN, 1.560"
	106028	1	PIN, 2.870"
	101200	4	BRONZE THRUST WASHER, 5/8"ID
	103855	2	HEX HD BOLT, 1/4"-20 X 0.5"
104000	2	LOCK WASHER, 1/4"	
100859	1	TIE ROD ASSEMBLY, SJ109-15-10,13 Models Only Bolt On	
100853	1	SPHERICAL END, LH	
100855	1	JAM NUT, 5/8"-18 LH	
100854	1	SPHERICAL END, RH	
100846	1	JAM NUT, 5/8"-18 RH	
106011	1	TIE ROD ASSEMBLY, SJ107-15 Model Only	
106010	1	PIN, 1.560"	
106028	1	PIN, 2.870"	
101200	4	BRONZE THRUST WASHER, 5/8"ID	
103855	2	HEX HD BOLT, 1/4"-20 X 0.5"	
104000	2	LOCK WASHER, 1/4"	

[Parts list continued on the following page](#)

Figure 6.3-2. Front Axle Assembly (Continued)

Index No.	Skyjack Part No.	Qty.	Description
			Parts list continued from the previous page.
	100857	1	TIE ROD ASSEMBLY, SJ107-15 Model Only Bolt On
	100853	1	SPHERICAL END, LH
	100855	1	JAM NUT, 5/8"-18 LH
	100854	1	SPHERICAL END, RH
	100846	1	JAM NUT, 5/8"-18 RH
	106011	1	TIE ROD ASSEMBLY, SJ109-17-13 Model Only
	106010	1	PIN, 1.560"
	106028	1	PIN, 2.870"
	101200	4	BRONZE THRUST WASHER, 5/8"ID
	103855	2	HEX HD BOLT, 1/4"-20 X 0.5"
	104000	2	LOCK WASHER, 1/4"
	100851	1	TIE ROD ASSEMBLY, SJ109-17-13 Model Only Bolt On
	100853	1	SPHERICAL END, LH
	100855	1	JAM NUT, 5/8"-18 LH
	100854	1	SPHERICAL END, RH
	100846	1	JAM NUT, 5/8"-18 RH
12	106047	2	HUB CAP
13	103088	3	RIM AND SOLID TIRE, Type #2, 18" Dia. X 5.50
	102965	3	RIM AND FILLED TIRE, Type #3, 26" Dia.
	106185	3	RIM AND FILLED TIRE, Type #5, 18" Dia. X 9.50
14	107909	2	FRONT HUB ASSEMBLY
	102833	1	• HUB
	102749	1	• NUT, Castle 1"-14 UNF
	102829	1	• WASHER, Flat
	102865	1	• CAP, Dust
	103003	1	• BEARING, Outer Cone
	103009	1	• BEARING, Inner Cone
	103085	1	• COTTER PIN, 3/16" X 1.5"
	103144	1	• SEAL, Grease
	102978	1	• CUP, Bearing Inner
	102977	1	• CUP, Bearing Outer
15	103908	5 per	BOLT, 1/2"-20 X 1.5"
	103470	5 per	LOCK WASHER, 1/2"
16	103349	5 per	WHEEL NUT, 1/2"-20 LUG
	103199	5 per	WHEEL BOLT, 1/2"-20 LUG
17	(Ref)	1	HOSE, Cylinder to Manifold (Reference Hose List Section 5)
18	(Ref)	1	ADAPTER, Straight (Reference Fitting List Section 5)
	(Ref)	1	ADAPTER, Elbow (Reference Fitting List Section 5)
19	103355	1	VALVE, Flow Control
20	(Ref)	1	FITTING, Elbow (Reference Fitting List Section 5)
21	(Ref)	1	HOSE, Valve to Manifold (Reference Hose List Section 5)
22	100259	1 per	BUSHING
23	115691	1	STEER CYLINDER, (Ref Steer Cylinder Parts List Figure 6.3-4)

Figure 6.3-3, Rear Axle Assembly

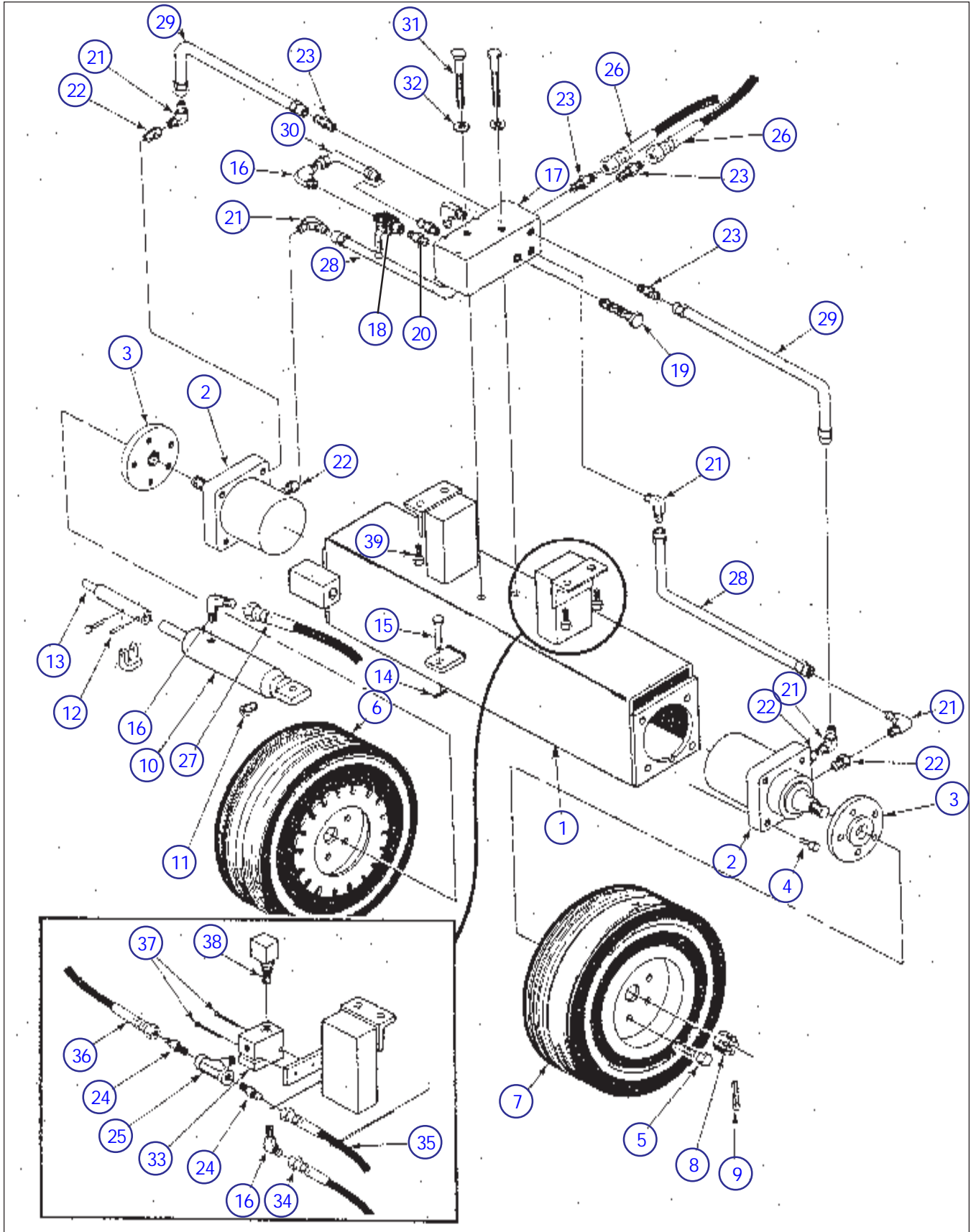


Figure 6.3-3, Rear Axle Assembly

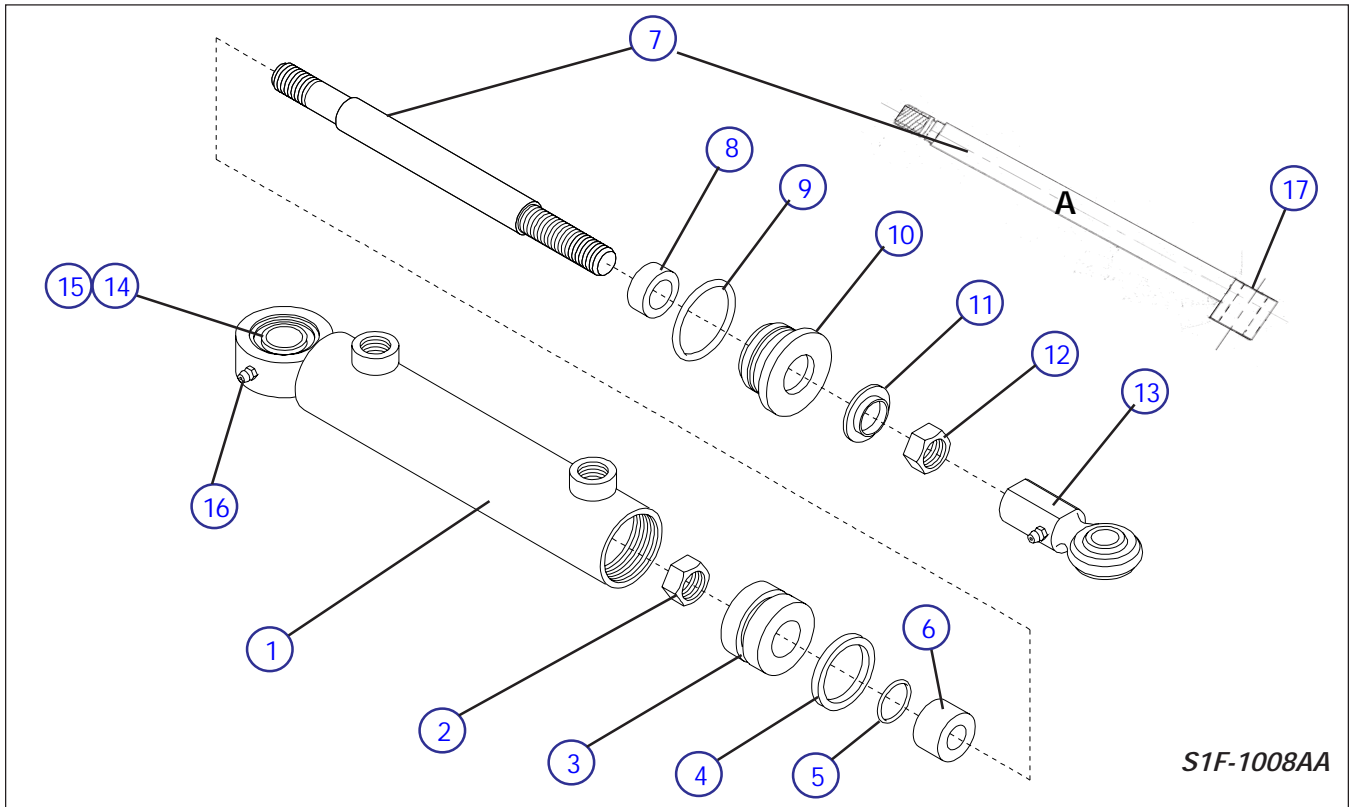
Index No.	Skyjack Part No.	Qty.	Description
1	100031	1	REAR AXLE WELDMENT, All SJ10X-10 Models EXCEPT SJ106.8-10
	100881	1	REAR AXLE WELDMENT, All SJ10X-10 c/w #5 Tires EXCEPT SJ106.8-10
	100035	1	REAR AXLE WELDMENT, SJ106.8-10 Model Only
	100882	1	REAR AXLE WELDMENT, SJ106.8-10 Model Only c/w #5 Tires
	100036	1	REAR AXLE WELDMENT, All SJ10X-13 Models
	100883	1	REAR AXLE WELDMENT, All SJ10X-13 Models c/w #5 Tires
	100037	1	REAR AXLE WELDMENT, All SJ10X-15 Models EXCEPT SJ107-15, SJ109-15-XX
	100884	1	REAR AXLE WELDMENT, All SJ10X-15 Models c/w #5 Tires EXCEPT SJ107-15, SJ109-15-10,13
	100038	1	REAR AXLE WELDMENT, SJ109-15-XX Models
	100885	1	REAR AXLE WELDMENT, SJ109-15-XX Models c/w #5 Tires
	128034	1	REAR AXLE WELDMENT, SJ107-15. 39.5" Axle Width
	128035	1	REAR AXLE WELDMENT, SJ109-17-13. 45.5" Axle Width
	100042	1	REAR AXLE WELDMENT, SJ107-15 c/w Model RE3220 Hydraulic Motors. 36.5" Axle Width
	100045	1	REAR AXLE WELDMENT, SJ109-17-13 c/w Model RE3220 Hydraulic Motors. 42.5" Axle Width
	2	103132	2
103131		2	HYDRAULIC MOTOR, MODEL RE3207, 26" Dia. Wheels SJ107-15 39.5" Axle Width, SJ109-17-13 45.5" Axle Width
102689		2	HYDRAULIC MOTOR, MODEL RE3220, 26" Dia. Wheels SJ107-15 36.5" Axle Width, SJ109-17-13 42.5" Axle Width
3	107912	2	REAR HUB, 1.25" Shaft Dia.
	107037	2	REAR HUB, 1.5" Shaft Dia.
4	103902	8	HEX HD. BOLT, 1/2"-13 X 2.250"
	103470	8	LOCK WASHER, 1/2"
5	103199	10	WHEEL LUG BOLT
6	104178	1	RIM AND SOLID TIRE WITH BRAKE, Type #2, 18" Dia. X 5.50
	100196	1	RIM AND FILLED TIRE WITH BRAKE, Type #3, 26" Dia.
	104182	1	RIM AND FILLED TIRE WITH BRAKE, Type #5, 18" Dia. X 9.50
7	103088	3	RIM AND SOLID TIRE, Type #2, 18" Dia. X 5.50
	102965	3	RIM AND FILLED TIRE, Type #3, 26" Dia.
	106185	3	RIM AND FILLED TIRE, Type #5, 18" Dia. X 9.50
8	102749	2	CASTLE NUT, 1"-14 X .560"
	106451	2	LOCK NUT, 1"-14
	106230	2	LOCK NUT, 1 1/4"-12
	103789	2	TOOTHED LOCK WASHER, 1" ID
	103969	2	TOOTHED LOCK WASHER, 1.250" ID
9	122071	2	COTTER PIN, 1/8" X 2"
10	(Ref)	1	BRAKE CYLINDER, (See Brake Cylinder Parts List Figure 6.3-5)
11	108035	1	BREATHER
12	103940	1	SC HD CAP SCREW, 1/4"-20 X 1 1/4"
	104000	1	LOCK WASHER, 1/4"
	103980	1	NUT, 1/4"-20
	104488	1	BRAKE PIN LH, All Tire Types, EXCEPT 26" Dia. Filled
13	105890	1	BRAKE PIN RH, All Tire Types, EXCEPT 26" Dia. Filled
	104458	1	BRAKE PIN LH, 26" Dia. Filled Tires Only
	105891	1	BRAKE PIN RH, 26" Dia. Filled Tires Only
	103982	1	JAM NUT, 5/8"-11
15	103897	1	HEX HD BOLT, 5/8"-11 X 2"

Parts list continued on the following page

Figure 6.3-3, Rear Axle Assembly (Continued)

Index No.	Skyjack Part No.	Qty.	Description
			Parts list continued from the previous page.
16	(Ref)	1	FITTING, 1/4"NPT #6JIC Elbow (Reference Fitting List Section 5)
	(Ref)	1	FITTING, 1/4"O Ring #6JIC Elbow (Reference Fitting List Section 5)
17	N/A	1	REAR MANIFIOLD, Lever Type Free Wheeling Valve
	100379	1	REAR MANIFIOLD, Knob Type Free Wheeling Valve
18	102573	1	FREE WHEELING VALVE, Lever Type
	103136	1	FREE WHEELING VALVE, Knob Type (Not Shown)
19	103355	1	FLOW DIVIDER
20	(Ref)	1	FITTING, 3/8"NPT Nipple (Reference Fitting List Section 5)
21	(Ref)	7	FITTING, 3/8"NPT #6JIC Elbow (Reference Fitting List Section 5)
22	(Ref)	4	FITTING, Adapter (Reference Fitting List Section 5)
23	(Ref)	3	FITTING, 3/8"NPT #6JIC Straight (Reference Fitting List Section 5)
24	(Ref)	2	FITTING, 1/4"NPT #6JIC Straight (Reference Fitting List Section 5)
25	(Ref)	2	FITTING, 1/4"NPT (Reference Fitting List Section 5)
26	(Ref)	2	HOSE, Drive All Models (Reference Hose List Section 5)
27	(Ref)	2	HOSE, Brake All Models (Reference Hose List Section 5)
28	100712	2	TUBE, Lower All SJ10X-10 Models EXCEPT SJ106.8-10
	100716	2	TUBE, Lower SJ106.8-10 Model Only
	100714	2	TUBE, Lower All SJ10X-13 Models
	100715	2	TUBE, Lower All SJ10X-15 Models EXCEPT SJ107-15 and SJ109-15-13
	100719	2	TUBE, Lower SJ107-15 Model Only
	100717	2	TUBE, Lower SJ109-15-13 Model Only
	100718	2	TUBE, Lower SJ109-17-13 Model Only
29	100720	2	TUBE, Upper All SJ10X-10 Models EXCEPT SJ106.8-10
	100724	2	TUBE, Upper SJ106.8-10 Model Only
	100722	2	TUBE, Upper All SJ10X-13 Models
	100723	2	TUBE, Upper All SJ10X-15 Models EXCEPT SJ107-15 and SJ109-15-13
	100727	2	TUBE, Upper SJ107-15 Model Only
	100725	2	TUBE, Upper SJ109-15-13 Model Only
	100726	2	TUBE, Upper SJ109-17-13 Model Only
30	N/A	1	TUBE, Freewheeling Valve Loop
31	103863	2	HEX HD BOLT, 1/4"-20 X 3.5"
32	104000	2	LOCK WASHER, 1/4"
	106515	1	LABEL, Brake Lockout
	103297	1	LABEL, Free Wheeling Valve
	(Ref)	1	LABEL, Serial Plate
33	103615	1	MANIFOLD, Brake Dump
34	(Ref)	1	HOSE, Brake Manifold to Tank (Reference Hose List Section 5)
35	(Ref)	1	HOSE, Fitting to Brake Cylinder (Reference Hose List Section 5)
36	(Ref)	1	HOSE, Main Manifold to Brake Fitting (Reference Hose List Section 5)
37	103861	2	HEX HD BOLT, 1/4"-20 X 2"
	104000	2	LOCK WASHER, 1/4"
	103995	2	FLAT WASHER, 1/4" SAE
38	103656	1	VALVE, Brake Dump N.O.
	103613	1	SOLINOID, 12Volt
	100056	AR	DUMP ORIFICE, Std. Tires 0.076" (Located in Fitting)
39	103900	4	HEX HD BOLT, 5/8"-11 X 1.250"
	103998	4	LOCK WASHER, 5/8"
	104212	1	SEAL KIT, All Hydraulic REXX07 Motors
	104211	1	SEAL KIT, All Hydraulic REXX20 Motors

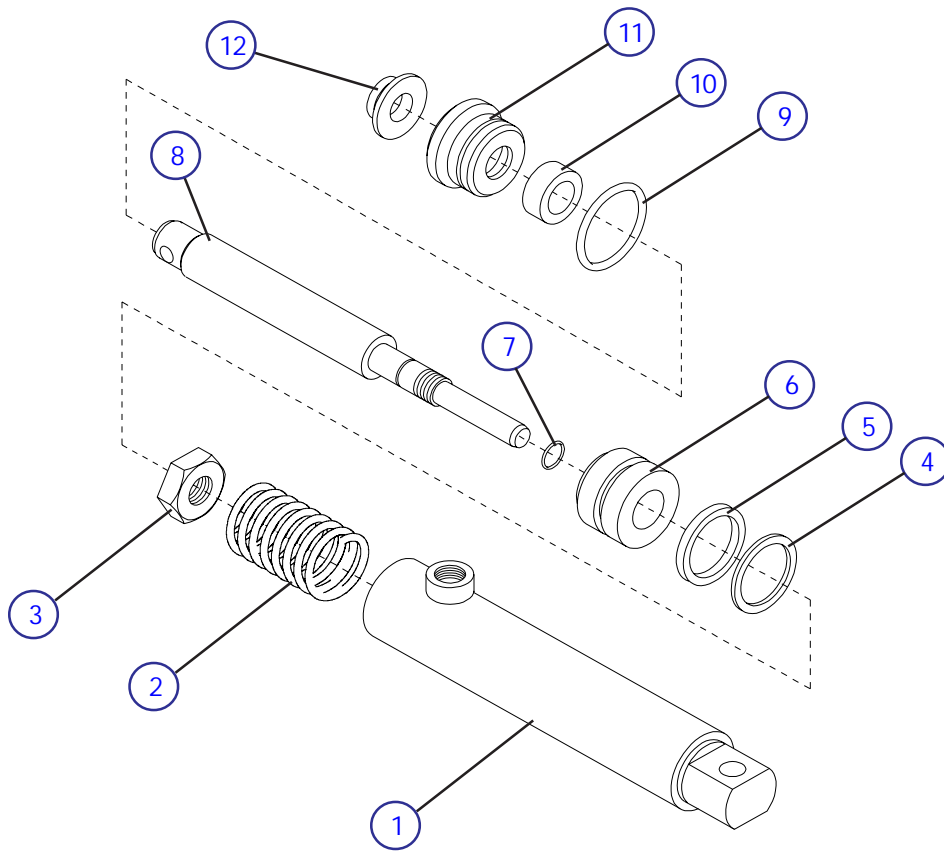
Figure 6.3-4, Steer Cylinder Assembly



S1F-1008AA

Index No.	Skyjack Part No.	Qty.	Description
A	121133	-	CYLINDER ASSEMBLY, Steer (Models c/w Old Style Rod 3/4" Dia)
B	120240	-	CYLINDER ASSEMBLY, Steer (Models c/w Spherical Bearing)
1	120235	1	• BARREL, Steer cylinder
2	103830	1	• NUT, Lock 5/8-11 grade C
3	118844	1	• PISTON
*4	103825	1	• SEAL, Piston
*5	110976	1	• O-RING, Rod
6	117671	1	• SPACER, Stroke
7	121134	1	• ROD, Piston, A 3/4" Dia
	106023	1	• ROD, Piston, A 5/8" Dia (Not Shown) (Cylinder Not Available)
	117047	1	• ROD, Piston, B
*8	103826	1	• SEAL, Rod
*9	120436	1	• O-RING, Gland
10	120148	1	• GLAND, Cylinder
*11	103827	1	• WIPER, Rod
12	100846	1	• NUT, Jam 5/8-18, B
13	100847	1	• END, Cylinder rod, B
14	102025	1	• BEARING, Spherical
15	104114	2	• RING, Retaining
16	103513	1	• FITTING, Grease
17	100259	3	BUSHING
	105816	AR	KIT, Seal repair
			* Part of Seal Repair Kit, 105816
			NOTE: If Replacing Older Cylinder Component Item Must Replace Cylinder

Figure 6.3-5, Brake Cylinder Assembly



S1F-1007AB

Index No.	Skyjack Part No.	Qty.	Description
A	120220	-	CYLINDER ASSEMBLY, Brake
1	120153	1	• BARREL, Brake cylinder
2	102844	1	• SPRING, Brake return
3	103830	1	• NUT, Lock 5/8-11 grade C
4	120368	1	• RING, Back-up
*5	111295	1	• SEAL, Piston
6	118844	1	• PISTON
*7	110976	1	• O-RING, Rod
8	120154	1	• ROD, Brake
*9	120436	1	• O-RING, Gland
*10	103826	1	• SEAL, Rod
11	120148	1	• GLAND
*12	103827	1	• WIPER, Rod
*	105816	AR	KIT, Seal repair * Part of Seal Repair Kit, 105816

NOTE: If Replacing Older Cylinder Component Item Must Replace Cylinder

Figure 6.4-1, Engine Tray Assembly

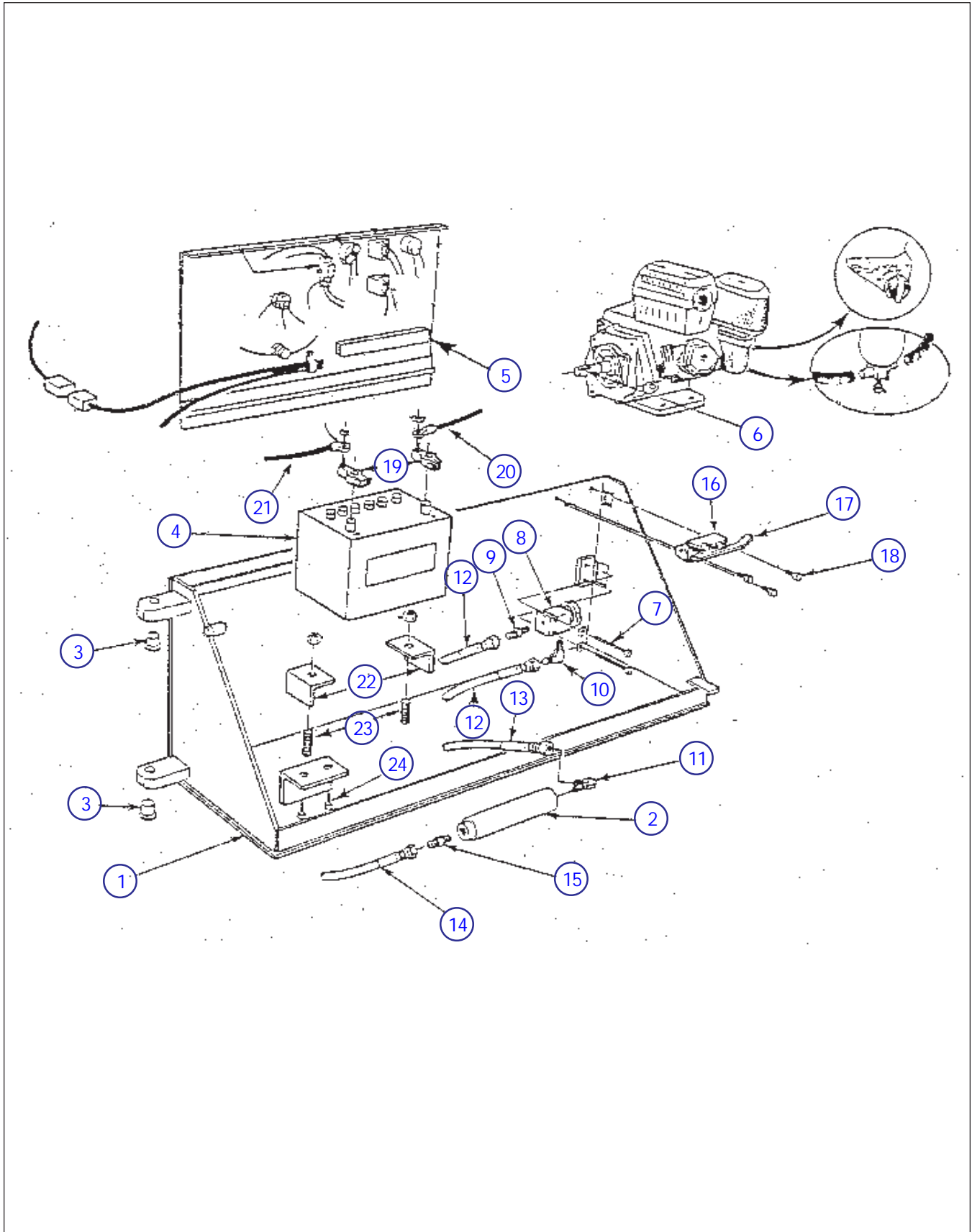


Figure 6.4-1, Engine Tray Assembly

Index No.	Skyjack Part No.	Qty.	Description
1	103809	1	ENGINE TRAY
2	106578	2	CUSHION CYLINDER
	103856	2	HEX HD BOLT, 1/4"-20 X .750"
	104000	2	LOCK WASHER, 1/4"
	103980	2	NUT, 1/4"-20
3	100335	2	BUSHING, Bronze Flanged
4	103295	1	BATTERY, 12Volt
	101720	1	PLYWOOD, 3/8" X 6.5" X 10.5"
5	(Ref)	1	ELECTRICAL PANEL, (See Electrical Panel Parts List Figure 6.4-3)
	103855	4	HEX HD BOLT, 1/4"-20 X .500"
	104000	4	LOCK WASHER, 1/4"
	103995	4	FLAT WASHER, 1/4" SAE
6	(Ref)	1	MOTOR ASSEMBLY, (See Engine Assembly Parts List Figure 6.4-2)
7	103861	2	HEX HD BOLT, 1/4"-20 X 2"
	104000	2	WASHER, Lock 1/4"
	103995	2	WASHER, Flat 1/4" SAE
8	(Ref)	1	MANUAL LOWERING VALVE ASSEMBLY
	103136	1	• VALVE, Manual Lowering
	103137	1	• BLOCK, Manual Lowering
9	(Ref)	1	FITTING, (See Fitting Ref Sheet Section 5)
10	(Ref)	1	FITTING, (See Fitting Ref Sheet Section 5)
11	(Ref)	1	FITTING, (See Fitting Ref Sheet Section 5)
12	(Ref)	1	HOSE, Emergency Lowering (See Hose Ref Sheet Section 5)
13	(Ref)	1	HOSE, Cushion Cylinder to Manifold RS (See Hose Ref Sheet Section 5)
14	(Ref)	1	HOSE, Cushion Cylinder to Manifold LS (See Hose Ref Sheet Section 5)
15	(Ref)	1	FITTING, (See Fitting Ref Sheet Section 5)
16	102781	1	LATCK, LH
17	NA	1	LATCH HANDLE
18	103864	3	HEX HD BOLT, 5/16"-18 X 1"
19	107898	1	POST, Kit Positive and Negative Battery Terminals
20	103148	AR/ft	CABLE, 4AWG
21	103148	AR/ft	CABLE, 4AWG
22	101273	2	HOLD DOWN, Battery
23	103884	2	HEX HD BOLT, 5/16"-18 X 2.5"
	103404	2	WASHER, Lock 5/16"
	103996	2	WASHER, Flat 5/16" SAE
	100397	2	NUT, 5/16"-18
24	104207	1	MANIFOLD SPACER
	103872	1	HEX HD BOLT, 3/8"-16 X 2.250"
	103999	1	WASHER, Lock 3/8"
	102631	1	LABEL, Skyjack Logo Lg.
	105998	1	LABEL, Emergency Down Button
	102505	1	LABEL, Emergency Lowering Valve

Figure 6.4-2, Engine Assembly

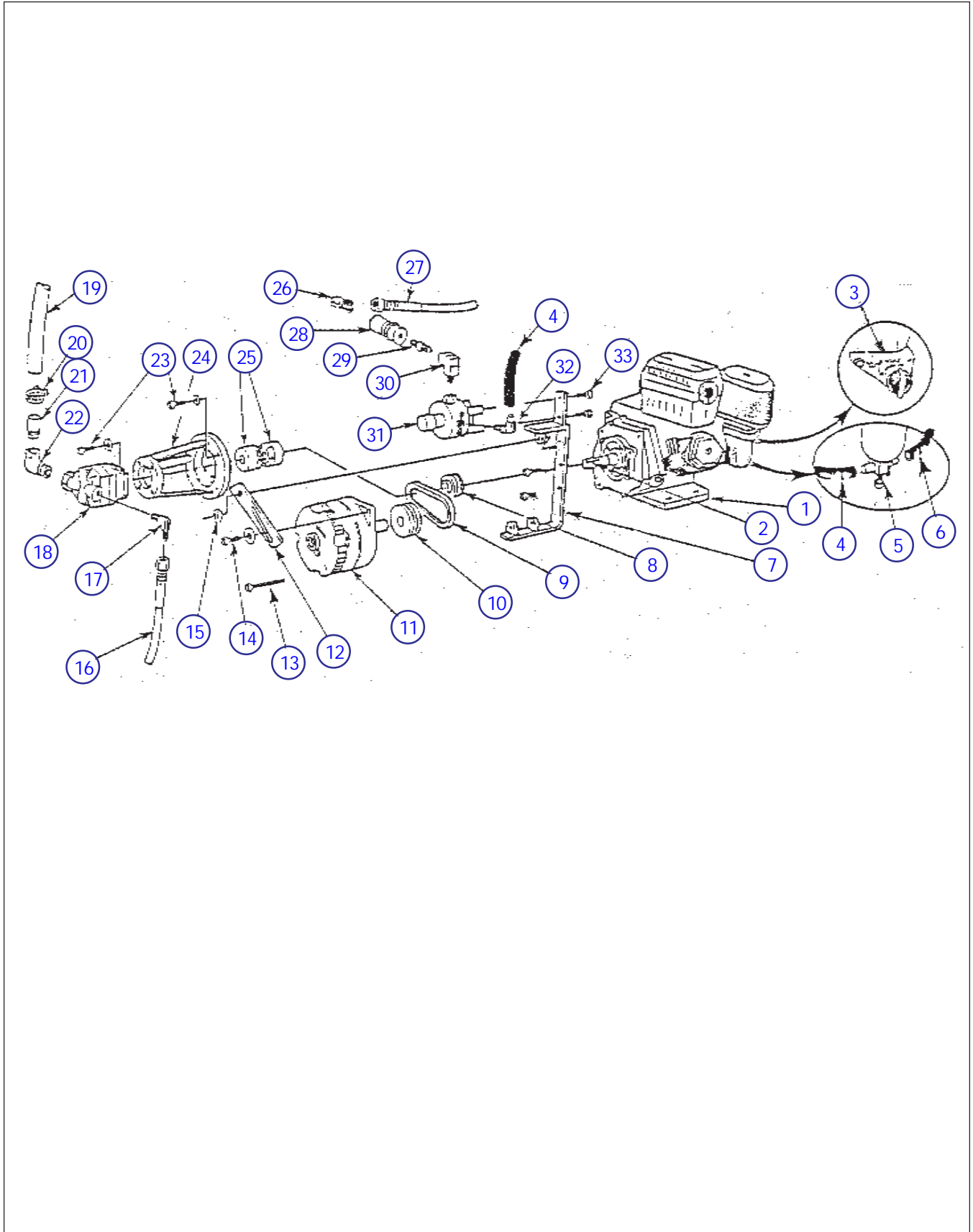
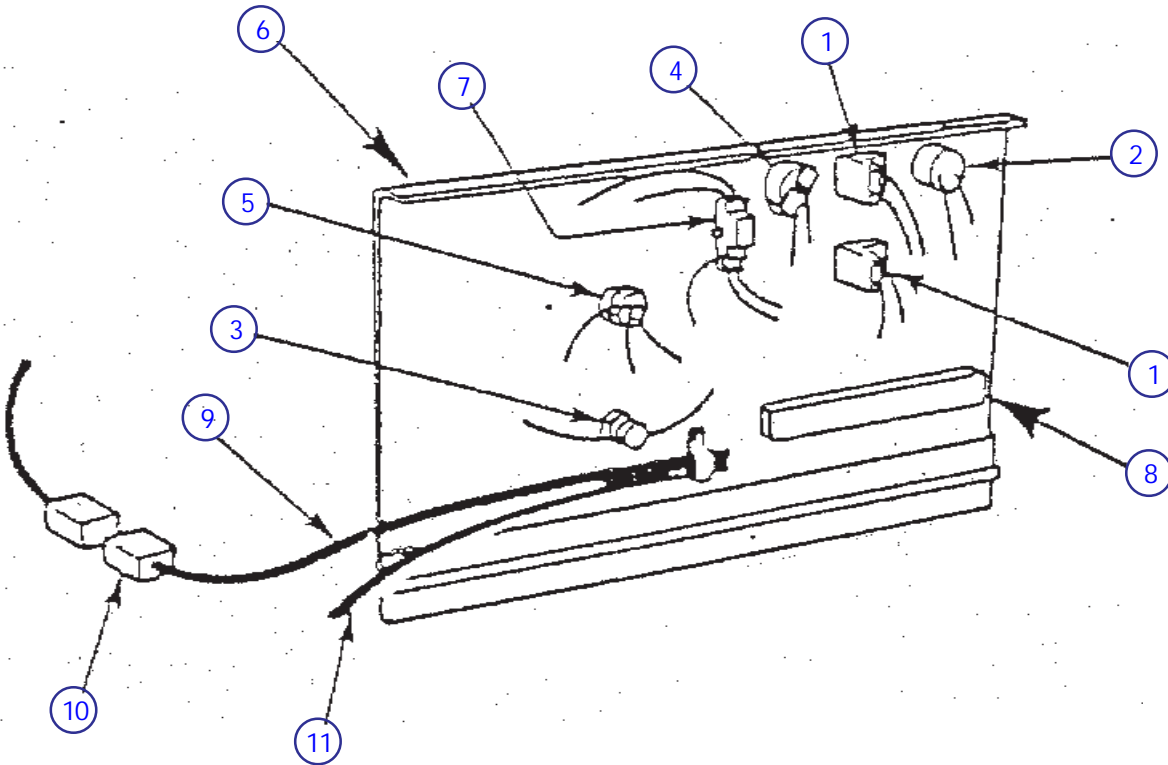


Figure 6.4-2, Engine Assembly

Index No.	Skyjack Part No.	Qty.	Description
1	106438	1	ENGINE, Honda
	102839	1	ENGINE, Wisconsin Robin
2	NA	1	KEYWAY KEY
3	NA	1	SWITCH, KEY (Consult Local Engine Dealer)
	NA	1	• KEY (Consult Local Engine Dealer)
4	111638	AR/ft	HOSE, Propane 3/8"
5	NA	1	VALVE, Propane Mixture (Consult Local Engine Dealer)
6	702252	AR/ft	HOSE, 1/4"
7	103711	1	BRACKET, Alternator
8	106954	1	PULLEY, Engine Shaft Honda Engine
	106930	1	PULLEY, Engine Shaft Wisconsin Robin Engine
	*(CS)	1	TANER LOCK BUSHING
9	*(CS)	1	BELT, V
10	NA	1	PULLEY, Alternator Shaft
11	*(CS)	1	ALTERNATOR
12	101281	1	BRACKET, Alternator Tension
13	125958	1	HEX HD BOLT, 3/8"-16 X 3"
	103999	1	WASHER, Lock 3/8"
	103978	1	NUT, 3/8"-16
14	103885	1	HEX HD BOLT. 5/16"-18 X 1.750"
	103996	2	WASHER, Flat 5/16" SAE
	103404	1	WASHER, Lock 5/16"
	100397	1	NUT, 5/16"-18
15	103864	1	HEX HD BOLT. 5/16"-18 X 1
	103996	2	WASHER, Flat 5/16" SAE
	103404	1	WASHER, Lock 5/16"
	100397	1	NUT, 5/16"-18
16	(Ref)	1	HOSE, Pump to Manifold (See Hose Ref Sheet Section 5)
17	(Ref)	1	FITTING, (See Fitting Ref Sheet Section 5)
18	102906	1	PUMP, 2 Bolt Mount (4 Bolt Mount (NA), Replace Pump Adaptor Bracket)
19	103032	AR/ft	HOSE, SUCTION 3/4" ID
20	102854	2	CLAMP, Gear
21	(Ref)	1	FITTING, Hose Barb (See Fitting Ref Sheet Section 5)
22	(Ref)	1	FITTING, (See Fitting Ref Sheet Section 5)
23	103864	4	HEX HD BOLT, 5/16"-18 X 1"
	103404	4	WASHER, Lock 5/16"
	103996	4	WASHER, Flat 5/16"
24	109188	1	BRACKET, Pump Adaptor Wisconsin Robin Engine
	101301	1	BRACKET, Pump Adaptor Honda Engine
25	*(CS)	1	COUPLING, Pump
	*(CS)	1	COUPLING, Engine
	*(CS)	1	COUPLING, Spider
26	103158	1	FITTING, Brass Elbow Propane
27	103097	1	HOSE, Propane
28	111618	1	SHUT OFF, Propane
29	103167	1	FITTING, Brass Adaptor
30	103164	1	FITTING, Brass Elbow
31	111634	1	REGULATOR, Propane
32	102907	1	FITTING, Brass Elbow
33	103890	2	HEX HD BOLT, 1/4"-20 X 1"
	104000	2	WASHER, Lock 1/4"
	*(CS)		NOTE: Please Consult Factory and Provide Model and Serial Numbers

Figure 6.4-3, Electrical Panel Assembly



Index No.	Skyjack Part No.	Qty.	Description
1	(Ref)	2	SWITCH ASSEMBLY, Up and Down
	102851	1 per	HEAD, Push Button Black
	103100	1 per	BASE, Contact
	103141	1 per	BLOCK, N.O. Contact
	103081	1	LABEL, Up
	102667	1	LABEL, Down
2	103057	1	BEEPER, 12Volt
3	117325	AR	CIRCUIT BREAKER, 15A
	108558	AR	FUSE HOLDER (If Equipped)
	102773	AR	FUSE, 15A (If Equipped)
4	103336	1	HOUR METER
5	103068	2	FUSE INSULATOR
6	101251	1	ELECTRICAL PANEL
7	103207	1	ENGINE RELAY, If replacing may also have to replace Socket and Track below.
	103271	1	SOCKET, Double Relay
	121460	2	CLIP, Relay
	102874	1	TRACK, Relay
	103011	1	TERMINAL STRIP
9	(Ref)	1	CABLE, Panel
	102887	AR/ft	CABLE, 16/15
10	102515	1	PLUG, Female 12 Pin
11	103148	AR/ft	CABLE, 4AWG

Figure 6.4-4, Main Manifold Assembly

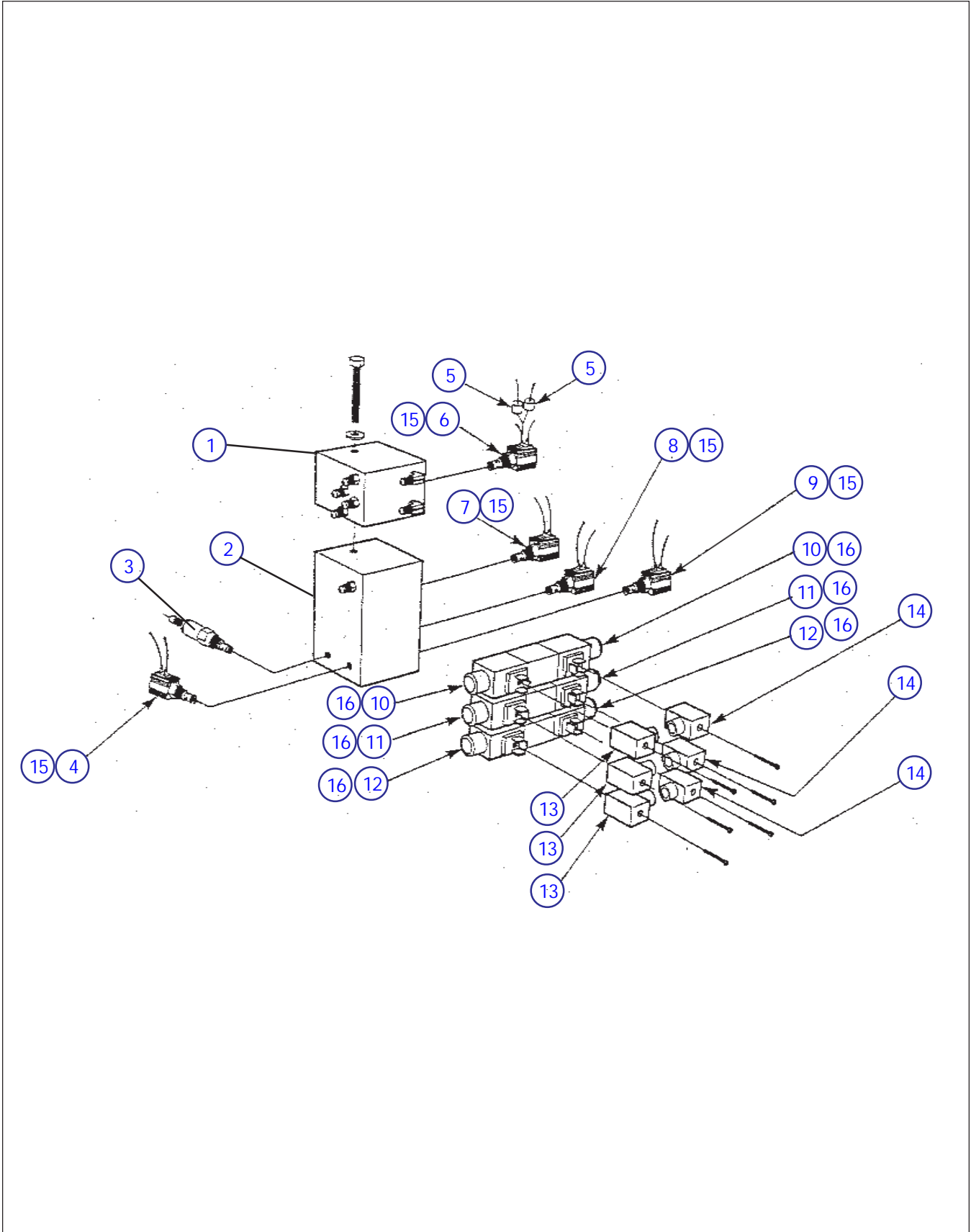
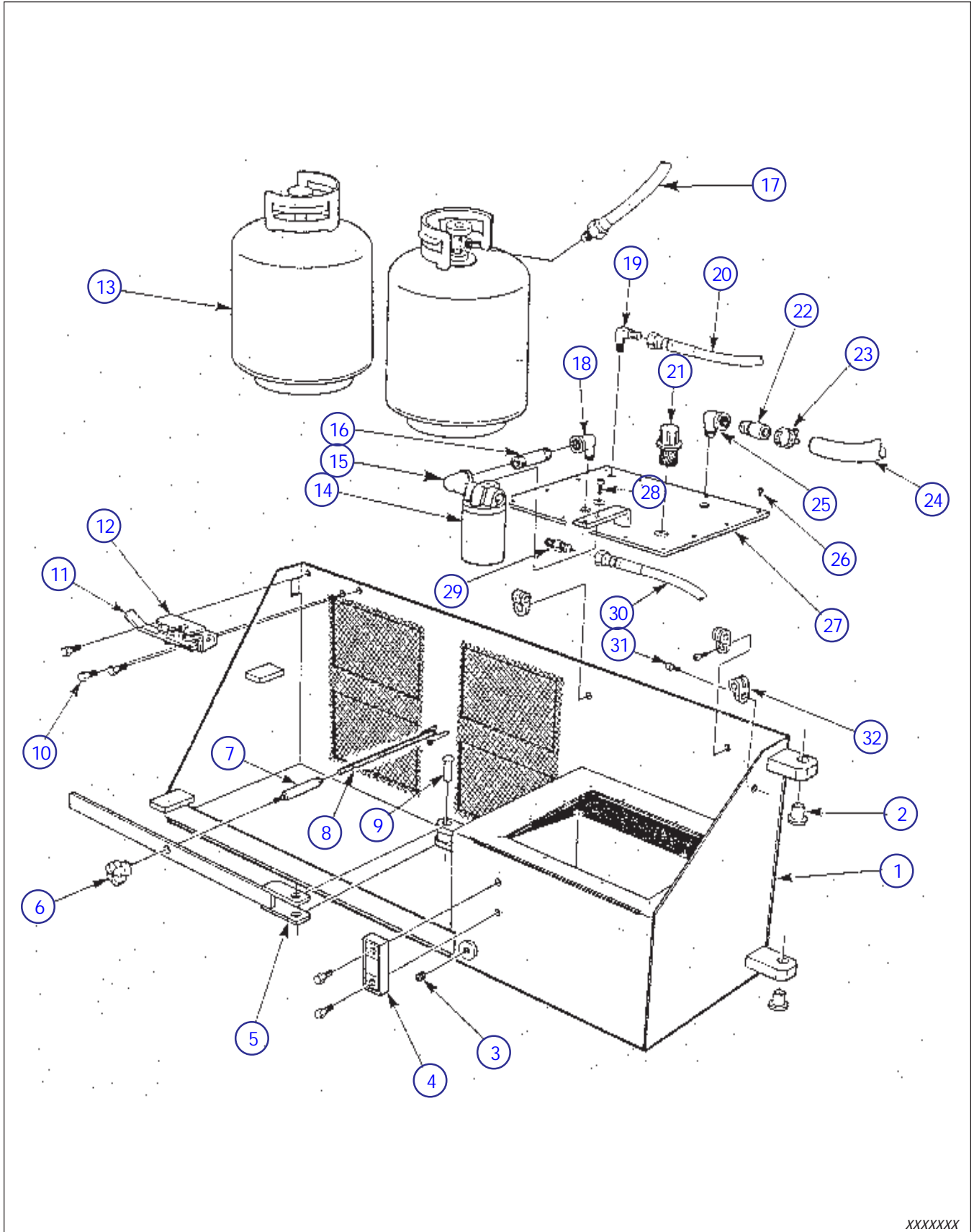


Figure 6.4-4, Main Manifold Assembly

Index No.	Skyjack Part No.	Qty.	Description
1	100419	1	UPPER MANIFOLD
2	103410	1	MAIN MANIFOLD
	103313	1	HELI COIL
	100055	AR	LOWERING ORIFICE, One Lift Cylinder (Red 0.081") (Between Manifolds)
	100057	AR	LOWERING ORIFICE, Two Lift Cylinder (Silver 0.098") (Between Manifolds)
	100058	AR	LOWERING ORIFICE, Three Lift Cylinder (Green 0.128") (Between Manifolds)
	103756	1	KIT, O Ring (Between Manifolds)
	104142	4	• O RING, Small
	104143	3	• O RING, Large
3	103214	1	RELIEF VALVE, Lift Pressure (Must be Set After Installation)
	103214	1	RELIEF VALVE, System Pressure (Must be Set After Installation)
4	103655	1	LOWERING VALVE
5	102921	AR	DIODE, 1A 1000PIV
6	103623	1	BRAKE VALVE
7	103655	1	SPEED VALVE, NC
	100056	1	SPEED ORIFICE, Low Speed 0.076" (Located Behind 1/8" NPT Plug On Bottom of Manifold)
8	103655	1	SPEED VALVE, NC
	100059	1	SPEED ORIFICE, Second Speed 0.052" (Located Behind Speed Valve)
9	102626	1	DUMP VALVE
10	103397	1	3 POSITION/4WAY VALVE, Drive
11	103397	1	3 POSITION/4WAY VALVE, Steer
12	103397	1	3 POSITION/4WAY VALVE, Lift
13	104409	3	CONNECTOR, Black
14	104345	3	CONNECTOR, Gray
15	103613	5	SOLINOID, Valve
16	107440	6	SOLINOID, 12Volt Vickers Brand
	103345	1	SOLINOID, 12Volt Abex Brand
	103691	1	SOLINOID, 12Volt Rexroth Brand

Figure 6.5-1, Fuel Tray Assembly

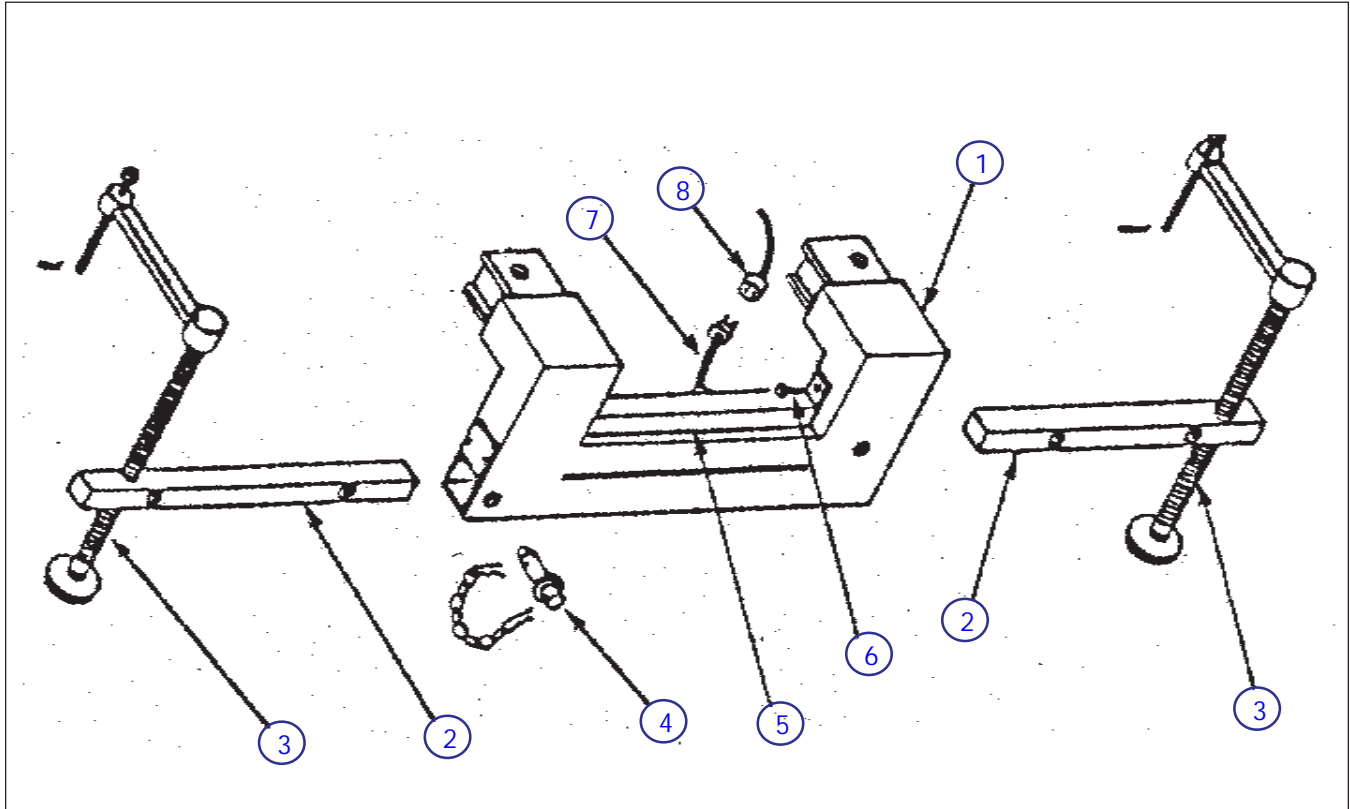


XXXXXXX

Figure 6.5-1, Fuel Tray Assembly

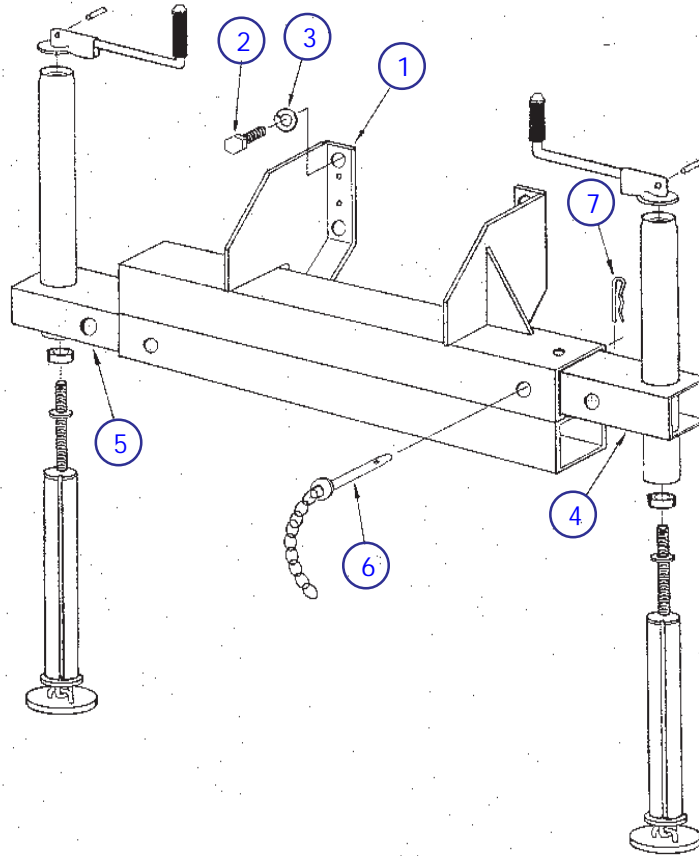
Index No.	Skyjack Part No.	Qty.	Description
1	103813	1	FUEL TRAY
2	100335	2	BUSHING, Bronze Flanged
3	103339	1	DRAIN PLUG
4	103236	1	OIL LEVEL INDICATOR
5	103816	1	PROPANE CYLINDER BAR
6	101299	1	KNOB
7	101295	1	TENSION BAR
8	101272	1	TENSION ROD
9	103114	1	PIVOT PIN, 3/8" Dia
	100734	1	WASHER, Pivot Pin Lock
10	103864	3	HEX HD BOLT, 5/16"-18 X 1"
11	NA	1	LATCH HANDLE
12	102780	1	LATCH, RH
13	103013	2	PROPANE CYLINDER
14	110825	1	FILTER ASSEMBLY, Spin On Type
	108628	1	• OIL FILTER ELEMENT, Spin On Type
	108629	1	• HEAD, Spin On Type
	109568	1	FILTER ASSEMBLY, Top Mount Type (Not Shown)
	104254	1	• ELEMENT, Filter
	123022	1	• SEAL, Filter Assembly
	123021	1	• COVER, Filter Assembly
	123020	1	• SPRING, Filter Assembly
	122973	1	• CASTING, Aluminum
	121571	1	• SCREW, Set
	122969	1	• BOLT, Washer Combined
	122968	1	• CASING, Filter
	103864	2	HEX HD BOLT, 5/16"-18 X 1"
	103984	2	LOCK NUT, 5/16"-18
15	103124	1	FITTING, Pipe Elbow
16	702540	1	NIPPLE, Pipe
17	103097	1	HOSE, Propane
18	103124	1	FITTING, Pipe Elbow
19	(Ref)	1	FITTING, Elbow (See Fitting Ref Sheet Section 5)
20	(Ref)	1	HOSE, Brake Dump to Tank (See Hose Ref Sheet Section 5)
21	102693	1	CAP c/w GASKET, Filler Breather
	103962	3	SCREW, Machine #10-32 X .5"
22	103215	1	FITTING, Hose Barb
23	102854	2	GEAR CLAMP
24	103032	AR/ft	SUCTION HOSE
25	103124	1	FITTING, Pipe Elbow
26	103962	14	SCREW, Machine #10-32 X .5"
27	108677	1	HYDRAULIC TANK COVER, External Hydraulic Filter
	109267	1	HYDRAULIC TANK COVER, Top Mounted Hydraulic Filter (Not Shown)
28	103855	2	HEX HD BOLT, 1/4"-20 X .500"
	104000	2	LOCK WASHER, 1/4"
29	(Ref)	1	FITTING, (See Fitting Ref Sheet Section 5)
30	(Ref)	1	HOSE, Manifold to Filter (See Hose Ref Sheet Section 5)
31	103962	3	HEX HD BOLT, #10-32 X .5"
32	102929	3	CLAMP, G10 Single
	106694	1	LABEL, Hazardous Fumes
	102926	1	LABEL, Use Vapour Propane Only
	102960	1	LABEL, Use Gasoline Only

Figure 6.6-1, Tube Mounted Outrigger Assembly



Index No.	Skyjack Part No.	Qty.	Description
1	N/A	2	OUTRIGGER FRAME, Tube Mounted SJ10X-10, SJ10X-13 Models
2	106013	4	EXTENSION TUBE, 2 1/2"
3	128068	4	SCREW JACK
	128069	4	JACK HANDLE
	128070	4	JACK HANDLE KNOB
4	106017	4	LOCKING PIN
	103055	4	LOCKING PIN RETAINING CLIP
5	100612	2	LIMIT SWITCH WIRING COVER, SJ10X-07 Models
	100620	2	LIMIT SWITCH WIRING COVER, SJ10X-10, SJ10X-13 Models
6	103855	4	HEX HD BOLT, 1/4"-20 X .5"
	104000	4	LOCK WASHER, 1/4"
	103995	4	FLAT WASHER, 1/4" SAE
7	(Ref)	-	CABLE ASSEMBLY, Switches to Plug
	103256	AR/ft	CABLE, 18/2
	107712	1	• CONNECTOR ASSEMBLY, 5 Pole Male (When Replacing Old Style Connector Also Order Connector PT# 107711)
	103567	1 per	• • HOUSING
	103569	1 per	• • MALE INSERT 4 PIN + GROUND
8	(Ref)	-	CABLE ASSEMBLY, Plug to Panel
	103255	AR/ft	CABLE, 18/4
	107711	1	• CONNECTOR ASSEMBLY, 5 Pole Female (When Replacing Old Style Connector Also Order Connector PT# 107712)
	103568	1 per	• • HOUSING c/w LATCH
	103570	1 per	• • FEMALE INSERT 4 PIN + GROUND

Figure 6.6-2, Bolt-on Mounted Outrigger Assembly



Index No.	Skyjack Part No.	Qty.	Description
1	100664	2	OUTRIGGER FRAME, All SJ10X-10, SJ10X-13, SJ10X-15 Models, EXCEPT SJ107-15, SJ109-17-10, and SJ109-17-13 Models
	100667	2	OUTRIGGER FRAME, SJ107-15, SJ109-17-10 and SJ109-17-13
2	128081	4per	HEX HD BOLT, 5/8"-11 X .750"
3	103998	4per	LOCK WASHER, 5/8"
4	100659	2	OUTRIGGER EXTENSION, Upper Assembly, All SJ10X-10, SJ10X-13, SJ10X-15 Models, EXCEPT SJ107-15, SJ109-17-10, and SJ109-17-13 Models
	100661	2	OUTRIGGER EXTENSION, Upper Assembly, SJ107-15, SJ109-17-10 and SJ109-17-13
5	100657	2	OUTRIGGER EXTENSION, Lower Assembly, All SJ10X-10, SJ10X-13, SJ10X-15 Models, EXCEPT SJ107-15, SJ109-17-10, and SJ109-17-13 Models
	100660	2	OUTRIGGER EXTENSION, Lower Assembly, SJ107-15, SJ109-17-10 and SJ109-17-13
6	100349	4	LOCKING PIN
7	103055	4	LOCKING PIN RETAINING CLIP