

Section 6

Parts Lists

General

The information contained in this section is designed to aid the user in locating and identifying replacement parts. Component parts of various assemblies and sub-assemblies comprising the work platform are illustrated and accompanied by a descriptive parts list. Exploded drawings are used to show relative location of component parts in disassembly order. If a part cannot be found in this section, order by work platform model number and serial number, giving a complete description of the part.

Parts Ordering Information

When ordering replacement parts, the complete part number and description should be used to ensure proper identification and delivery of the desired item. This complete identification should also be used when requesting equipment information.

Method Of Listing

Parts are listed in order according to the reference number shown in the illustration, followed by a full description based upon the "NOUN FIRST" method. That is, the noun name of the part is listed first, then the modifying description information which serves to specifically identify the item. For example: PIN, Clevis. Assemblies or groups are shown at the beginning of a parts list and are identified with the letter references A, B, C, etc. Individual parts in these lists have corresponding letters after their description to identify which assembly or group it is used in. Individual parts

without identifying letters are used in all the assemblies or group shown at the beginning of the parts list. Descriptions preceded with an (•) indicates a serviceable component or attaching hardware for the higher level assembly.

Quantities (Units Per Assy.)

The quantities of each part that are required to complete the assembly. If quantity is (AR), it is understood that the quantity may vary when machine is equipped with certain options. Order quantity as needed.

Hardware

Standard screws, washers, nuts, etc. are not identified by a reference number. These parts are known as COMMON HARDWARE items and appear indented under the major items with which they are used. They should be ordered separately as listed, since they are not component parts of the pieces they attach to.

How To Order Repair Parts

1. Address all orders to your local SKYJACK dealer.
2. Specify model and serial number of the work platform (found on the serial number plate).
3. List the quantity needed.
4. List the length needed (if bulk item).
5. List the part number and description as shown in this manual for each item.
6. Show billing and shipping address and name of individual if possible.
7. Suggest best routing.

CUSTOMER _____

DEALER _____

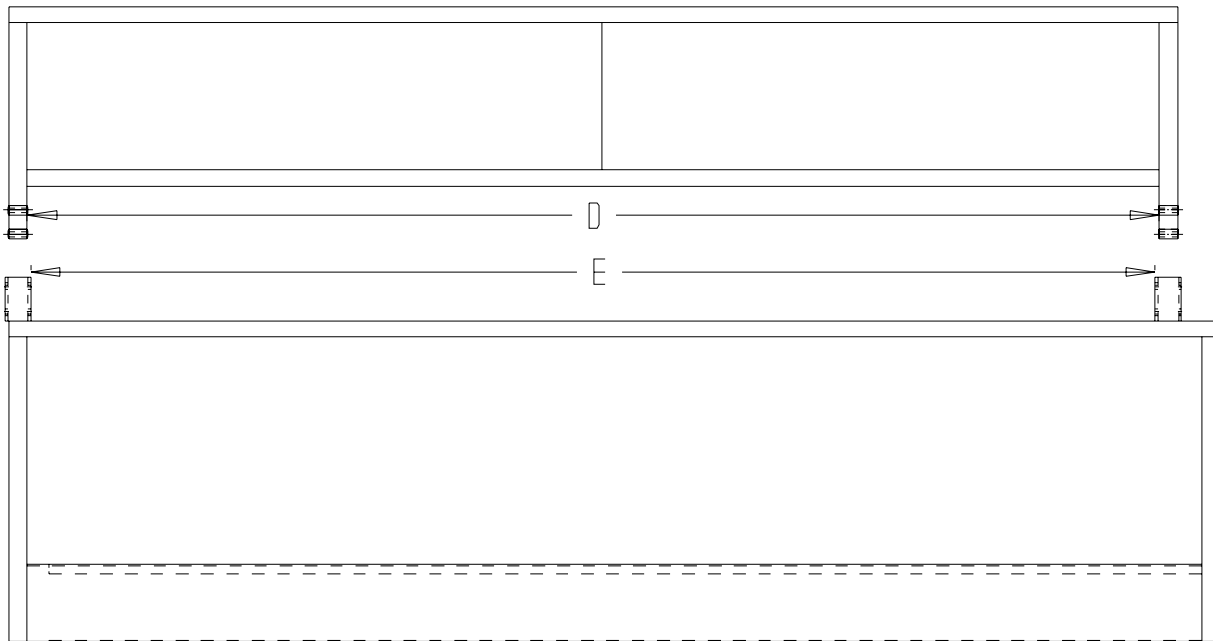
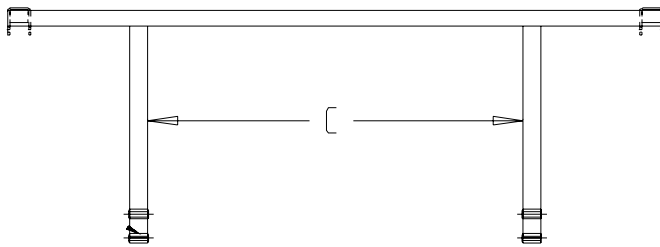
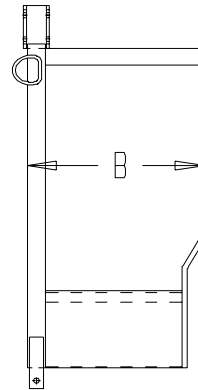
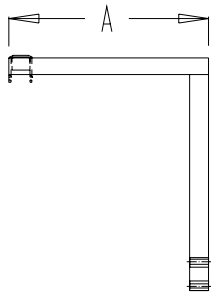
MODEL NUMBER _____

SERIAL NUMBER _____

DATE PURCHASED _____

Use Only Skyjack Authorized Replacement Parts!

RAILING MEASUREMENTS GUIDE



Index No.	Description
A	When measuring the Entry Top Side Rails, measure from end to end. (Machines with full gates.)
B	When measuring the Entry Bottom Side Rails, measure the overall width.
C	When measuring the Entry Top Rail, measure the inside dimension between vertical. (Machines with chain entrances or machines with half gates.)
D	When measuring hinged rails measure the distance between hinges.
E	When measuring hinged rails measure the distance between hinges.

TABLE OF CONTENTS

PLATFORM AND RELATED PARTS

FIGURE 6.1-1	MAIN PLATFORM ASSEMBLY	4-7
FIGURE 6.1-2	ROLL OUT PLATFORM ASSEMBLY	8-11
FIGURE 6.1-3	POWER DECK CYLINDER ASSEMBLY	12
FIGURE 6.1-4	POWER DECK CONTROL BOX ASSEMBLY	13
FIGURE 6.1-5	CRANK OUT PLATFORM ASSEMBLY	14-17
FIGURE 6.1-6	CONTROLL BOX ASSEMBLY	18-23
FIGURE 6.1-7	SKYJACK CONTROLLER ASSEMBLY	24
FIGURE 6.1-8	PQ CONTROLLER ASSEMBLY	25
FIGURE 6.1-9	OEM CONTROLLER ASSEMBLY	26-27
FIGURE 6.1-10	OPTIONAL SAFETY D-RING ASSEMBLY	29

SCISSORS AND RELATED PARTS

FIGURE 6.2-1	SCISSORS STACK ASSEMBLY	30-33
FIGURE 6.2-2	LIFT CYLINDER ASSEMBLY	34-37

BASE AND RELATED PARTS

FIGURE 6.3-1	BASE ASSEMBLY, DRAWER TYPE	38-41
FIGURE 6.3-2	BASE ASSEMBLY, SWING OUT TRAY TYPE	42-45
FIGURE 6.3-3	FRONT AXLE ASSEMBLY, VERTICAL MOUNT	46
FIGURE 6.3-4	REAR AXLE ASSEMBLY, VERTICAL MOUNT	47
FIGURE 6.3-5	FRONT AXLE ASSEMBLY, FLAT MOUNT	48-51
FIGURE 6.3-6	REAR AXLE ASSEMBLY, FLAT MOUNT	52-57
FIGURE 6.3-7	STEER CYLINDER ASSEMBLY	58
FIGURE 6.3-8	BRAKE CYLINDER ASSEMBLY	59

HYDRAULIC TRAY AND COMPONENTS

FIGURE 6.4-1	HYDRAULIC DRAWER ASSEMBLY	60
FIGURE 6.4-2	HYDRAULIC SWING OUT TRAY ASSEMBLY	62-67
FIGURE 6.4-3	ELECTRICAL PANEL ASSEMBLY	68
FIGURE 6.4-4	MAIN MANIFOLD ASSEMBLY	70-71

BATTERY TRAY AND COMPONENTS

FIGURE 6.5-1	BATTERY DRAWER ASSEMBLY	72-73
FIGURE 6.5-2	BATTERY SWING OUT TRAY ASSEMBLY	74
FIGURE 6.5-3	BATTERY CHARGER, LESTER	75
FIGURE 6.5-4	BATTERY CHARGER, MAC 610 and MAC 300	76
FIGURE 6.5-5	BATTERY CHARGER, MAC 9338	77

OUTRIGGERS

FIGURE 6.6-1	OUTRIGGERS, TUBE MOUNTED	78
FIGURE 6.6-2	OUTRIGGERS, BOLT ON TYPE	79

Figure 6.1-1. Main Platform Assembly

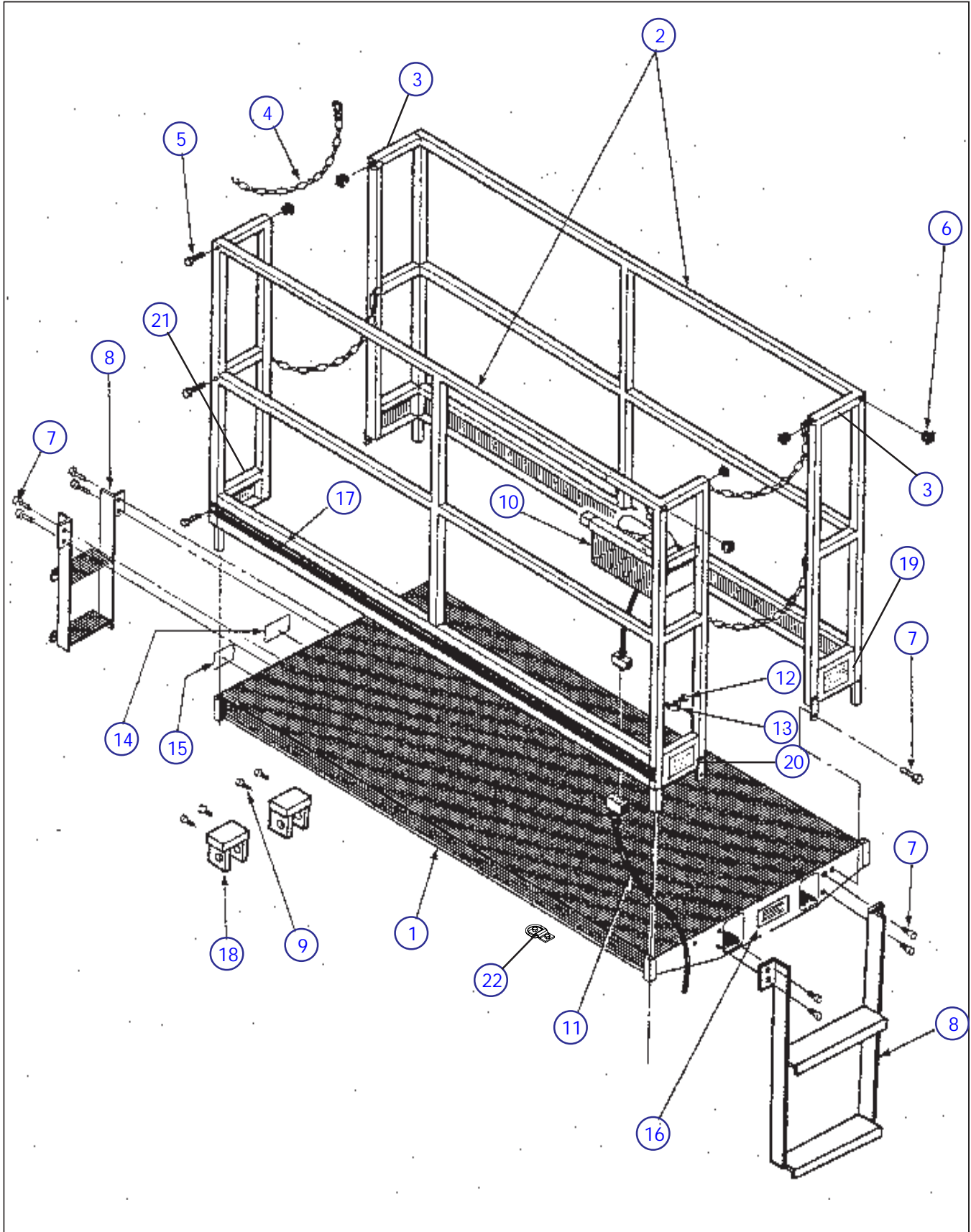


Figure 6.1-1. Main Platform Assembly

Index No.	Skyjack Part No.	Qty.	Description	
1	100229	1	MAIN PLATFORM, SJ005-07 to SJ005.8-07	
	100199	1	MAIN PLATFORM, SJ006-07 to SJ006.5-07	
	100233	1	MAIN PLATFORM, SJ005-10 to SJ005.8-10, SJ009-15-10, SJ009-17-10	
	100215	1	MAIN PLATFORM, SJ006-10 to SJ006.8-10	
	100222	1	MAIN PLATFORM, SJ006-13 to SJ006.8-13, SJ006-15 to SJ007-15	
	100380	1	MAIN PLATFORM, SJ009-15-13, SJ009-17-13	
	128029	1	MAIN PLATFORM, SJ005-07 to SJ005.8-07 c/w 3' Power Deck	
	128030	1	MAIN PLATFORM, SJ006-07 to SJ006.5-07 c/w 3' Power Deck	
	106477	1	MAIN PLATFORM, SJ005-10 to SJ005.8-10, SJ009-15-10, SJ009-17-10 c/w 3' Power Deck	
	128031	1	MAIN PLATFORM, SJ006-10 to SJ006.8-10 c/w 3' Power Deck	
	128032	1	MAIN PLATFORM, SJ006-13 to SJ006.8-13, SJ006-15 to SJ007-15 c/w 3' Power Deck	
	128033	1	MAIN PLATFORM, SJ009-15-13, SJ009-17-13 c/w 3' Power Deck	
	128034	1	MAIN PLATFORM, SJ005-07 to SJ005.8-07 c/w 5' Power Deck	
	128035	1	MAIN PLATFORM, SJ006-07 to SJ006.5-07 c/w 5' Power Deck	
	128036	1	MAIN PLATFORM, SJ005-10 to SJ005.8-10, SJ009-15-10, SJ009-17-10 c/w 5' Power Deck	
	105751	1	MAIN PLATFORM, SJ006-10 to SJ006.8-10 c/w 5' Power Deck	
	105752	1	MAIN PLATFORM, SJ006-13 to SJ006.8-13, SJ006-15 to SJ007-15 c/w 5' Power Deck	
	128037	1	MAIN PLATFORM, SJ009-15-13, SJ009-17-13 c/w 5' Power Deck	
	2	100871	1	SIDE RAILING LH, Solid Replaces 100530 (May Also Require Item #3)
		100735	1	SIDE RAILING LH, Hinged (May Also Require Item #3)
100867		1	SIDE RAILING RH, Solid Replaces 100522 (May Also Require Item #3)	
100728		1	SIDE RAILING RH, Hinged (May Also Require Item #3)	
3		100539	1	END RAIL LH, Solid SJ00X-07 Models
	100540	1	END RAIL LH, Solid SJ00X-10 Models	
	100541	1	END RAIL LH, Solid SJ00X-13 and SJ00X-15 Models	
	100737	1	END RAIL LH, Hinged SJ00X-07 Models	
	100738	1	END RAIL LH, Hinged SJ00X-10 Models	
	100739	1	END RAIL LH, Hinged SJ00X-13 and SJ00X-15 Models	
	100558	1	END RAIL RH, Solid SJ00X-07 Models	
	100559	1	END RAIL RH, Solid SJ00X-10 Models	
	100560	1	END RAIL RH, Solid SJ00X-13 and SJ00X-15 Models	
	100748	1	END RAIL RH, Hinged SJ00X-07 Models	
	100749	1	END RAIL RH, Hinged SJ00X-10 Models	
	100750	1	END RAIL RH, Hinged SJ00X-13 and SJ00X-15 Models	
	4	103357	4	ENTRY CHAIN, Standard Width Entry
5	103862	8	HEX HD BOLT, 1/4"-20 X 2.250"	
	104000	8	LOCK WASHER, 1/4"	
	103995	8	FLAT WASHER, 1/4" SAE	
	103980	8	NUT, 1/4"-20	
	101778	8	RAIL CLAMP	
	6	100702	8	END CAP, 1 1/4" X 1 1/4"
7	103473	4	HEX HD BOLT, 3/8"-16 X 1"	
	103472	8	FLAT WASHER, 3/8" SAE	
	103999	4	LOCK WASHER, 3/8"	
	103978	4	NUT, 3/8"-16	
	8	106732	2	LADDER PLATFORM MOUNTED

Parts list continued on the following page.

Figure 6.1-1. Main Platform Assembly (Continued)

Index No.	Skyjack Part No.	Qty.	Description
Parts list continued from the previous page.			
9	103473	4	HEX HD BOLT, 3/8"-16 X .750"
	103472	8	FLAT WASHER, 3/8" SAE
	103999	4	LOCK WASHER, 3/8"
10	(Ref)		CONTROL BOX ASSEMBLY, (See Control Box Parts List Figure 6.1-6)
11	104170	1	CONTROL CABLE, Three Scissors Machines 31'
	105742	1	CONTROL CABLE, Four Scissors Machines 38'
	106336	1	CONTROL CABLE, Five Scissors Machines 46'
	102518	1	PLUG, Male 10 Pin
	102766	1	PLUG, Female 10 Pin
12	103632	1	HEX HD SELF TAPPING BOLT, 1/4"-14 X .750"
13	102929	1	CLAMP, #10 Single
14	108673	2	LABEL, Main Platform Capacity 750# (See Specification Table Section 5)
**	103269	2	LABEL, Main Platform Capacity 750# (See Specification Table Section 5)
	108667	2	LABEL, Main Platform Capacity 800# (See Specification Table Section 5)
**	122932	2	LABEL, Main Platform Capacity 800# (See Specification Table Section 5)
	117844	2	LABEL, Main Platform Capacity 900# (See Specification Table Section 5)
	108671	2	LABEL, Main Platform Capacity 1000# (See Specification Table Section 5)
**	106505	2	LABEL, Main Platform Capacity 1000# (See Specification Table Section 5)
	103275	1	LABEL, Auxillary Platform Capacity 250# (See Specification Table Section 5)
	103274	1	LABEL, Auxillary Platform Capacity 300# (See Specification Table Section 5)
15	102661	2	LABEL, Warning Electrocutation Hazard
16	108665	2	LABEL, Compliance
17	103125	AR/rl	LABEL, Stripe Blue/White
18	100211	2	PLATFORM MOUNTING BRACKET
19	109985	1	LABEL, 13 Month Inspection
20	106691	1	LABEL, Operator Checklist
21	106693	1	LABEL, Filled Tires (If Equipped)
22	(Ref.)	-	ASSEMBLY, Optional Safety D-Ring (For components, refer to Figure 6.1-10)
<p>** Note: Labels Shown with 250# Extension Deck Capacity</p>			

Figure 6.1-2. Telescoping Platform Assembly

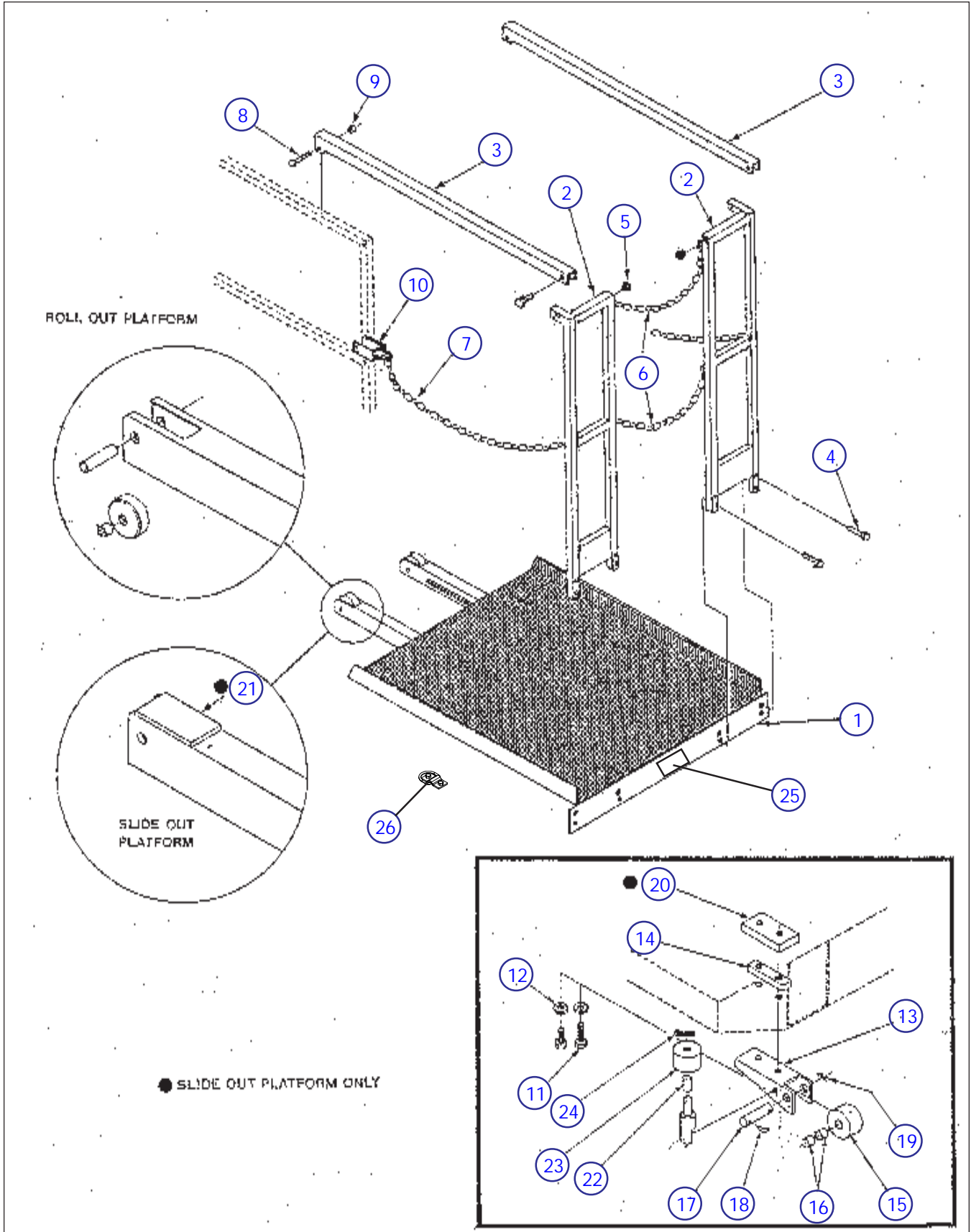


Figure 6.1-2. Telescoping Platform Assembly

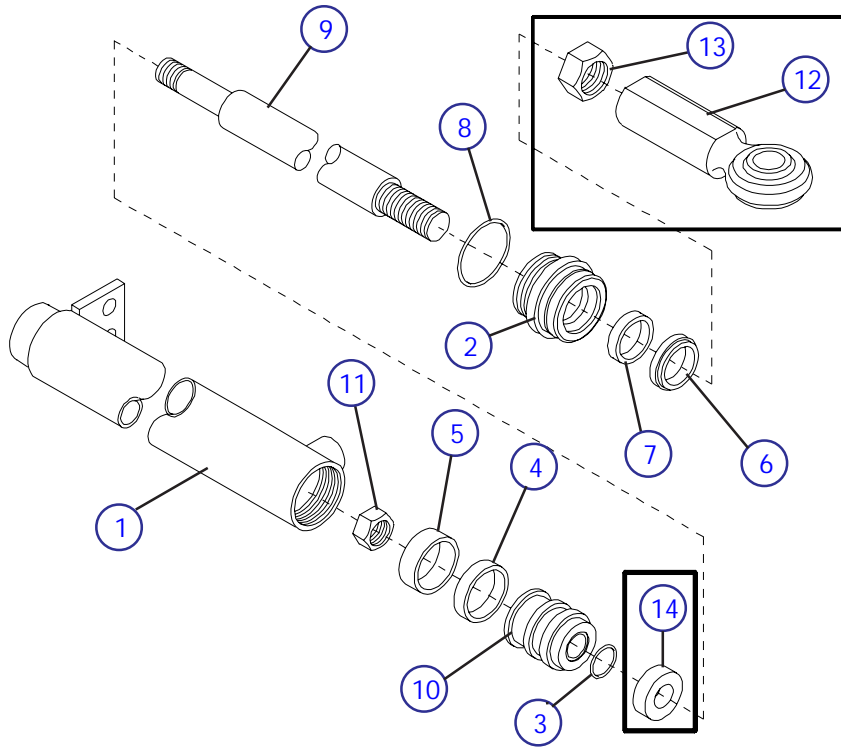
Index No.	Skyjack Part No.	Qty.	Description
1	100467	1	ROLL OUT PLATFORM, All SJ00X-07 Models
	105803	1	ROLL OUT PLATFORM, All SJ00X-10 Models
	105804	1	ROLL OUT PLATFORM, All SJ00X-13 and SJ00X-15 Models
	106480	1	POWER DECK PLATFORM, 3' All SJ00X-10 Models
	106482	1	POWER DECK PLATFORM, 3' All SJ00X-13 and SJ00X-15 Models
	103423	1	POWER DECK PLATFORM, 5' All SJ00X-10 Models
	105354	1	POWER DECK PLATFORM, 5' All SJ00X-13 and SJ00X-15 Models
2	128038	1	END RAIL, LH SJ00X-07 Models
	128039	1	END RAIL, LH SJ00X-10 Models
	128040	1	END RAIL, LH SJ00X-13 Models and SJ00X-15 Models
	128041	1	END RAIL, RH SJ00X-07 Models
	128042	1	END RAIL, RH SJ00X-10 Models
	128043	1	END RAIL, RH SJ00X-13 Models and SJ00X-15 Models
	100487	1	END RAIL, Solid Mid Chain SJ00X-07 Models
	100494	1	END RAIL, Solid Mid Chain SJ00X-10 Models
	100497	1	END RAIL, Solid Mid Chain SJ00X-13 and SJ00X-15 Models
	100752	1	END RAIL, Hinged Mid Chain SJ00X-07 Models
	100762	1	END RAIL, Hinged Mid Chain SJ00X-10 Models
	100763	1	END RAIL, Hinged Mid Chain SJ00X-13 and SJ00X-15 Models
	100872	1	END RAIL, Solid Mid Pipe SJ00X-10 Models
	105698	1	END RAIL, Hinged Mid Pipe SJ00X-07 Models
	105699	1	END RAIL, Hinged Mid Pipe SJ00X-10 Models
	105700	1	END RAIL, Hinged Mid Pipe SJ00X-13 and SJ00X-15 Models
3	100142	2	EXTENSION RAILING, 3'
	107454	2	EXTENSION RAILING, 5'
	103550	6	PAD, Wear
4	103596	8	HEX HD BOLT, 3/8"-16 X 2"
	103472	16	FLAT WASHER, 3/8" SAE
	103999	8	LOCK WASHER, 3/8"
	103978	8	NUT, 3/8"-16
	103473	4	HEX HD BOLT, 3/8"-16 X 1"
	103472	4	FLAT WASHER, 3/8" SAE
	103999	4	LOCK WASHER, 3/8"
	100484	2	RAILING MOUNT PLATE
5	100702	2	END CAP, 1 1/4" X 1 1/4"
6	103357	2	CHAIN, Entry
7	103497	2	CHAIN, Side Protection
8	103865	4	HEX HD BOLT, 5/16"-18 X 2"
9	103984	4	NYLON LOCK NUT, 5/16"-18
10	100293	3	BRACKET, Chian Connector
	103861	2	HEX HD BOLT, 1/4"-20 X 2"
	104000	2	LOCK WASHER, 1/4"
	103980	2	NUT, 1/4"-20
	103911	4	HEX HD BOLT, 1/2"-13 X 1"
12	103470	4	LOCK WASHER, 1/2"
13	100355	1	BRACKET, LH
	100357	1	BRACKET, RH
14	100143	2	BRACKET, Stop Plate
15	100141	2	ROLLER
16	100050	4	BUSHINGS, 3/4"ID X 1"

Parts list continued on the following page.

Figure 6.1-2. Telescoping Platform Assembly (Continued)

Index No.	Skyjack Part No.	Qty.	Description
Parts list continued from the previous page.			
17	100046	2	PIN
18	100121	2	PIN, L
19	103478	2	COTTER PIN, 1/4" Dia. X 1.25"
20	125951	2	SLIDE BLOCK
21	125952	2	SLIDE PAD
22	-	-	NOT REQUIRED WITH ROLLER ITEM 23
23	107579	2	GUIDE ROLLER
24	122071	2	COTTER PIN, 1/8" Dia. X 2"
25	103275	1	LABEL, Auxillary Platform Capacity 250# (See Specification Table Section 5)
	103274	1	LABEL, Auxillary Platform Capacity 300# (See Specification Table Section 5)
26	(Ref.)	-	ASSEMBLY, Optional Safety D-Ring (For components, refer to Figure 6.1-10)
	120259	2	POWER DECK CYLINDER, 3' (Not Shown) (Ref Parts List Figure 6.1-3)
	120255	2	POWER DECK CYLINDER, 5' (Not Shown) (Ref Parts List Figure 6.1-3)
	115592	1	POWER DECK CONTROL BOX, (Not Shown) (Ref Parts List Figure 6.1-4)

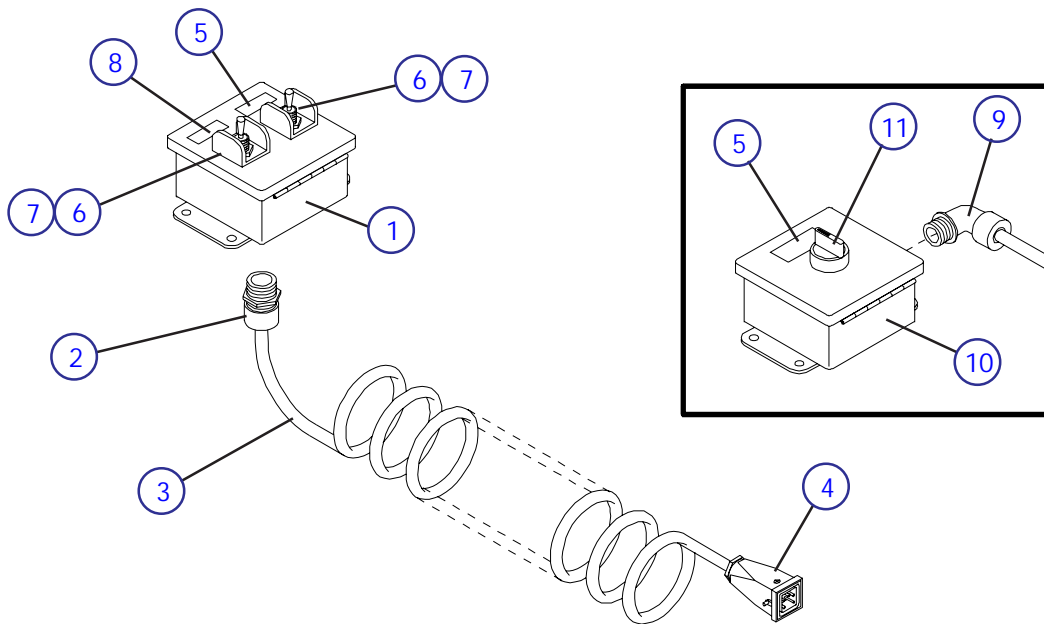
Figure 6.1-3. Powered Extension Platform Cylinder Assembly



Index No.	Skyjack Part No.	Qty.	Description
A	120259	2	CYLINDER ASSEMBLY, 3 Ft. extension platform
B	120255	2	CYLINDER ASSEMBLY, 5 Ft. extension platform
1	120257	1	• WELDMENT, Cylinder barrel (3' extension platform), A
	120249	1	• WELDMENT, Cylinder barrel (5' extension platform), B
2	120254	1	• GLAND, Cylinder end
*3	110976	1	• O-RING, Piston
*4	103825	1	• SEAL, Piston
*5	106452	1	• RING, Piston wear
*6	106449	1	• WIPER, Rod
*7	108798	1	• SEAL, Rod
*8	120436	1	• O-RING, Gland
9	117970	1	• ROD, Piston (3' extension platform), A
	117927	1	• ROD, Piston (5' extension platform), B
10	117942	1	• PISTON, Cylinder
11	103830	1	• NUT, Lock 5/8-11 grade C
12	103420	1	END, Spherical Bearing
13	106450	1	NUT, Jam 3/4"-16
14	103822	1	SPACER, Used on Old Piston PT# 106457 Only
-	103424	2	PIN, Cylinder Mount (Not Shown)
-	100759	4	RETAINING RING, (Not Shown)
-	100819	4	FLAT WASHER, 3/4" Dia Nom
	107396	1	KIT, Seal repair, * - Part of Seal Repair Kit,107396

NOTE: If Replacing Older Cylinder Component Item Must Replace Cylinder

Figure 6.1-4. Powered Extension Platform Control Box Assembly



MA-SJII-31B

Index No.	Skyjack Part No.	Qty.	Description
A	115592	1	POWERDECK CONTROL BOX ASSEMBLY, (Toggle Switch Controls)
B	N/A		POWERDECK CONTROL BOX ASSEMBLY, (Rotary Switch Controls)
1	115539	1	• BOX, Control, A
2	103041	1	• STRAIN RELIEF, Straight 1/2" , A
3	106401	1	• CORD, Coiled 18/3
4	107712	1	• CONNECTOR ASSEMBLY, Male
	103567	-	• • HOUSING
	103569	-	• • MALE INSERT, 4 Pin + Grnd
			(When Replacing Round Connector Also Order Connector PT# 107711)
	107711	1	• CONNECTOR ASSEMBLY, Female
	103568	-	• • HOUSING c/w LATCH
	103570	-	• • FEMALE INSERT, 4 Pin + Grnd
5	108328	1	• LABEL, Platform extend/retract
6	102853	2	• SWITCH, Toggle, A
7	111181	2	• GUARD, Toggle switch, A
8	115594	1	• LABEL, Enable, A
9	103035	1	• STRAIN RELIEF, Elbow 90° 1/2", B
10	102976	1	• BOX, Control, B
11	(Ref.)	1	• SWITCH ASSEMBLY, Platform extend/retract, B
	102837	1	• • HEAD, Selector switch
	103100	1	• • BASE, Contact
	103141	1	• • BLOCK, N.O. Contact
11	(Ref.)	1	• SWITCH ASSEMBLY, Enable (If Equipped), B
	102837	1	• • HEAD, Push Button Green
	103100	1	• • BASE, Contact
	103141	1	• • BLOCK, N.O. Contact
	117188	1	POWER DECK CONTROL BOX MOUNTING BRACKET, (Not Shown)

Figure 6.1-5. Crank-out Platform Assembly

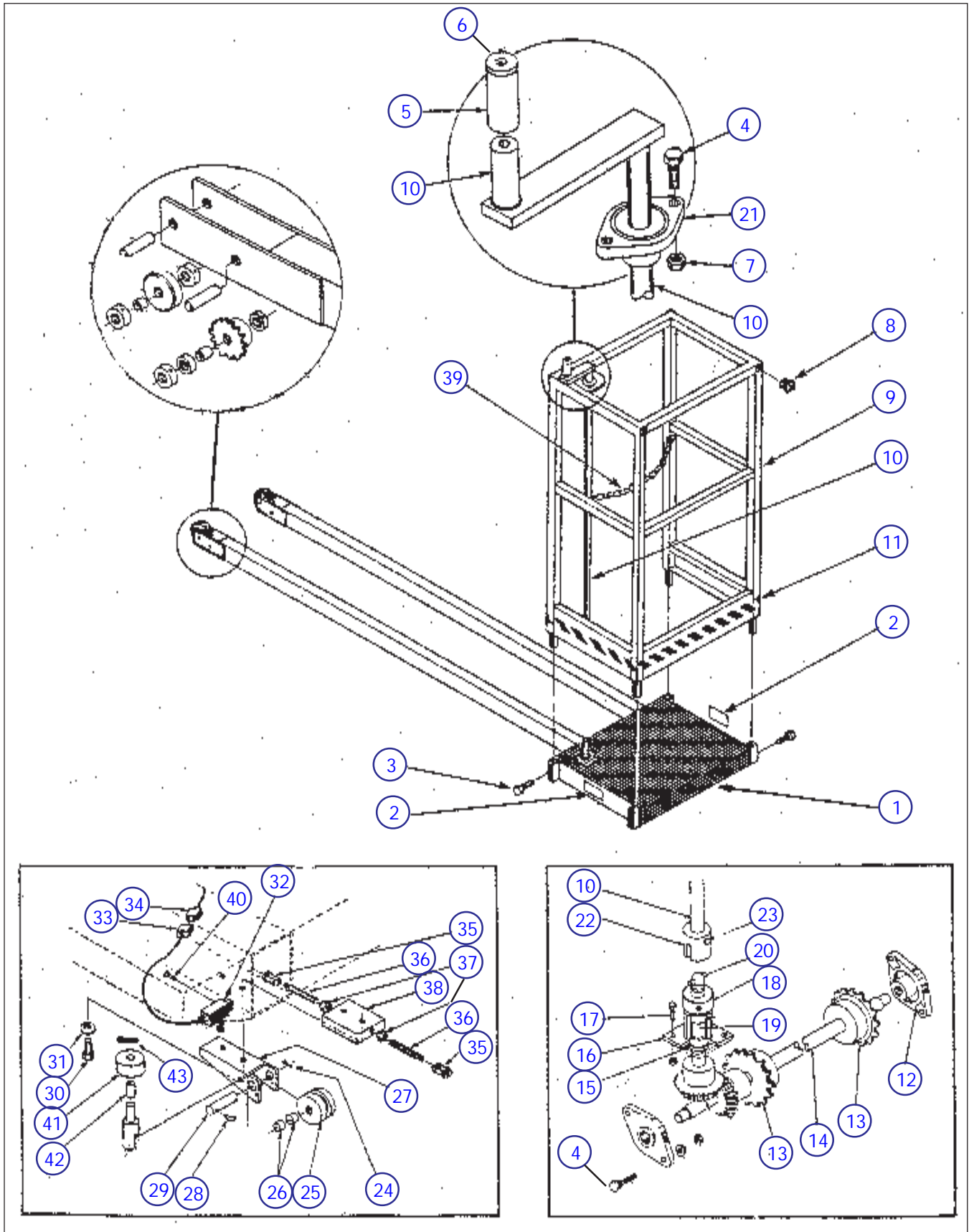


Figure 6.1-5. Crank-out Platform Assembly

Index No.	Skyjack Part No.	Qty.	Description
1	100152	1	CRANK OUT PLATFORM, 6ft
	100682	1	CRANK OUT PLATFORM, 8ft
2	103275	1	LABEL, Auxillary Platform Capacity 250# (See Specification Table Section 5)
	103274	1	LABEL, Auxillary Platform Capacity 300# (See Specification Table Section 5)
3	103473	4	HEX HD BOLT, 3/8"-16 X 1
	103999	4	LOCK WASHER, 3/8"
4	103857	2	HEX HD BOLT, 1/4"-20 X 1"
5	100761	1	CRANK HANDLE
6	100760	1	WASHER
	100759	1	SNAP RING
7	103980	2	NUT, 1/4"-20
	104000	2	LOCK WASHER, 1/4"
8	100702	4	END CAP, 1 1/4" X 1 1/4"
9	100010	1	RAILING, 6ft
	100688	1	RAILING, 8ft
10	100755	1	CRANK and SHAFT
11	102975	AR/rl	LABEL, Caution Stripe
12	103350	2	BEARING, 5/8" Dia. Bearing
	100398	2	BEARING, 3/4" Dia. Bearing
13	103238	2	SPROCKET, 3/4"ID
14	N/A	1	SHAFT, 5/8"Dia Bearing Surface
	100396	1	SHAFT, 3/4"Dia Bearing Surface
15	100391	2	BUSHING
16	100388	1	HOUSING
17	103857	2	HEX HD BOLT. 1/4"-20 X 1"
	103980	2	NUT, 1/4"-20
18	300278	1	COLLAR, 3/4"ID
19	100392	1	PINION SHAFT
20	100395	2	ROLL PIN, 1/4" Dia. X 1.375"
21	100398	1	BEARING, 3/4" Dia.
22	100151	1	COUPLING SLEEVE
23	100150	1	SPRING PIN, 3/16"Dia X 1.250"
24	103478	2	COTTER PIN, 1/4" Dia. X 1.250"
25	100354	2	ROLLER, Grooved
26	100050	4	BUSHING, 3/4"ID X 1"
27	100355	1	BRACKET, LH
	100357	1	BRACKET, RH
28	100121	2	PIN, L
29	100046	2	PIN, Wheel
30	103911	4	HEX HD BOLT. 1/2"-13 X 1"
31	103470	4	LOCK WASHER, 1/2"
32	(Ref)	1	LIMIT SWITCH, Cutout
	102847	1	• LIMIT SWITCH BODY
	102882	1	• HEAD, Arm
	103224	1	• ACTUATOR, Lever c/w Roller
	103036	1	• STRAIN RELIEF

Parts list continued on the following page.

Figure 6.1-5. Crank-out Platform Assembly (Continued)

Index No.	Skyjack Part No.	Qty.	Description
Parts list continued from the previous page.			
33	103256 107712 103567 103569	AR/ft 1 1 1	CABLE 18/2, Limit Switch to Plug PLUG, Male • HOUSING • INSERT, Male 4 Pin + grd (When Replacing Old Style Connector Also Order Connector PT# 107711)
34	103256 107711 103568 103570	AR/ft 1 1 1	CABLE 18/2, Plug to Control Box PLUG, Female • HOUSING, c/w Latch • INSERT, Female 4 Pin + grd (When Replacing Old Style Connector Also Order Connector PT# 107712)
35	103692 102514	AR/ft 4	CHAIN, #35 MASTER LINK, #35
36	106304 106305	2 2	CHAIN TENSIONER, LH Thread CHAIN TENSIONER, RH Thread
37	103978 128029	2 2	NUT, 3/8"-16 RH NUT, 3/8"-16 LH
38	100000	2	BLOCK, Chain Tensioning
39	103798	1	CHAIN, Entry
40	103963	2	MACHINE SCREW, #10-32 X 1.5"
41	107579	2	GUIDE ROLLER
42	-	-	NOT REQUIRED WITH ROLLER ITEM 41
43	122071	2	COTTER PIN, 1/8" Dia. X 2"

Figure 6.1-6. Control Box Assembly

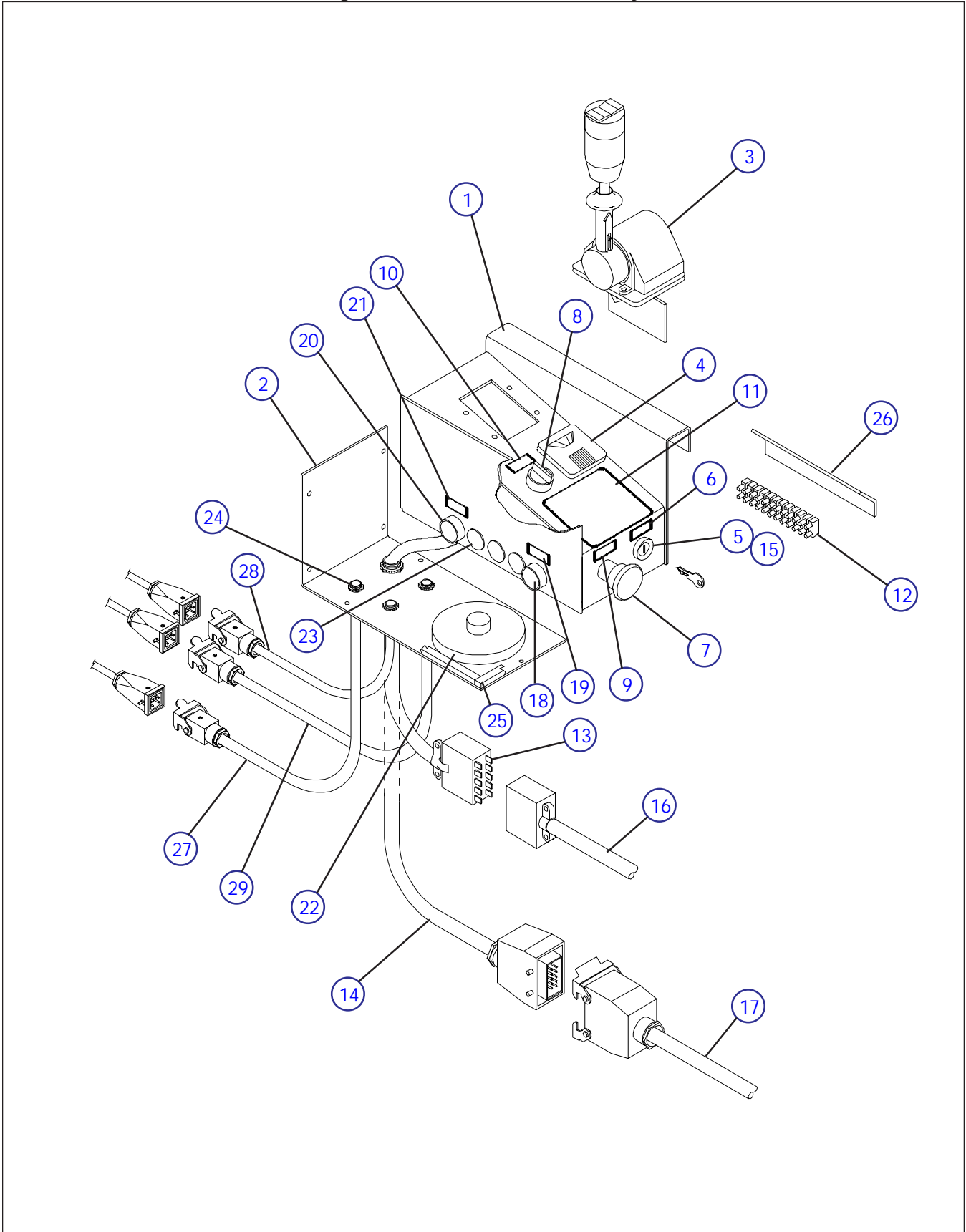


Figure 6.1-6. Control Box Assembly

Index No.	Skyjack Part No.	Qty.	Description
A	104491	-	CONTROL BOX ASSEMBLY - Standard
B	106109	-	CONTROL BOX ASSEMBLY - With Horn
C	114557	-	CONTROL BOX ASSEMBLY - International W/Horn
D	114558	-	CONTROL BOX ASSEMBLY - EE-Rated
1	108692	1	• WELDMENT, Control Box (Replaces 100886)
2	108703	1	• COVER, Bottom, A, D (Replaces 100148)
	108704	1	• COVER, Bottom, B, C (Replaces 100621)
	104607	11	• • SCREW, Self-tapping #8-32 x 1/2" lg.
3	103334	1	• CONTROLLER ASSEMBLY, (Ref Controller Parts List Figure 6.1-7)
	103957	4	• • SCREW, Machine #8-32 x 1/2" lg.
4	103240	1	• INDICATOR, Battery Charge
5	102752	1	• SWITCH, Key Select
	104325	1	• • KEY, Select Switch
6	102599	1	• LABEL, Lift/Off/dDive, A, B, D
	108333	1	• LABEL, Lift/Off/Drive, C
7	(Ref.)	1	• SWITCH ASSEMBLY, Emergency Stop
	100149	1	• • WASHER, Flat
	102769	1	• • HEAD, Stop Switch
	103100	1	• • BASE, Contact
	103225	1	• • BLOCK, N.C. Contact
8	(Ref.)	1	• SWITCH ASSEMBLY, Up/Down Selector
	102837	1	• • HEAD, Selector Switch
	103100	1	• • BASE, Contact
	103141	2	• • BLOCK, N.O. Contact
9	102627	1	• LABEL, Emergency Stop, A, B, D
	105351	1	• LABEL, Emergency Stop, C
10	102657	1	• LABEL, Up/Off/Down, A, B, D
	108328	1	• LABEL, Up/Off/Down, C
11	106704	1	• LABEL, Operator Warning
12	103012	1	• BLOCK, Terminal
	103955	2	• • SCREW Machine #6-32 x 3/4" lg.
	103985	2	• • NUT, Machine #6-32
13	104172	1	• CORD ASSEMBLY, Control Box, A, B
	102888	AR/ft	• • CABLE, 16/10 x 27" lg.
	102766	1	• • PLUG, 10 Pin Cable
	103365	1	• • CONNECTOR, Control Box 1/2"
14	114547	1	• CORD ASSEMBLY, Control Box, C, D
	102888	AR/ft	• • CABLE, 16/10 x 27" lg.
	107778	1	• • CONNECTOR ASSEMBLY, 10 Pole Male (When Replacing Old Style Connector Also Order Connector PT# 107777)
	103566	1	• • • HOUSING
	103571	1	• • • MALE INSERT, 10 Pin
	107777	1	• • CONNECTOR ASSEMBLY, 10 Pole Female
	103563	1	• • • HOUSING
	103572	1	• • • FEMALE INSERT, 10 Pin
15	102921	AR	• DIODE, 6 Amp

Parts list continued on the following page.

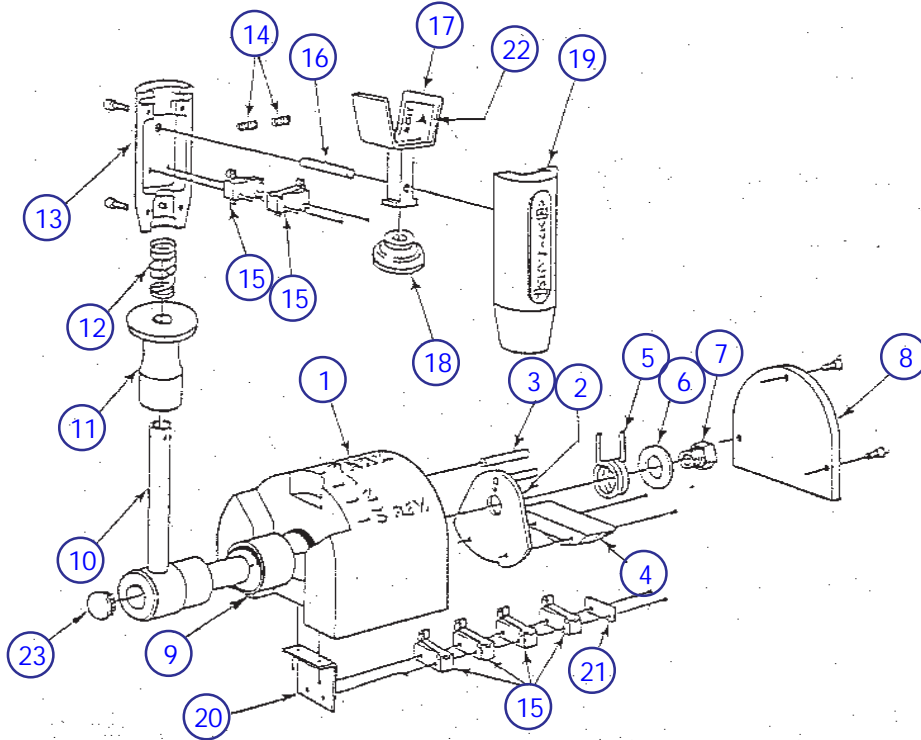
Figure 6.1-6. Control Box Assembly (Continued)

Index No.	Skyjack Part No.	Qty.	Description
			Parts list continued from the previous page.
16	104170	1	CORD ASSEMBLY, Scissor Arm, A, B (For 3 Scissors Machines)
	102888	1	• CABLE, 16/10 x 372" lg.
	102518	1	• SOCKET, Female 10 Pin
	102766	1	• PLUG, Male 10 Pin
	105742	1	CORD ASSEMBLY, Scissor Arm, A, B (For 4 Scissors Machines)
	102888	1	• CABLE 16/10 x 456" lg.
	102518	1	• SOCKET, Female 10 Pin
	102766	1	• PLUG, Male 10 Pin
	106336	1	CORD ASSEMBLY, Scissor Arm, A, B (For 5 Scissors Machines)
	102888	1	• CABLE, 16/10 x 552" lg.
	102518	1	• SOCKET, Female 10 Pin
17	102766	1	• PLUG, Male 10 Pin
	114549	1	CORD ASSEMBLY, Scissor Arm, C, D (For 3 Scissors Machines) (When Replacing Old Style Connectors Also Order Connector PT# 107777 and PT# 107778)
	102888	AR/ft	• CABLE, 16/10 x 372" lg
	107777	1	• CONNECTOR ASSEMBLY, 10 Pole Female
	103563	1	• • HOUSING
	103572	1	• • FEMALE INSERT, 10 Pin
	107778	1	• CONNECTOR ASSEMBLY, 10 Pole Male
	103566	1	• • HOUSING
	103571	1	• • MALE INSERT, 10 Pin
	114550	1	CORD ASSEMBLY, Scissor Arm, C, D (For 4 Scissors Machines) (When Replacing Old Style Connectors Also Order Connector PT# 107777 and PT# 107778)
	102888	AR/ft	• CABLE, 16/10 x 456" lg.
	107777	1	• CONNECTOR ASSEMBLY, 10 Pole Female
	103563	1	• • HOUSING
	103572	1	• • FEMALE INSERT, 10 Pin
	107778	1	• CONNECTOR ASSEMBLY, 10 Pole Male
	103566	1	• • HOUSING
	103571	1	• • MALE INSERT, 10 Pin
	114551	1	CORD ASSEMBLY, Scissor Arm, C, D (For 5 Scissors Machines) (When Replacing Old Style Connectors Also Order Connector PT# 107777 and PT# 107778)
	102888	AR/ft	• CABLE, 16/10 x 552" lg.
107777	1	• CONNECTOR ASSEMBLY, 10 Pole Female	
103563	1	• • HOUSING	
103572	1	• • FEMALE INSERT, 10 Pin	
107778	1	• CONNECTOR ASSEMBLY, 10 Pole Male	
103566	1	• • HOUSING	
103571	1	• • MALE INSERT, 10 Pin	
18	(Ref.)	1	• SWITCH ASSEMBLY, Lift Enable Pushbutton (If Equipped)
	108854	1	• • HEAD, Pushbutton Head (Green)
	103100	1	• • BASE, Contact
	103141	1	• • BLOCK, N.O. Contact
19	108855		• LABEL, Lift Enable
			Parts list continued on the following page.

Figure 6.1-6. Control Box Assembly (Continued)

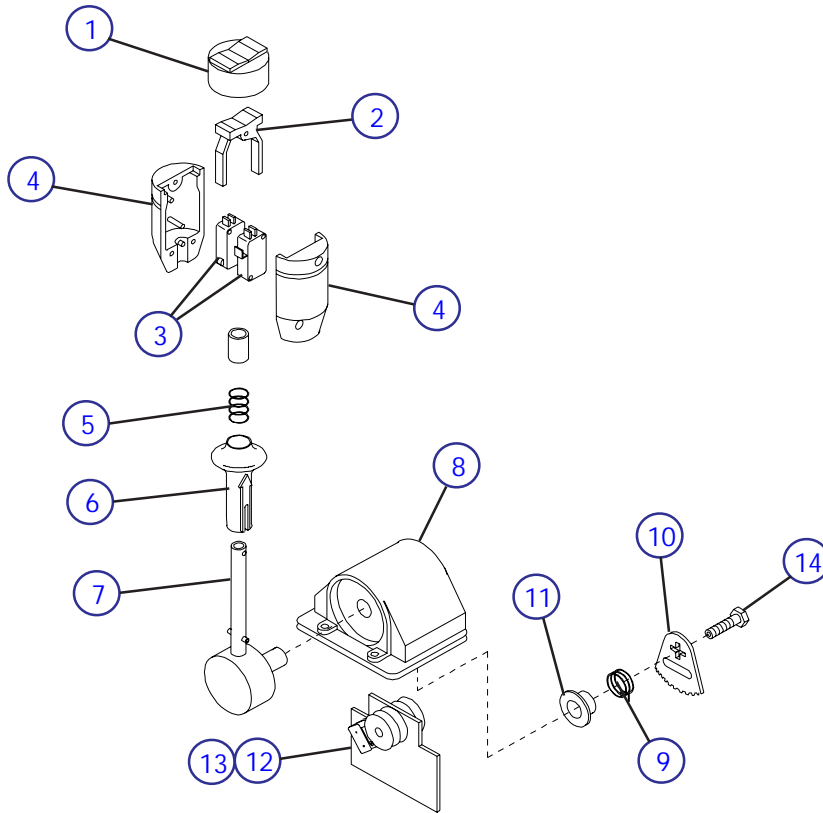
Index No.	Skyjack Part No.	Qty.	Description
			Parts list continued from the previous page.
20	(Ref.)	1	• SWITCH ASSEMBLY, Horn Pushbutton, B, C
	102851	1	• • HEAD, Pushbutton Switch (Black)
	103100	1	• • BASE, Contact
	103141	1	• • BLOCK, N.O. Contact
21	102467	1	• LABEL, Horn, B
	105352	1	• LABEL, Horn, C
22	102860	1	• HORN, 24 Volt
23	105867	AR	• PLUG, Snap-in, (Replaces 102956)
24	103041	1	• STRAIN RELIEF, Main Cord
	103036	3	• STRAIN RELIEF, Cord 1/2"
25	103628	AR/ft	SEAL, Rubber 44" lg., D
26	113451	1	STRIP, Terminal Mount
			Items 27 thru 29 are for Machines with Powered Extension Platforms.
27	(Ref.)	1	CABLE ASSEMBLY, Powered Platform Control Box
	103257	AR/ft	• CABLE, 18/3 x 27" lg.
	107711	1	• CONNECTOR ASSEMBLY, 5 Pole Female (When Replacing Old Style Connector Also Order Connector PT# 107712)
	103568	1 per	• • HOUSING c/w LATCH
	103570	1 per	• • FEMALE INSERT 4 PIN + GROUND
	107712	1	• CONNECTOR ASSEMBLY, 5 Pole Male
	103567	1 per	• • HOUSING
	103569	1 per	• • MALE INSERT 4 PIN + GROUND
28	(Ref.)	1	CABLE ASSEMBLY, Valve Manifold
	103257	AR/ft	• CABLE, 18/3 x 27" lg.
	107711	1	• CONNECTOR ASSEMBLY, 5 Pole Female (When Replacing Old Style Connector Also Order Connector PT# 107712)
	103568	1 per	• • HOUSING c/w LATCH
	103570	1 per	• • FEMALE INSERT 4 PIN + GROUND
	107712	1	• CONNECTOR ASSEMBLY, 5 Pole Male
	103567	1 per	• • HOUSING
	103569	1 per	• • MALE INSERT 4 PIN + GROUND
29	(Ref.)	1	• CABLE ASSEMBLY, Limit Switch
	103257	AR/ft	• CABLE, 18/3 x 27" lg.
	107711	1	• CONNECTOR ASSEMBLY, 5 Pole Female (When Replacing Old Style Connector Also Order Connector PT# 107712)
	103568	1 per	• • HOUSING c/w LATCH
	103570	1 per	• • FEMALE INSERT 4 PIN + GROUND
	107712	1	• CONNECTOR ASSEMBLY, 5 Pole Male
	103567	1 per	• • HOUSING
	103569	1 per	• • MALE INSERT 4 PIN + GROUND

Figure 6.1-7, Skyjack Controller



Index No.	Skyjack Part No.	Qty.	Description
	N/A	-	CONTROLLER ASSEMBLY
1	101692	1	• JOYSTICK HOUSING
2	100128	1	• CAM PLATE, with Pin
3	100126	1	• PIN
4	100369	1	• CAM BLOCK
5	100133	1	• TORSION SPRING
6	100135	1	• WASHER
7	100136	1	• BOLT, Modified
8	100370	1	• HOUSING COVER
9	102890	1	• BUSHING
10	104316	1	• SHAFT AND STEM
11	100368	1	• LOCK SLEEVE
12	100137	1	• SPRING, for Lock Sleeve
13	100122	1	• HANDLE HALF, Drilled
14	102777	2	• SPRING, Steer Switch
15	102768	6	• MICROSWITCH
16	100126	1	• PIN
17	100123	1	• STEER SWITCH
18	103180	1	• HANDLE SEAL
19	100127	1	• HANDLE HALF, Tapped
20	100131	1	• SWITCH BRACKET
21	100134	1	• SWITCH CLAMP PLATE
22	102676	1	• LABEL, Steer
23	103019	1	• HOLE PLUG

Figure 6.1-8, PQ Controller Assembly



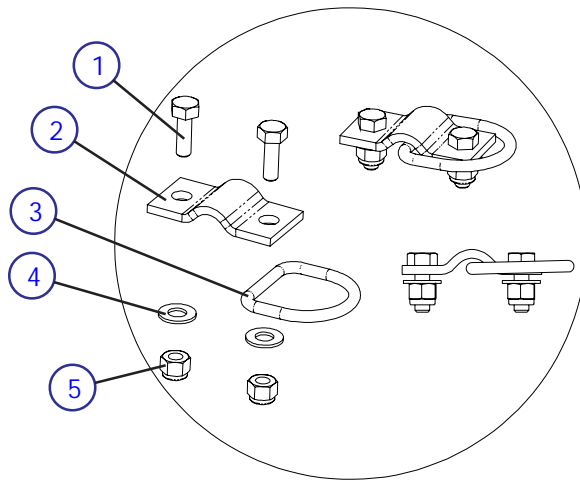
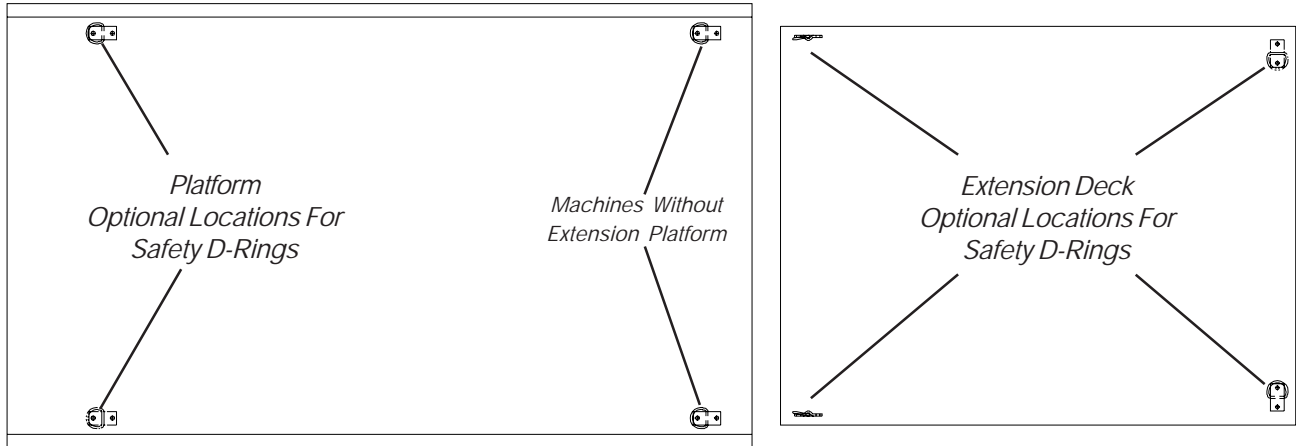
MA-SJM-13

Index No.	Skyjack Part No.	Qty	Description
	103334	1	CONTROLLER ASSEMBLY
1	105735	1	• CAP, Elastic
2	105734	1	• ACTUATOR, Rocker
3	105733	2	• SWITCH, Directional
4	105738	2	• KNOB HALF
5	105737	1	• SPRING, Compression
6	105736	1	• SLIDE LOCK
7	105378	1	• HANDLE EXTENSION
8	106729	1	• HOUSING
9	106730	1	• SPRING, Handle return
10	106725	1	• RATCHET
11	106726	1	• BUSHING, Spring
12	106092	1	• CIRCUIT BOARD ASSEMBLY
13	102768	4	• SWITCH W/ACTUATOR
14	106731	1	• SCREW, Hollow

Figure 6.1-9, OEM Controller Assembly

Index No.	Skyjack Part No.	Qty.	Description
A	123995	-	CONTROLLER ASSEMBLY, Enable Joystick
1	122849	1	• HANDLE ASSEMBLY
2	122873	1	• • LEVER, Trigger
3	122872	1	• • SWITCH, Push button
4	122874	1	• • CAP, Rubber
5	122875	1	• • HANDLE, Front portion
6	122876	1	• • ROCKER ASSEMBLY
7	122877	2	• • SWITCH ASSEMBLY, Micro
8	122878	1	• • HANDLE, Back half
9	122879	4	• • SCREW, Joystick handle
10	122959	1	• • SCREW, Joystick lever
11	122960	2	• • SCREW, set
12	122961	1	• • COUPLING, 8mm
13	122962	1	• • COUPLING, 10mm
14	122963	1	• • NUT, Push button
15	122964	1	• • NUT, Joystick lever
16	122965	1	• • FITTING, O-Ring
17	122846	2	• SCREW
18	122847	2	• WASHER
19	122859	1	• GASKET
20	122848	1	• BOOT
21	122861	1	• BASE
22	122850	2	• SPACER
23	122862	1	• CAM
24	122840	1	• CONNECTOR ASSEMBLY, Male 9 pole
	116993	1	• • HOUSING, Connector Male 9 pole
	116990	9	• • PIN, Female wire
25	122841	1	• CONNECTOR ASSEMBLY, Female 9 pin
	122839	1	• • HOUSING, Connector Female 9 pin
	116989	9	• • PIN, Male wire
26	122870	2	• WASHER
27	122863	2	• SCREW
28	122866	2	• SCREW
29	122864	1	• CAM
30	122865	2	• SPACER
31	122869	4	• MICROSWITCH
32	124822	1	• SHAFT, Modified Joystick
33	124002	1	ADAPTOR, Joystick
34	124031	2	SCREW, Machine Flat Hd #10-32 X .625"
35	124029	1	GASKET, Joystick
36	124153	1	JOYSTICK GUARD
37	120094	6	BOLT, Machine #10-32 X .625"
	104185	6	WASHER, Lock #10 Nom.
	104694	2	WASHER, Flat #10 SAE
	104003	2	NUT, Machine #10-32
38	127222	1	MODULE, Spike Supression
	124080	1	LABEL, Enable joystick pictorial
	123488	1	LABEL, Operating instructions
			Refer to Section 5 OEM Joystick Installation Procedure for Joystick replacement Instructions.

Figure 6.1-10. Optional Safety D-Ring Assembly



10163AA

Index No.	Skyjack Part No.	Qty.	Description
A	125584	-	SAFETY D-RING KIT
1	103473	2	• BOLT, Hex head 3/8-16 x 1" grade 5
2	113122	1	• BRACKET, Safety ring
3	114989	1	• D-RING, Safety
4	103472	2	• WASHER, Flat 3/8"
5	104606	2	• NUT, Hex 3/8-16 grade 5 nylon lock

Figure 6.2-1, Scissors Assembly

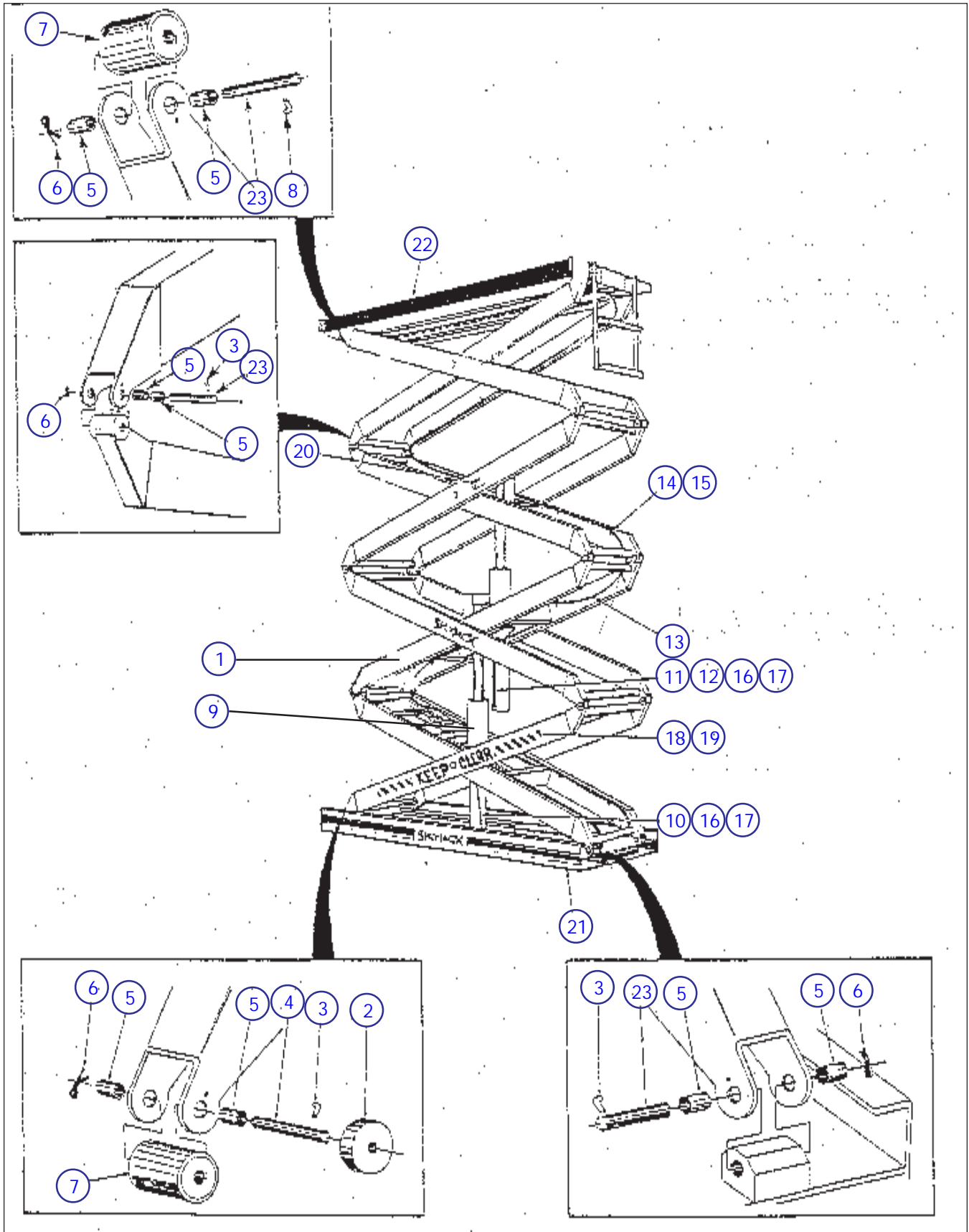


Figure 6.2-1, Scissors Assembly

Index No.	Skyjack Part No.	Qty.	Description
1	128003		STACK, SJ005-07 to SJ005.8-07
	128004		LEVEL 1
	128005		LEVEL 2
	128006		LEVEL 3
	128007		STACK, SJ006-07 to SJ006.5-07
	128004		LEVEL 1
	128008		LEVEL 2
	128009		LEVEL 3
	128010		LEVEL 4
	128011		STACK, SJ005-10
	128012		LEVEL 1
	128013		LEVEL 2
	128014		LEVEL 3
	128015		STACK, SJ005.5-10 to SJ005.8-10
	128016		LEVEL 1
	128017		LEVEL 2
	128014		LEVEL 3
	128018		STACK, SJ006-10 to SJ006.8-10, SJ006.5-13 to SJ006.8-13
	128016		LEVEL 1
	128019		LEVEL 2
	128020		LEVEL 3
	128021		LEVEL 4
	128022		STACK, SJ006-13, SJ006-15 to SJ007-15
	128012		LEVEL 1
	128013		LEVEL 2
	128020		LEVEL 3
	128021		LEVEL 4
	128023		STACK, SJ009-XX-XX
128024		LEVEL 1	
128025		LEVEL 2	
128026		LEVEL 3	
128027		LEVEL 4	
128028		LEVEL 5	
2	100139	2	RETAINING ROLLER
3	100121	AR	PIN, Long L
	100825	AR	PIN, Straight
4	100047	2	RETAINING ROLLER PIN
5	100050	AR	BUSHING, 3/4"ID X 1"
6	103478	AR	COTTER PIN, 1/4" X 1 1/4"
7	100048	4	SCISSORS ROLLER
8	100119	2	L PIN, Short
			Parts list continued on the following page.

Figure 6.2-1, Scissors Assembly (Continued)

Index No.	Skyjack Part No.	Qty.	Description
Parts list continued from the previous page.			
9	(Ref)	AR	LIFT CYLINDER ASSEMBLY (See Lift Cylinder Parts List Figure 6.2-2)
10	(Ref)	1	HOSE, Manifold to First Cylinder (Reference Hose List Section 5)
11	(Ref)	1	HOSE, Manifold to Second Cylinder (Reference Hose List Section 5)
12	(Ref)	1	HOSE, Manifold to Third Cylinder (Reference Hose List Section 5)
13	104170	1	CONTROL CABLE, Three Scissors Models 31'
	102488	1	CONTROL CABLE, Four Scissors Models 38'
	106336	1	CONTROL CABLE, Five Scissors Models 46'
	102518	1	PLUG, Male 10 Pin
	102766	1	PLUG, Female 10 Pin
14	102929	AR	CLIP, #10 Single
15	103962	AR	SCREW, Machine #10-32 X .5"
16	103024	AR	CLIP, #8 Single
	102972	AR	CLIP, #8 Double
	103078	AR	CLIP, #10 Double
17	103856	1 per	HEX HD BOLT, 1/4"-20 X .750"
	104000	1 per	LOCK WASHER, 1/4"
	103995	1 per	FLAT WASHER, 1/4"
18	102975	AR/roll	LABEL, Warning Stripe
19	106760	2	LABEL, Keep
	106761	2	LABEL, Clear
20	102894	2	LABEL, Do Not Lift
21	(Ref)	1	BASE ASSEMBLY, (See Base Assembly Parts List Figure 6.3-2)
22	(Ref)	1	MAIN PLATFORM ASSEMBLY, (See Platform Assembly Parts List Figure 6.1-1)
23	100046	AR	PIN, Scissors

Figure 6.2-2, Lift Cylinder Assembly

Index No.	Skyjack Part No.	Qty.	Description
	100303	1	LIFT CYLINDER ASSEMBLY, Level One SJ005-XX Model and Level Three SJ009-XX-XX Model
	100304	1	LIFT CYLINDER ASSEMBLY, Level One SJ005.8-XX Models Only
	100305	1	LIFT CYLINDER ASSEMBLY, Level One All Models Except SJ005-XX
	100306	1	LIFT CYLINDER ASSEMBLY, Level Two
1	128044	1 per	CYLINDER BARREL, for Part# 100303
	128057	1 per	CYLINDER BARREL, for Part# 100304
	128058	1 per	CYLINDER BARREL, for Part# 100305
	128059	1 per	CYLINDER BARREL, for Part# 100306
2	128060	1 per	PISTON
3	128061	1 per	END CAP
	116405	AR	BREATHER, 1/4" NPT (Not Shown)
	108035	AR	BREATHER, 1/8"-27 NPT (Not Shown)
4	100829	1 per	FLAT HD BOLT, 1/2"-13 X 1.750"
5	128062	1 per	PISTON ROD, for Part# 100303
	128063	1 per	PISTON ROD, for Part# 100304
	128064	1 per	PISTON ROD, for Part# 100305 and Part# 100306
6	128065	1 per	INNER BARREL, for Part# 100303
	128066	1 per	INNER BARREL, for Part# 100304
	128067	1 per	INNER BARREL, for Part# 100305 and Part# 100306
7	*SEAL KIT	1 per	WIPER, Inner Rod
8	*SEAL KIT	1 per	WEAR RING, Inner Rod
9	100252	4 per	JAM NUT, 3/4"-10
10	*SEAL KIT	1 per	WIPER, Gland Nut
11	*SEAL KIT	1 per	WEAR RING, Gland Nut
12	*SEAL KIT	1 per	BACKUP RING, Piston
13	*SEAL KIT	1 per	O RING, Piston
14	*SEAL KIT	1 per	O RING, Piston Rod
15	*SEAL KIT	1 per	WEAR RING, Piston
16	*SEAL KIT	1 per	WEAR RING, Inner Barrel
17	*SEAL KIT	1 per	BACKUP RING, Inner Barrel
18	*SEAL KIT	1 per	O RING, Inner Barrel
19	128030	1 per	SC HD CAP SCREW, 3/8"-16 X 3.5"
20	125959	1 per	FLAT WASHER, 3/8" SAE Hardened
21	100246	1 per	INNER MOUNTING RING
	100309	2 per	BUSHING, 1" ID X 1"
22	100467	1 per	OUTER MOUNTING RING
	100309	2 per	BUSHING, 1" ID X 1"
23	100253	2 per	STUB BOLT, for Outside Ring
24	100254	2 per	STUB BOLT, for Inside Ring
25	103941	4 per	SC HD CAP SCREW, 1/4"-20 X .750"
26	104000	4 per	LOCK WASHER, 1/4"
27	106031	1 per	SHOCK ABSORTION RING
28	100832	1 per	CYLINDER YOKE, Long
	100826	1 per	CYLINDER YOKE, Medium
	100309	2 per	BUSHING, 1" ID X 1"

Parts list continued on the following page.

Figure 6.2-2, Lift Cylinder Assembly (Continued)

Index No.	Skyjack Part No.	Qty.	Description
Parts list continued from the previous page.			
29	(Ref)	1 per	CYLINDER STROKE LIMITER, (See Stroke Limiter List Section 5)
30	100830	1 per	LIFT CYLINDER SCREW STOP
31	100307	4 per	CYLINDER RETAINING BLOCKS
32	100250	2 per	STUB BOLT, for Yoke
33	103799	1 per	HYDRAULIC FUSE, 4 Gal. Two or Three Cylinder Machines
	103138	1 per	HYDRAULIC FUSE, 6 Gal. One Cylinder Machines
	106030	1 per	HYDRAULIC FUSE, 6 Gal. In-Line
*	103761	1 per	LIFT CYLINDER SEAL KIT, Serial Number OOA to OAE
*	103757	1 per	LIFT CYLINDER SEAL KIT, Serial Number OAF to End

Figure 6.3-1, Base Assembly, Drawer Type

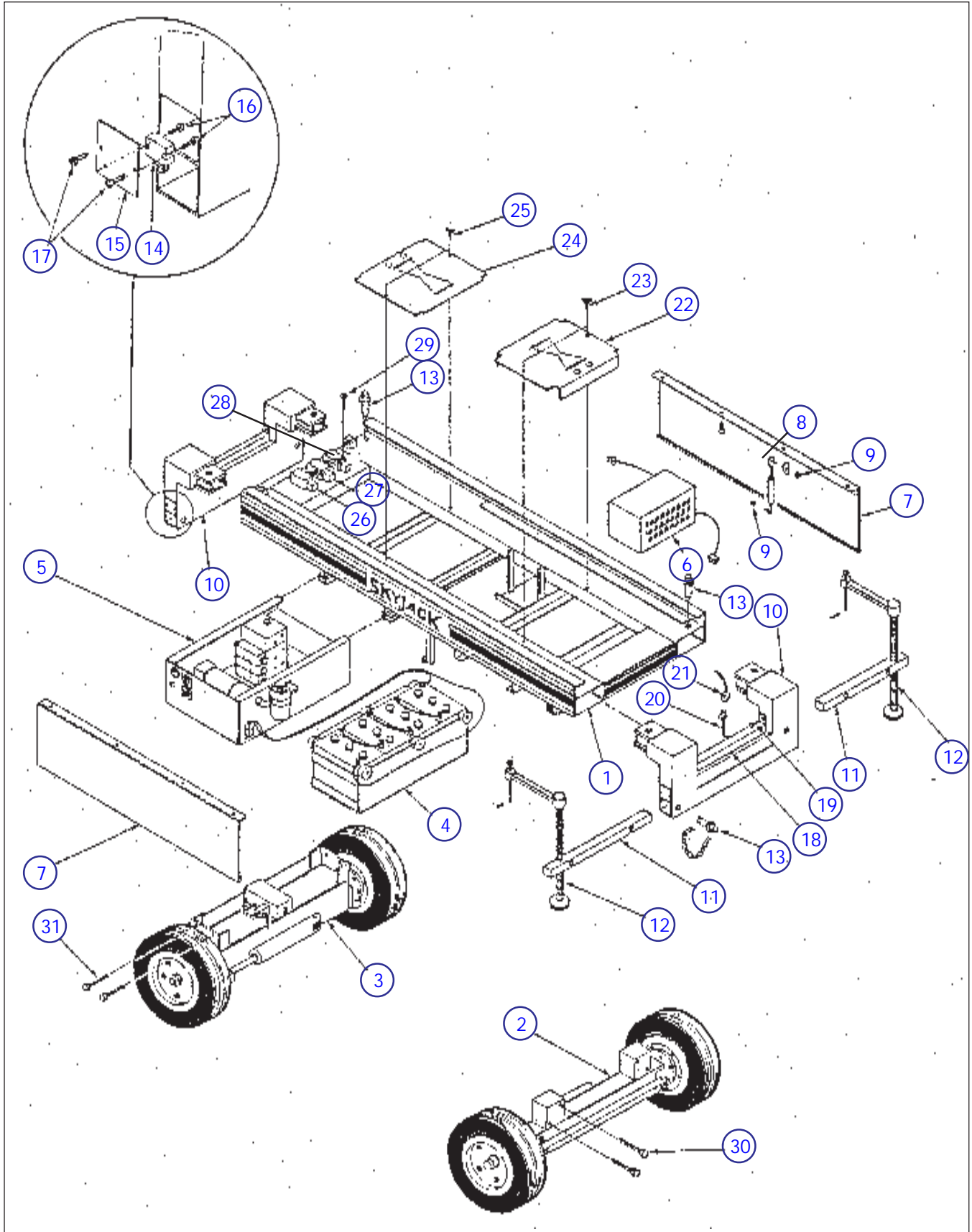


Figure 6.3-1, Base Assembly, Drawer Type

Index No.	Skyjack Part No.	Qty.	Description
1	N/A	1	BASE WELDMENT, SJ00X-07 Vertical Mount Axles
	N/A	1	BASE WELDMENT, SJ00X-10 Vertical Mount Axles
	N/A	1	BASE WELDMENT, SJ00X-13 Vertical Mount Axles
	N/A	1	BASE WELDMENT, SJ00X-07 Flat Mount Axles
	N/A	1	BASE WELDMENT, SJ00X-10, SJ00X-13, SJ00X-15 Flat Mount Axles
2	(Ref)	-	FRONT AXLE ASSEMBLY, (See Front Axle Assembly Parts List Figure 6.3-4)
3	(Ref)	-	REAR AXLE ASSEMBLY, (See Rear Axle Assembly Parts List Figure 6.3-6)
4	(Ref)	-	BATTERY TRAY ASSEMBLY, (See Battery Tray Parts List Figure 6.5-2)
5	(Ref)	-	HYDRAULIC TRAY ASSEMBLY, (See Hydraulic Tray Parts List Figure 6.4-2)
6	103029	1	BATTERY CHARGER, (See Charger Parts List Figure 6.5-3 to Figure 6.5-5)
7	106018	1	SIDE COVER, Charger Side
	106019	1	SIDE COVER, Tray Side
8	N/A	2	GAS SPRING CYLINDER
9	100397	4	NUT, 5/16"-18
10	N/A	2	OUTRIGGER FRAME, Tube Mounted SJ00X-07 Models
	N/A	2	OUTRIGGER FRAME, Tube Mounted SJ00X-10, SJ00X-13 Models
11	106013	4	EXTENSION TUBE, 2 1/2"
12	128068	4	SCREW JACK
	128069	4	JACK HANDLE
	128070	4	JACK HANDLE KNOB
	106017	4	LOCKING PIN
13	103055	4	LOCKING PIN RETAINING CLIP
	102847	1	LIMIT SWITCH BODY
14	103017	1	HEAD, Roller
	103036	1	STRAIN RELIEF
	128071	4	LIMIT SWITCH BRACKET
15	128071	4	LIMIT SWITCH BRACKET
16	103963	8	MACHINE SCREW, #10-32 X 1.5"
17	103962	8	MACHINE SCREW, #10-32 X .5"
18	100612	2	LIMIT SWITCH WIRE COVER, SJ00X-07 Models
	100620	2	LIMIT SWITCH WIRE COVER, SJ00X-10, SJ00X-13 Models
19	103855	4	HEX HD BOLT, 1/4"-20 X .5"
	104000	4	LOCK WASHER, 1/4"
	103995	4	FLAT WASHER, 1/4" SAE
	(Ref)	-	CABLE ASSEMBLY, Switches to Plug
20	103256	AR/ft	CABLE, 18/2
	107712	1	• CONNECTOR ASSEMBLY, 5 Pole Male (When Replacing Old Style Connector Also Order Connector PT# 107711)
	103567	1 per	• • HOUSING
	103569	1 per	• • MALE INSERT 4 PIN + GROUND
	(Ref)	-	CABLE ASSEMBLY, Plug to Panel
	103255	AR/ft	CABLE, 18/4
	107711	1	• CONNECTOR ASSEMBLY, 5 Pole Female (When Replacing Old Style Connector Also Order Connector PT# 107712)
	103568	1 per	• • HOUSING c/w LATCH
	103570	1 per	• • FEMALE INSERT 4 PIN + GROUND

Figure 6.3-1, Base Assembly, Drawer Type (Continued)

Index No.	Skyjack Part No.	Qty.	Description
Parts list continued from the previous page.			
22	128072	1	BATTERY DRAWER COVER, SJ00X-07 Models
	128073	1	BATTERY DRAWER COVER, SJ00X-10 to SJ00X-15
23	103856	4	HEX HD BOLT, 1/4"-20 X .750"
	104000	4	LOCK WASHER, 1/4"
	103995	4	FLAT WASHER, 1/4" SAE
24	128074	1	HYDRAULIC DRAWER COVER, SJ00X-07 Models
	128075	1	HYDRAULIC DRAWER COVER, SJ00X-10 to SJ00X-15 Models
25	103856	4	HEX HD BOLT, 1/4"-20 X .750"
	104000	4	LOCK WASHER, 1/4"
	103995	4	FLAT WASHER, 1/4" SAE
26	(Ref)	1	LIMIT SWITCH, High Speed Cut Out
	102847	1	• LIMIT SWITCH BODY
	102882	1	• HEAD, Arm
	103142	1	• ACTUATOR, Lever
	103036	1	• STRAIN RELIEF
27	(Ref)	1AR	LIMIT SWITCH, Drive Cut Out
	102847	1	• LIMIT SWITCH BODY
	102882	1	• HEAD, Arm
	103224	1	• ACTUATOR, Lever c/w Roller
	103036	1	• STRAIN RELIEF
28	(Ref)	1AR	LIMIT SWITCH, Lift Cut Out
	102847	1	• LIMIT SWITCH BODY
	102882	1	• HEAD, Arm
	103142	1	• ACTUATOR, Lever
	103036	1	• STRAIN RELIEF
29	103963	2 per Sw	MACHINE SCREW, #10-32 X 1.5"
30	103900	4	HEX HD BOLT 5/8"-11 X 1.250"
	103998	4	LOCK WASHER, 5/8"
	100352	4	FLAT WASHER, 5/8" SAE
31	103900	4	HEX HD BOLT 5/8"-11 X 1.250"
	103998	4	LOCK WASHER, 5/8"
	100352	4	FLAT WASHER, 5/8" SAE
	103110	AR/rl	LABEL, Stripe Red/Blue/Red
	102896	4	LABEL, Forklift Boot
	106705	1	LABEL, Do Not Alter Limit Switches
	102631	2	LABEL, Skjack Logo Lg.
	103077	1	LABEL, Safety Bar
	105998	1	LABEL, Emergency Down Button
	102505	1	LABEL, Emergency Lowering Valve
	102912	1	LABEL, Charger

Figure 6.3-2, Base Assembly, Swing Out Type

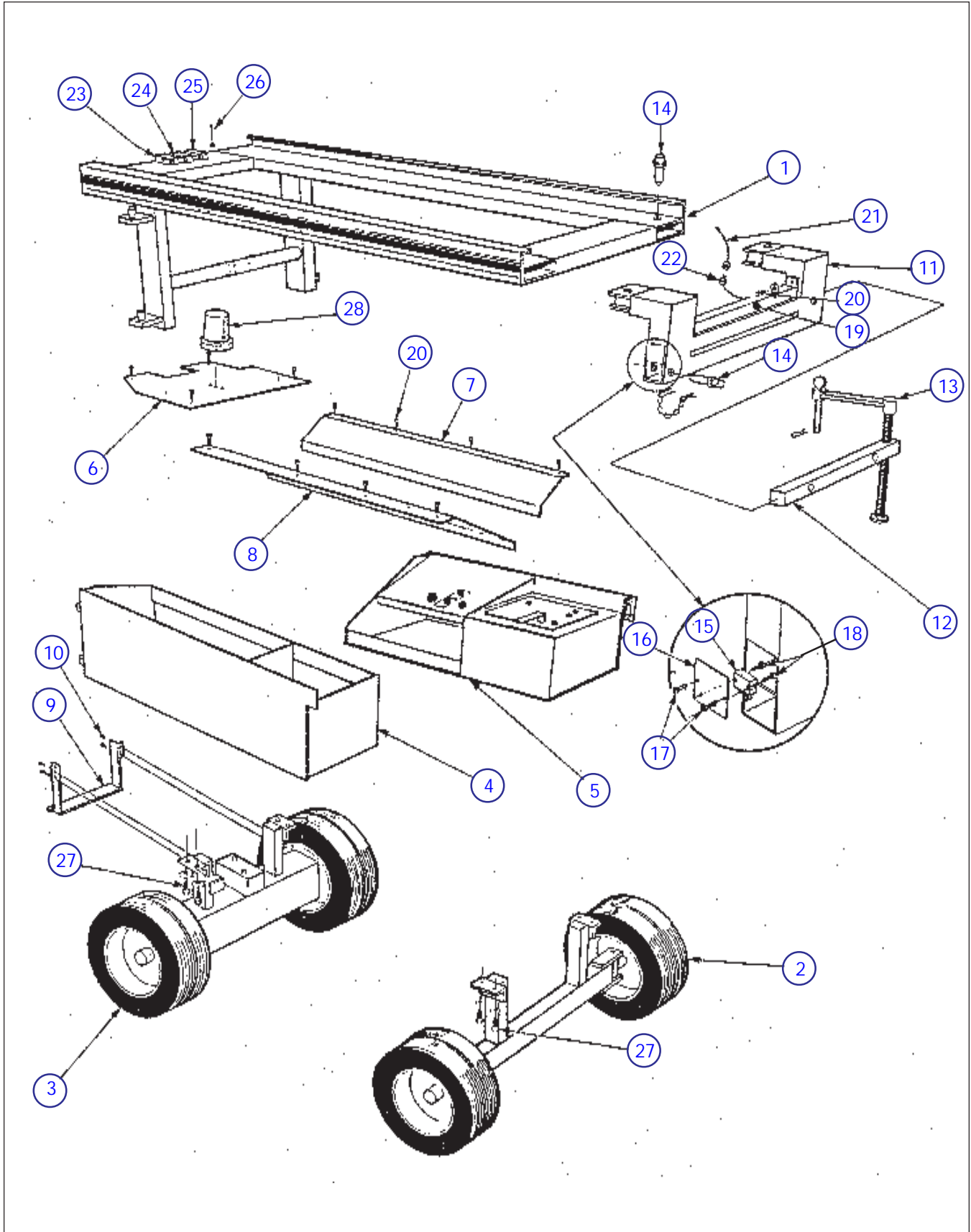


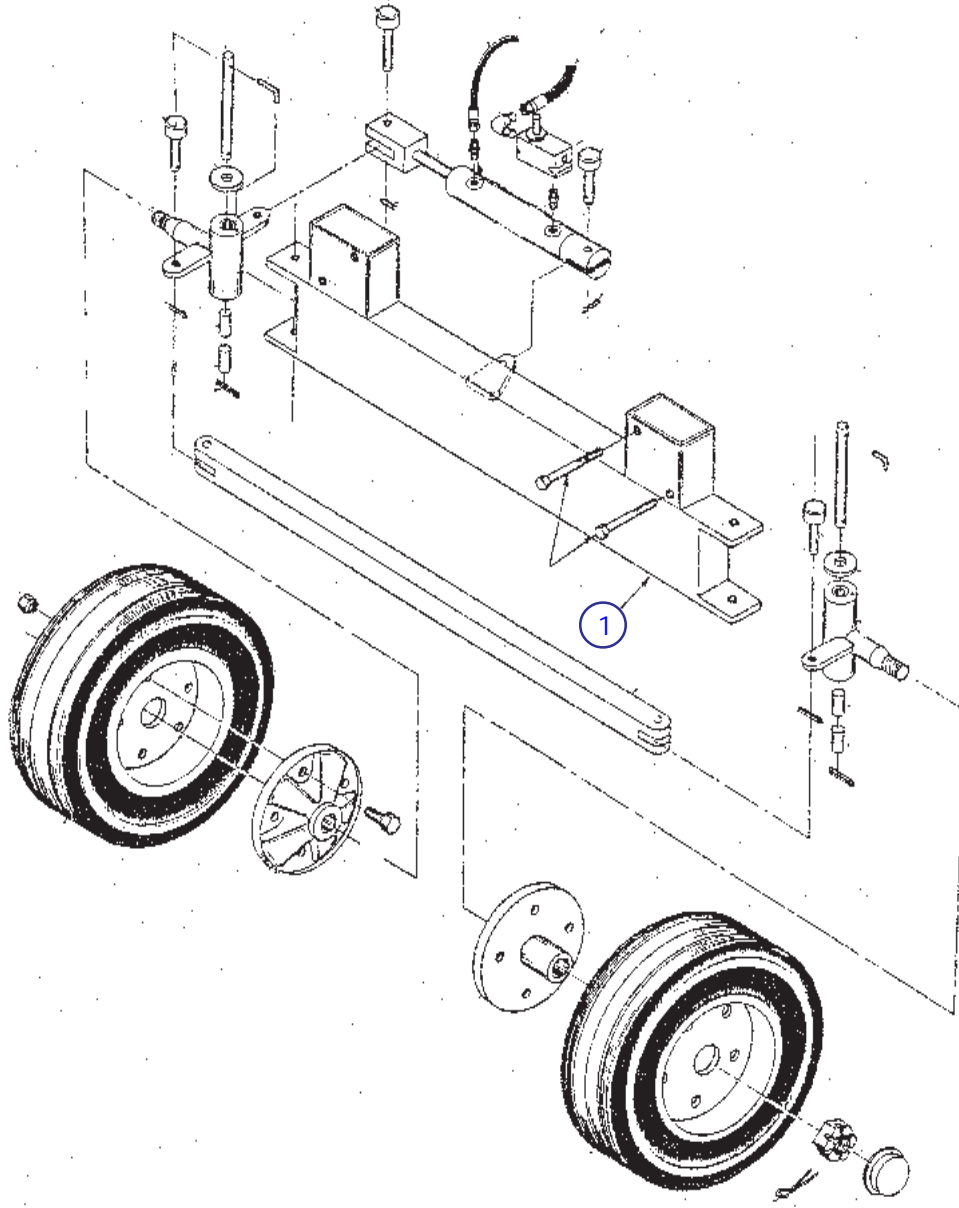
Figure 6.3-2, Base Assembly, Swing Out Type

Index No.	Skyjack Part No.	Qty.	Description
1	100278	1	BASE FRAME, All SJ00X-07 Models, EXCEPT SJ006.5-07
	103780	1	BASE FRAME, SJ006.5-07 Only
	100312	1	BASE FRAME, All SJ00X-10, SJ00X-13, SJ00X-15 Models, EXCEPT SJ007-15 and all SJ009 models
	100315	1	BASE FRAME, SJ009-15-13 Only
	100317	1	BASE FRAME, SJ007-15, SJ009-17-13 Only
	103449	1	BASE FRAME, SJ007-15 Only c/w Welded on Axles
	103454	1	BASE FRAME, SJ009-17-13 Only c/w Welded on Axles
	(Ref)	-	FRONT AXLE ASSEMBLY, (See Front Axle Assembly Parts List Figure 6.3-4)
2	(Ref)	-	REAR AXLE ASSEMBLY, (See Rear Axle Assembly Parts List Figure 6.3-6)
3	(Ref)	-	BATTERY TRAY ASSEMBLY, (See Battery Tray Parts List Figure 6.5-2)
4	(Ref)	-	HYDRAULIC TRAY ASSEMBLY, (See Hydraulic Tray Parts List Figure 6.4-2)
5	100363	1	BASE COVER, Rear SJ00X-07
	100359	1	BASE COVER, Rear All Other Models
6	100360	1	HYDRAULIC SIDE COVER, SJ00X-07
	100361	1	HYDRAULIC SIDE COVER, All Other Models
7	100362	1	BATTERY SIDE COVER, SJ00X-07
	100361	1	BATTERY SIDE COVER, All Other Models EXCEPT 36volt Powered Machines
8	100374	1	BATTERY SIDE COVER, 36volt Powered Machines Only
	128076	1	STEP, SJ007-15 and SJ009-17-13 Models c/w Platform Mounted Ladders
9	101632	4	HEX HD BOLT, 3/8"-16 X .750"
	103999	4	LOCK WASHER, 3/8"
	103472	4	FLAT WASHER, 3/8" SAE
	100641	2	OUTRIGGER FRAME, SJ00X-07
10	100664	2	OUTRIGGER FRAME, All SJ00X-10, SJ00X-13, SJ00X-15 Models, EXCEPT SJ007-15, SJ009-17-10, and SJ009-17-13 Models
	100667	2	OUTRIGGER FRAME, SJ007-15, SJ009-17-10 and SJ009-17-13
	100656	2	OUTRIGGER EXTENSION, Upper Assembly, SJ00X-07 Models
	100649	2	OUTRIGGER EXTENSION, Lower Assembly, SJ00X-07 Models
	100659	2	OUTRIGGER EXTENSION, Upper Assembly, All SJ00X-10, SJ00X-13, SJ00X-15 Models, EXCEPT SJ007-15, SJ009-17-XX Models
	100657	2	OUTRIGGER EXTENSION, Lower Assembly, All SJ00X-10, SJ00X-13, SJ00X-15 Models, EXCEPT SJ007-15, SJ009-17-XX Models
	100661	2	OUTRIGGER EXTENSION, Upper Assembly, SJ007-15, SJ009-17-XX
	100660	2	OUTRIGGER EXTENSION, Lower Assembly, SJ007-15, SJ009-17-XX
11	128068	4	SCREW JACK
	128069	4	JACK HANDLE
	128070	4	JACK HANDLE KNOB
12	100349	4	LOCKING PIN
	103055	4	LOCKING PIN RETAINING CLIP
13	102758	4	LIMIT SWITCH
	100618	4	LIMIT SWITCH SPACER
14	100611	4	LIMIT SWITCH COVER, Side
	100613	2	LIMIT SWITCH COVER, Box
15	100618	2	GROMMET, 9/16"
	100612	2	WIRE COVER, Outrigger Limit Switch SJ00X-07 Models
16	100620	2	WIRE COVER, Outrigger Limit Switch All Other Models
	103856	12	HEX HD BOLT 1/4"-20 NC X .750"
17	104000	12	LOCK WASHER, 1/4"
	103995	12	FLAT WASHER, 1/4" SAE
			Parts list continued on the following page.

Figure 6.3-2, Base Assembly, Swing Out Type (Continued)

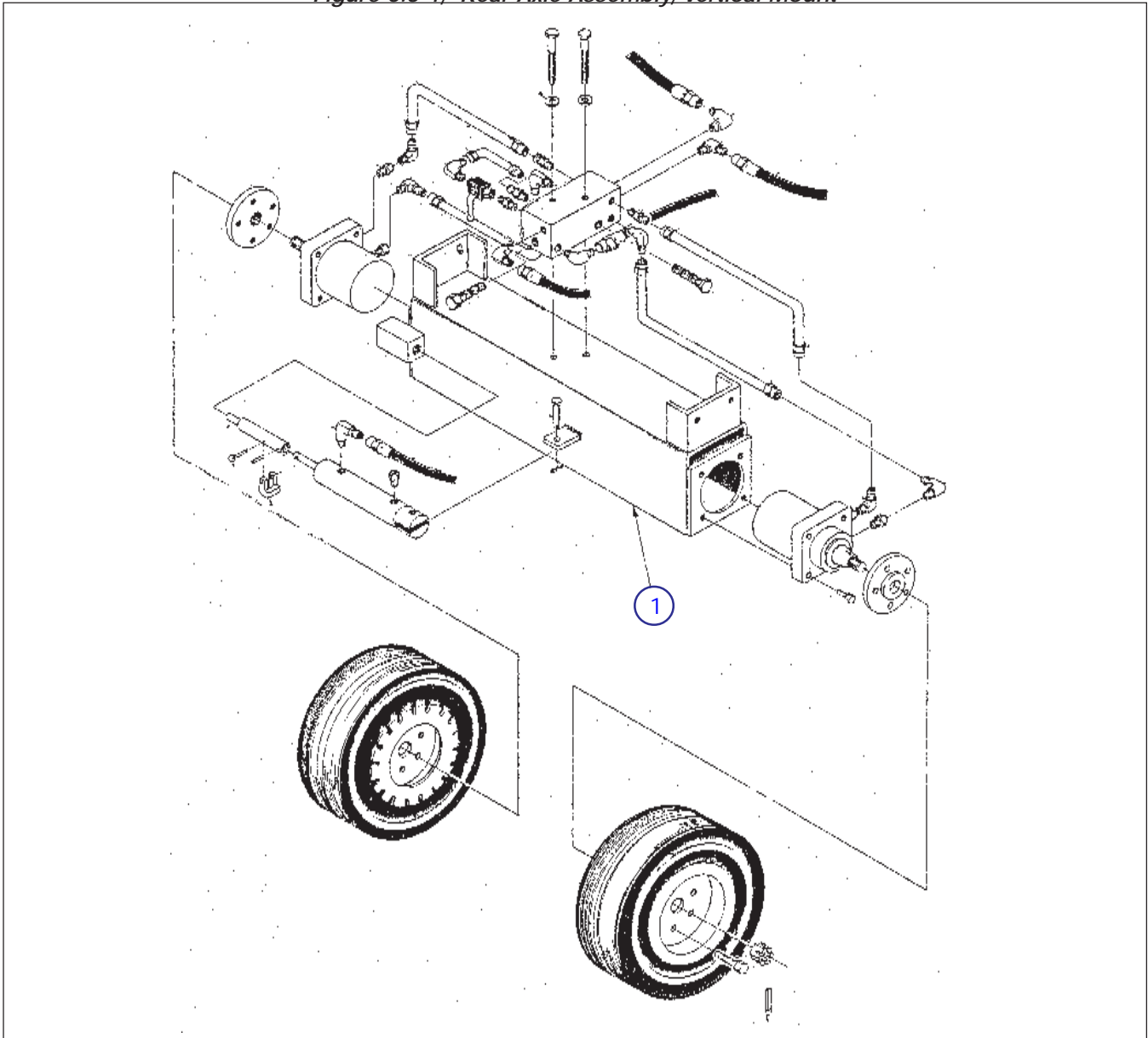
Index No.	Skyjack Part No.	Qty.	Description
21	(Ref)	-	Parts list continued from the previous page.
	103255	AR/ft	CABLE ASSEMBLY, Plug to Panel
	107711	1	CABLE, 18/4 • CONNECTOR ASSEMBLY, 5 Pole Female (When Replacing Old Style Connector Also Order Connector PT# 107712)
	103568	1 per	• • HOUSING c/w LATCH
	103570	1 per	• • FEMALE INSERT 4 PIN + GROUND
22	(Ref)	-	CABLE ASSEMBLY, Switches to Plug
	103256	AR/ft	CABLE, 18/2
	107712	1	• CONNECTOR ASSEMBLY, 5 Pole Male (When Replacing Old Style Connector Also Order Connector PT# 107711)
	103567	1 per	• • HOUSING
	103569	1 per	• • MALE INSERT 4 PIN + GROUND
23	(Ref)	1	LIMIT SWITCH, High Speed Cut Out
	102847	1	• LIMIT SWITCH BODY
	102882	1	• HEAD, Arm
	103142	1	• ACTUATOR, Lever
	103036	1	• STRAIN RELIEF
24	(Ref)	1AR	LIMIT SWITCH, Drive Cut Out
	102847	1	• LIMIT SWITCH BODY
	102882	1	• HEAD, Arm
	103224	1	• ACTUATOR, Lever c/w Roller
	103036	1	• STRAIN RELIEF
25	(Ref)	1AR	LIMIT SWITCH, Lift Cut Out
	102847	1	• LIMIT SWITCH BODY
	102882	1	• HEAD, Arm
	103142	1	• ACTUATOR, Lever
	103036	1	• STRAIN RELIEF
26	103963	2/sw	MACHINE SCREW, #10-32 X 1.5"
27	103900	8	HEX HD BOLT, 5/8"-11 X 1.250"
	103998	8	LOCK WASHER, 5/8"
28	121477	1	FLASHING LIGHT ASSEMBLY, 24Volts
	103111	1	FLASHING LIGHT BULB, 24Volts
	121533	2	FLASHING LIGHT LENS
	103110	AR/rl	LABEL, Stripe Red/Blue/Red
	102896	4	LABEL, Fork Lift Boot
	106705	1	LABEL, Do Not Alter Limit Switches
	103077	1	LABEL, Safety Bar
	100409	2	LADDER, Base Mounted Three Scissors Machines (Not Shown)
	109031	2	LADDER, Base Mounted Four Scissors Machines (Not Shown)
	109027	2	LADDER, Base Mounted Five Scissors Machines (Not Shown)
	100875	2	REAR AXLE REINFORCEMENT BAR, SJ007-15 and SJ009-17-13 Models c/w Bolt on Axles (Not Shown)
	100876	2	REAR AXLE REINFORCEMENT AXLE PLATE, SJ007-15 and SJ009-17-13 Models c/w Bolt on Axles (Not Shown)
	100877	2	REAR AXLE REINFORCEMENT BASE MOUNT PLATE, SJ007-15 and SJ009-17-13 Models c/w Bolt on Axles (Not Shown)
	103734	1	BASE CONTROL BOX BRACKET, Europe (Not Shown)
	100332	1	FRONT AXLE STIFFENER, Machines with 26" Tires (Not Shown)
103465	1	TRAY SUPPORT BRACKET, 36Volt (Not Shown)	
100324	2	TRAY SUPPORT BRACKET ROLLER (Not Shown)	

Figure 6.3-3, Front Axle Assembly, Vertical Mount



Index No.	Skyjack Part No.	Qty.	Description
1	N/A	1	FRONT AXLE WELDMENT, SJ00X-07 Vertical Mount Axle
	N/A	1	FRONT AXLE WELDMENT, SJ00X-10 Vertical Mount Axle
	N/A	1	FRONT AXLE WELDMENT, SJ00X-13 Vertical Mount Axle
			For Axle Components Refer to Axle Assembly Figure 6.3-5

Figure 6.3-4, Rear Axle Assembly, Vertical Mount



Index No.	Skyjack Part No.	Qty.	Description
1	N/A	1	REAR AXLE WELDMENT, SJ00X-07 Vertical Mount Axle
	N/A	1	REAR AXLE WELDMENT, SJ00X-10 Vertical Mount Axle
	N/A	1	REAR AXLE WELDMENT, SJ00X-13 Vertical Mount Axle

For Axle Components Refer to Axle Assembly Figure 6.3-6

Figure 6.3-5. Front Axle Assembly, Flat Mount

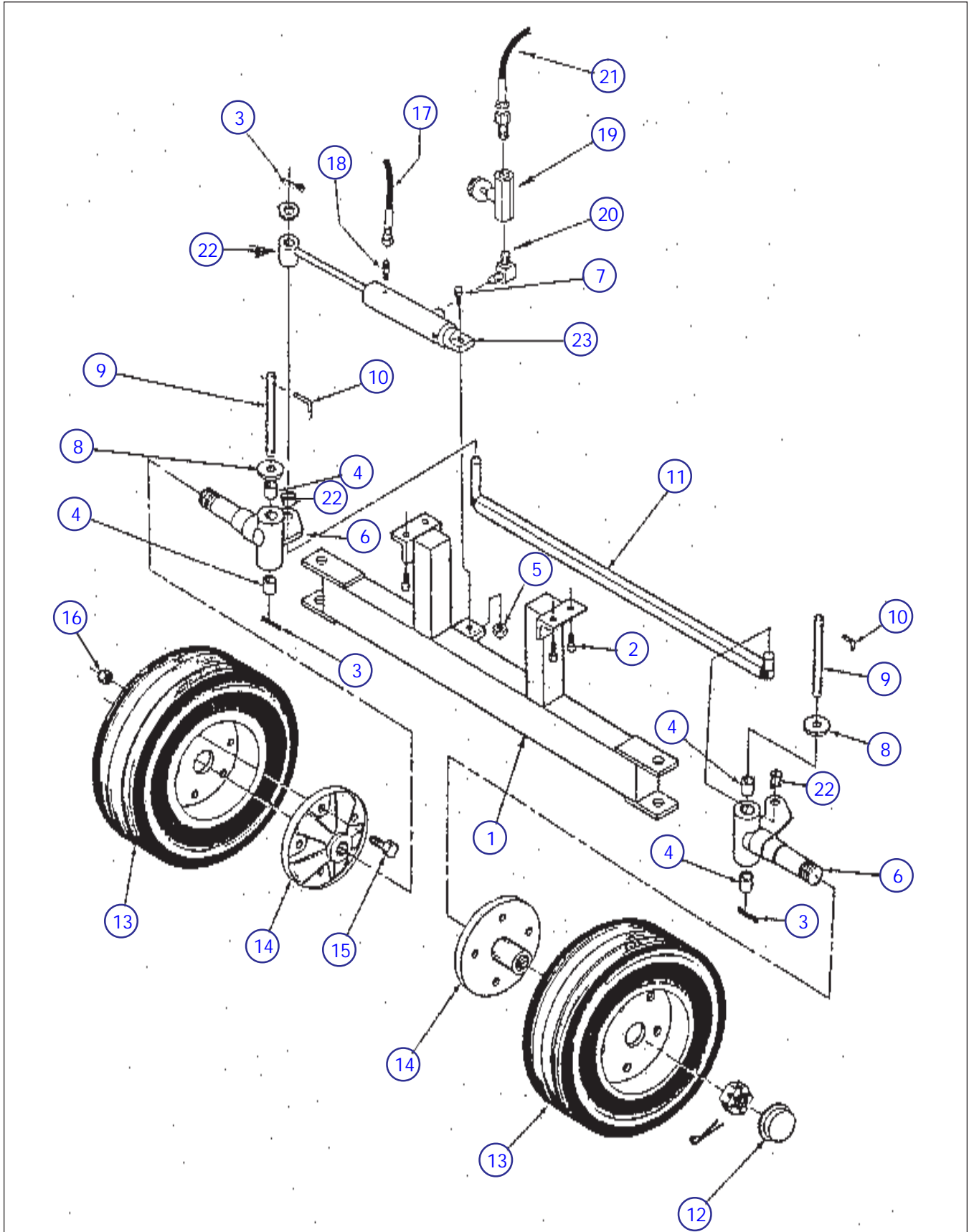


Figure 6.3-5. Front Axle Assembly, Flat Mount

Index No.	Skyjack Part No.	Qty.	Description	
1	100170	1	FRONT AXLE WELDMENT, SJ005-07 Model Only	
	100176	1	FRONT AXLE WELDMENT, All Other SJ00X-07 Models	
	100178	1	FRONT AXLE WELDMENT, All SJ00X-10 Models EXCEPT SJ006.8-10	
	100186	1	FRONT AXLE WELDMENT, SJ006.8-10 Model Only	
	100181	1	FRONT AXLE WELDMENT, All SJ00X-13 Models	
	100183	1	FRONT AXLE WELDMENT, All SJ00X-15 Models EXCEPT SJ007-15 and SJ009-15-10,13	
	100193	1	FRONT AXLE WELDMENT, SJ007-15 Model Only	
	128077	1	FRONT AXLE WELDMENT, SJ009-15-10,13 Models Only	
	128078	1	FRONT AXLE WELDMENT, SJ009-17-13 Model Only	
	100863	1	FRONT AXLE WELDMENT, SJ007-15 Model Only Raised Steer Cylinder Bracket	
	100864	1	FRONT AXLE WELDMENT, SJ009-15-10,13 Models Only Raised Steer Cylinder Bracket	
	100861	1	FRONT AXLE WELDMENT, SJ009-17-13 Model Only Raised Steer Cylinder Bracket	
	2	103900	4	HEX HD BOLT, 5/8"-11 X 1.250"
		103998	4	LOCK WASHER, 5/8"
3	103478	2	COTTER PIN, 1/4" Dia. X 1.250"	
4	100050	4	BUSHING	
5	103982	1	JAM NUT, 5/8"-11	
6	108730	2	SPINDLE ASSEMBLY, Must also Replace Item #14 and Components	
7	103897	1	HEX HD BOLT, 5/8"-11 X 2"	
8	104129	2	BRONZE THRUST WASHER, 3/4"ID	
9	100120	2	KING PIN	
10	100121	2	RETAINING PIN, Long L	
	100825	2	RETAINING PIN, Straight	
11	100352	2	FLAT WASHER, 5/8" SAE, Used with each Tie Rod Assembly	
	103478	2	COTTER PIN, 1/4" X 1.250" Used with each Tie Rod Assembly	
	100260	1	TIE ROD ASSEMBLY, SJ005-07 Model Only	
	100264	1	TIE ROD ASSEMBLY, All Other SJ00X-07 Models	
	100266	1	TIE ROD ASSEMBLY, All SJ00X-10 Models EXCEPT SJ006.8-10	
	100268	1	TIE ROD ASSEMBLY, SJ006.8-10 Model Only	
	100270	1	TIE ROD ASSEMBLY, All SJ00X-13 Models	
	100272	1	TIE ROD ASSEMBLY, All SJ00X-15 Models EXCEPT SJ007-15 and SJ009-15-10,13	
	121648	1	TIE ROD ASSEMBLY, SJ009-15-13 Model Only	
	106010	1	PIN, 1.560"	
	106028	1	PIN, 2.870"	
	101200	4	BRONZE THRUST WASHER, 5/8"ID	
	103855	2	HEX HD BOLT, 1/4"-20 X 0.5"	
	104000	2	LOCK WASHER, 1/4"	
	100859	1	TIE ROD ASSEMBLY, SJ009-15-10,13 Models Only Bolt On	
	100853	1	SPHERICAL END, LH	
	100855	1	JAM NUT, 5/8"-18 LH	
	100854	1	SPHERICAL END, RH	
	100846	1	JAM NUT, 5/8"-18 RH	

Parts list continued on the following page.

Figure 6.3-5. Front Axle Assembly, Flat Mount (Continued)

Index No.	Skyjack Part No.	Qty.	Description
			Parts list continued from the previous page.
	106011	1	TIE ROD ASSEMBLY, SJ007-15 Model Only
	106010	1	PIN, 1.560"
	106028	1	PIN, 2.870"
	101200	4	BRONZE THRUST WASHER, 5/8"ID
	103855	2	HEX HD BOLT, 1/4"-20 X 0.5"
	104000	2	LOCK WASHER, 1/4"
	100857	1	TIE ROD ASSEMBLY, SJ007-15 Model Only Bolt On
	100853	1	SPHERICAL END, LH
	100855	1	JAM NUT, 5/8"-18 LH
	100854	1	SPHERICAL END, RH
	100846	1	JAM NUT, 5/8"-18 RH
	106011	1	TIE ROD ASSEMBLY, SJ009-17-13 Model Only
	106010	1	PIN, 1.560"
	106028	1	PIN, 2.870"
	101200	4	BRONZE THRUST WASHER, 5/8"ID
	103855	2	HEX HD BOLT, 1/4"-20 X 0.5"
	104000	2	LOCK WASHER, 1/4"
	100851	1	TIE ROD ASSEMBLY, SJ009-17-13 Model Only Bolt On
	100853	1	SPHERICAL END, LH
	100855	1	JAM NUT, 5/8"-18 LH
	100854	1	SPHERICAL END, RH
	100846	1	JAM NUT, 5/8"-18 RH
12	106047	2	HUB CAP
13	103089	3	RIM AND SOLID TIRE, Type #1, 16" Dia. X 4.00
	103088	3	RIM AND SOLID TIRE, Type #2, 18" Dia. X 5.50
	102965	3	RIM AND FILLED TIRE, Type #3, 26" Dia.
	111607	3	RIM AND FILLED TIRE, Type #4, 16" Dia. X 6.50
	106185	3	RIM AND FILLED TIRE, Type #5, 18" Dia. X 9.50
14	107909	2	FRONT HUB ASSEMBLY
	102833	1	• HUB
	102749	1	• NUT, Castle 1"-14 UNF
	102829	1	• WASHER, Flat
	102865	1	• CAP, Dust
	103003	1	• BEARING, Outer Cone
	103009	1	• BEARING, Inner Cone
	103085	1	• COTTER PIN, 3/16" X 1.5"
	103144	1	• SEAL, Grease
	102978	1	• CUP, Bearing Inner
	102977	1	• CUP, Bearing Outer
15	103908	5 per	BOLT, 1/2"-20 X 1.5"
	103470	5 per	LOCK WASHER, 1/2"
16	103349	5 per	WHEEL NUT, 1/2"-20 LUG
	103199	5 per	WHEEL BOLT, 1/2"-20 LUG
17	(Ref)	1	HOSE, Cylinder to Manifold (Reference Hose List Section 5)
18	(Ref)	1	ADAPTER, Straight (Reference Fitting List Section 5)
	(Ref)	1	ADAPTER, Elbow (Reference Fitting List Section 5)
19	103355	1	VALVE, Flow Control
20	(Ref)	1	FITTING, Elbow (Reference Fitting List Section 5)
21	(Ref)	1	HOSE, Valve to Manifold (Reference Hose List Section 5)
22	100259	1 per	BUSHING
23	115691	1	STEER CYLINDER, (Ref Steer Cylinder Parts List Figure 6.3-7)

Figure 6.3-6, Rear Axle Assembly, Flat Mount

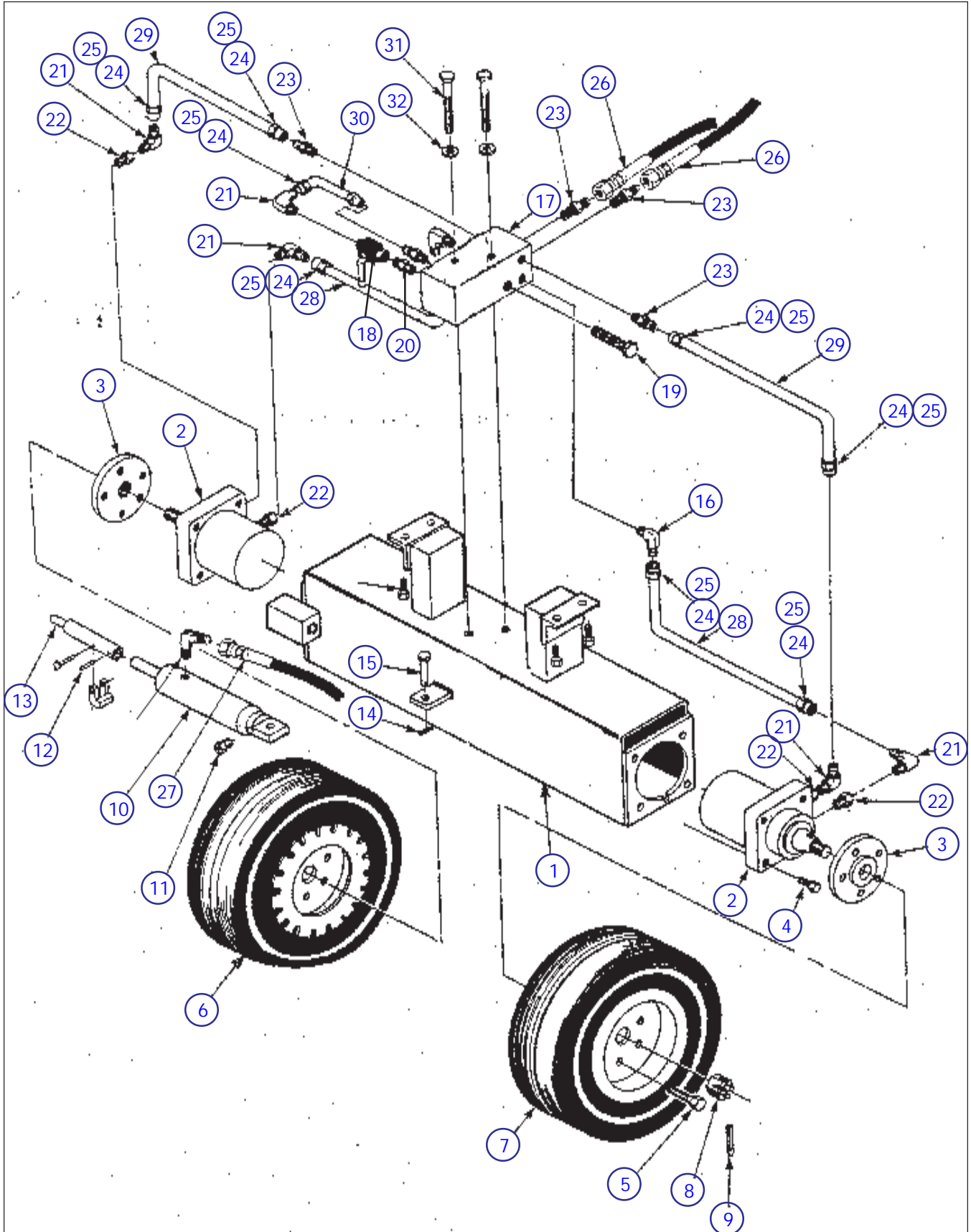


Figure 6.3-6, Rear Axle Assembly, Flat Mount

Index No.	Skyjack Part No.	Qty.	Description	
1	100012	1	REAR AXLE WELDMENT, SJ005-07 Model Only	
	100019	1	REAR AXLE WELDMENT, All Other SJ00X-07 Models	
	100021	1	REAR AXLE WELDMENT, All SJ00X-10 Models EXCEPT SJ006.8-10	
	100023	1	REAR AXLE WELDMENT, SJ006.8-10 Model Only	
	100025	1	REAR AXLE WELDMENT, All SJ00X-13 Models	
	100878	1	REAR AXLE WELDMENT, All SJ00X-13 Models c/w #5 Tires	
	100027	1	REAR AXLE WELDMENT, All SJ00X-15 Models EXCEPT SJ007-15, SJ009-15-10,13	
	100879	1	REAR AXLE WELDMENT, All SJ00X-15 Models c/w #5 Tires EXCEPT SJ007-15, SJ009-15-10,13	
	100029	1	REAR AXLE WELDMENT, SJ009-15-10,13 Models	
	100880	1	REAR AXLE WELDMENT, SJ009-15-10,13 Models c/w #5 Tires	
	128086	1	REAR AXLE WELDMENT, SJ007-15. 39.5" Axle Width	
	128087	1	REAR AXLE WELDMENT, SJ009-17-13. 45.5" Axle Width	
	100039	1	REAR AXLE WELDMENT, SJ007-15 c/w Model RE3220 Hydraulic Motors. 36.5" Axle Width	
	100043	1	REAR AXLE WELDMENT, SJ009-17-13 c/w Model RE3220 Hydraulic Motors. 42.5" Axle Width	
	2	103133	2	HYDRAULIC MOTOR, MODEL RE1207, 16" and 18" Dia. Wheels c/w 24Volt GE Electric Motor ONLY.
		103130	2	HYDRAULIC MOTOR, MODEL RE1407, 16" and 18" Dia. Wheels c/w Standard 24Volt Electric Motor Pump Combination.
103132		2	HYDRAULIC MOTOR, MODEL RE2407, 18" Dia. Wheels c/w 36Volt GE Electric Motor Pump Combination.	
103131		2	SJ009-17-13R c/w 36Volt GE Electric Motor and Ram Type Lift Cylinders HYDRAULIC MOTOR, MODEL RE3207, 26" Dia. Wheels c/w 36Volt GE Electric Motor Pump Combination.	
102902		2	SJ007-15 39.5" Axle Width, SJ009-17-13 45.5" Axle Width HYDRAULIC MOTOR, MODEL RE2420, SJ009-17-13R 3" Ram Cylinder Rod Dia. And c/w GE Electric Motor.	
102689		2	HYDRAULIC MOTOR, MODEL RE3220, 26" Dia. Wheels c/w 36Volt GE Electric Motor Pump Combination.	
			SJ007-15 36.5" Axle Width, SJ009-17-13 42.5" Axle Width SJ009-17-13R 3.5" Ram Cylinder Rod Dia. C/w Fenner Electric Motor.	
3	107912	2	REAR HUB, 1.25" Shaft Dia.	
	107037	2	REAR HUB, 1.5" Shaft Dia.	
4	103902	8	HEX HD. BOLT, 1/2"-13 X 2.250"	
	103470	8	LOCK WASHER, 1/2"	
5	103199	10	WHEEL LUG BOLT	
6	103808	1	RIM AND SOLID TIRE WITH BRAKE, Type #1, 16" Dia. X 4.00	
	104178	1	RIM AND SOLID TIRE WITH BRAKE, Type #2, 18" Dia. X 5.50	
	100196	1	RIM AND FILLED TIRE WITH BRAKE, Type #3, 26" Dia.	
	104089	1	RIM AND FILLED TIRE WITH BRAKE, Type #4, 16" Dia. X 6.50	
	104182	1	RIM AND FILLED TIRE WITH BRAKE, Type #5, 18" Dia. X 9.50	
7	103089	3	RIM AND SOLID TIRE, Type #1, 16" Dia. X 4.00	
	103088	3	RIM AND SOLID TIRE, Type #2, 18" Dia. X 5.50	
	102965	3	RIM AND FILLED TIRE, Type #3, 26" Dia.	
	102966	3	RIM AND FILLED TIRE, Type #4, 16" Dia. X 6.50	
	106185	3	RIM AND FILLED TIRE, Type #5, 18" Dia. X 9.50	
				Parts list continued on the following page.

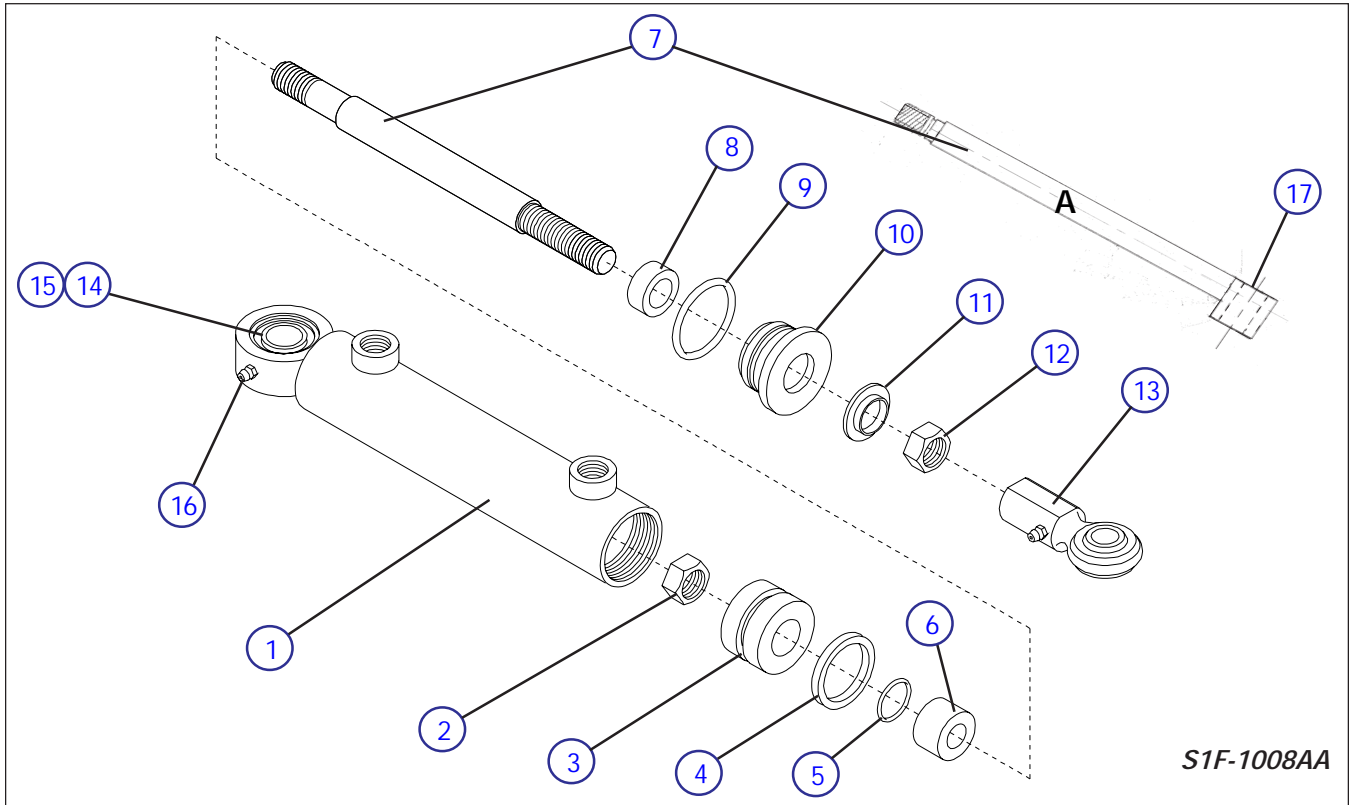
Figure 6.3-6, Rear Axle Assembly, Flat Mount (Continued)

Index No.	Skyjack Part No.	Qty.	Description
Parts list continued from the previous page.			
8	102749	2	CASTLE NUT, 1"-14 X .560"
	106451	2	LOCK NUT, 1"-14
	106230	2	LOCK NUT, 1 1/4"-12
	103789	2	TOOTHED LOCK WASHER, 1" ID
	103969	2	TOOTHED LOCK WASHER, 1.250" ID
9	122071	2	COTTER PIN, 1/8" X 2"
10	(Ref)	1	BRAKE CYLINDER, (See Brake Cylinder Parts List Figure 6.3-8)
11	108035	1	BREATHER
12	103940	1	SC HD CAP SCREW, 1/4"-20 X 1 1/4"
	104000	1	LOCK WASHER, 1/4"
	103980	1	NUT, 1/4"-20
13	104488	1	BRAKE PIN LH, All Tire Types, EXCEPT 26" Dia. Filled
	105890	1	BRAKE PIN RH, All Tire Types, EXCEPT 26" Dia. Filled
	104458	1	BRAKE PIN LH, 26" Dia. Filled Tires Only
	105891	1	BRAKE PIN RH, 26" Dia. Filled Tires Only
14	103982		JAM NUT, 5/8"-11
15	103897		HEX HD BOLT, 5/8"-11 X 2"
16	(Ref)	1	FITTING, 1/4"NPT #6JIC Elbow (Reference Fitting List Section 5)
	(Ref)	1	FITTING, 1/4"O Ring #6JIC Elbow (Reference Fitting List Section 5)
17	N/A	1	REAR MANIFIOLD, Lever Type Free Wheeling Valve
	100379	1	REAR MANIFIOLD, Knob Type Free Wheeling Valve
18	102573	1	FREE WHEELING VALVE, Lever Type
	103136	1	FREE WHEELING VALVE, Knob Type
19	103355	1	FLOW DIVIDER
20	(Ref)	1	FITTING, 3/8"NPT Nipple (Reference Fitting List Section 5)
21	(Ref)	7	FITTING, 3/8"NPT #6JIC Elbow (Reference Fitting List Section 5)
22	(Ref)	4	FITTING, Adapter (Reference Fitting List Section 5)
23	(Ref)	3	FITTING, 3/8"NPT #6JIC Straight (Reference Fitting List Section 5)
24	N/A	8	COMPRESSION NUT (Part of Items 28 and 29)
25	N/A	8	COMPRESSION WASHER (Part of Items 28 and 29)
26	(Ref)	2	HOSE, Drive SJ00X-07 Models (Reference Hose List Section 5)
	(Ref)	2	HOSE, Drive All Other Models (Reference Hose List Section 5)
27	(Ref)	2	HOSE, Brake SJ00X-07 Models (Reference Hose List Section 5)
	(Ref)	2	HOSE, Brake All Other Models (Reference Hose List Section 5)
28	100710	2	TUBE, Lower SJ005-07 Model Only
	100713	2	TUBE, Lower All Other SJ00X-07 Models
	100712	2	TUBE, Lower All SJ00X-10 Models EXCEPT SJ006.8-10
	100716	2	TUBE, Lower SJ006.8-10 Model Only
	100714	2	TUBE, Lower All SJ00X-13 Models
	100715	2	TUBE, Lower All SJ00X-15 Models EXCEPT SJ007-15 and SJ009-15-13
	100719	2	TUBE, Lower SJ007-15 Model Only
	100717	2	TUBE, Lower SJ009-15-13 Model Only
	100718	2	TUBE, Lower SJ009-17-13 Model Only
Parts list continued on the following page.			

Figure 6.3-6, Rear Axle Assembly, Flat Mount (Continued)

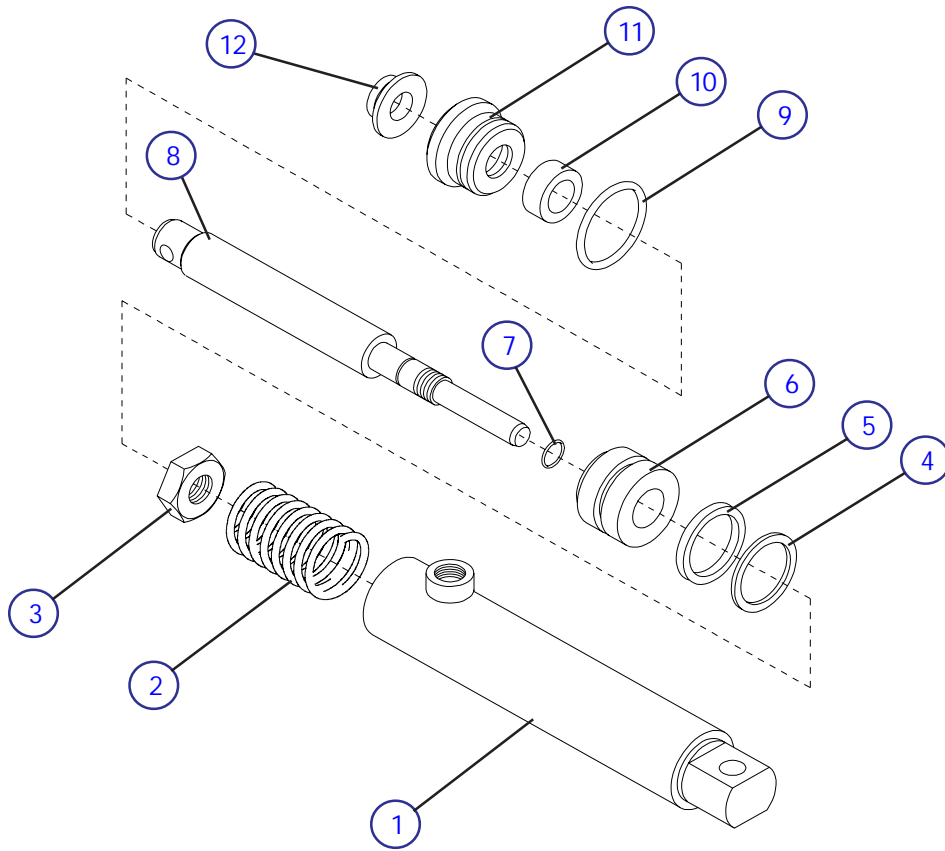
Index No.	Skyjack Part No.	Qty.	Description
Parts list continued from the previous page.			
29	100711	2	TUBE, Upper SJ005-07 Model Only
	100721	2	TUBE, Upper All Other SJ00X-07 Models
	100720	2	TUBE, Upper All SJ00X-10 Models EXCEPT SJ006.8-10
	100724	2	TUBE, Upper SJ006.8-10 Model Only
	100722	2	TUBE, Upper All SJ00X-13 Models
	100723	2	TUBE, Upper All SJ00X-15 Models EXCEPT SJ007-15 and SJ009-15-13
	100727	2	TUBE, Upper SJ007-15 Model Only
	100725	2	TUBE, Upper SJ009-15-13 Model Only
	100726	2	TUBE, Upper SJ009-17-13 Model Only
30	N/A	1	TUBE, Freewheeling Valve Loop
31	103863	2	HEX HD BOLT, 1/4"-20 X 3.5"
32	104000	2	LOCK WASHER, 1/4"
	106515	1	LABEL, Brake Lockout
	103297	1	LABEL, Free Wheeling Valve
	(Ref)	1	LABEL, Serial Plate
	104212	1	SEAL KIT, All Hydraulic REXX07 Motors
	104211	1	SEAL KIT, All Hydraulic REXX20 Motors

Figure 6.3-7, Steer Cylinder Assembly



Index No.	Skyjack Part No.	Qty.	Description
A	121133	-	CYLINDER ASSEMBLY, Steer (Models c/w Old Style Rod 3/4" Dia)
B	120240	-	CYLINDER ASSEMBLY, Steer (Models c/w Spherical Bearing)
1	120235	1	• BARREL, Steer cylinder
2	103830	1	• NUT, Lock 5/8-11 grade C
3	118844	1	• PISTON
*4	103825	1	• SEAL, Piston
*5	110976	1	• O-RING, Rod
6	117671	1	• SPACER, Stroke
7	121134	1	• ROD, Piston, A 3/4" Dia
	106023	1	• ROD, Piston, A 5/8" Dia (Not Shown) (Cylinder Not Available)
	117047	1	• ROD, Piston, B
*8	103826	1	• SEAL, Rod
*9	120436	1	• O-RING, Gland
10	120148	1	• GLAND, Cylinder
*11	103827	1	• WIPER, Rod
12	100846	1	• NUT, Jam 5/8-18, B
13	100847	1	• END, Cylinder rod, B
14	102025	1	• BEARING, Spherical
15	104114	2	• RING, Retaining
16	103513	1	• FITTING, Grease
17	100259	3	BUSHING
	105816	AR	KIT, Seal repair
			* Part of Seal Repair Kit, 105816
			NOTE: If Replacing Older Cylinder Component Item Must Replace Cylinder

Figure 6.3-8, Brake Cylinder Assembly

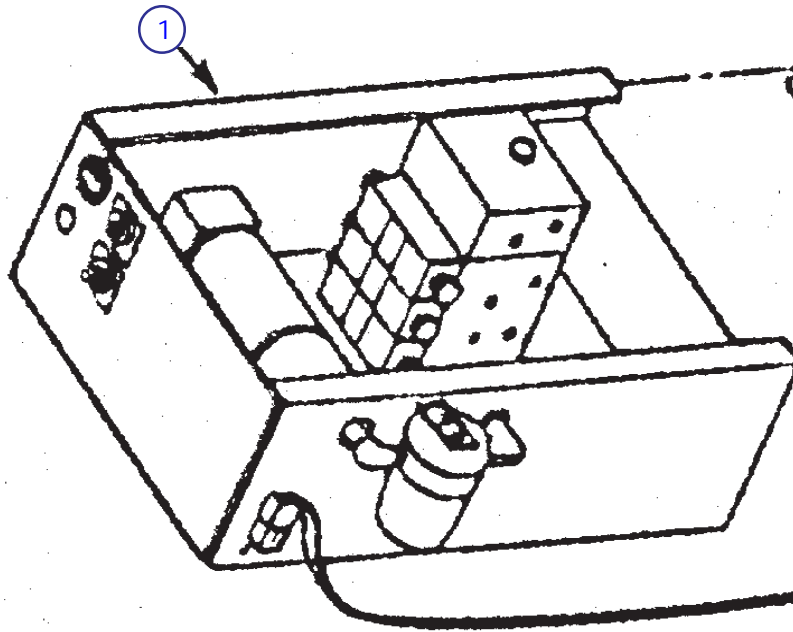


S1F-1007AB

Index No.	Skyjack Part No.	Qty.	Description
A	120220	-	CYLINDER ASSEMBLY, Brake
1	120153	1	• BARREL, Brake cylinder
2	102844	1	• SPRING, Brake return
3	103830	1	• NUT, Lock 5/8-11 grade C
4	120368	1	• RING, Back-up
*5	111295	1	• SEAL, Piston
6	118844	1	• PISTON
*7	110976	1	• O-RING, Rod
8	120154	1	• ROD, Brake
*9	120436	1	• O-RING, Gland
*10	103826	1	• SEAL, Rod
11	120148	1	• GLAND
*12	103827	1	• WIPER, Rod
*	105816	AR	KIT, Seal repair * Part of Seal Repair Kit, 105816

NOTE: If Replacing Older Cylinder Component Item Must Replace Cylinder

Figure 6.4-1 Hydraulic Drawer Assembly



Index No.	Skyjack Part No.	Qty.	Description
1	N/A N/A	1 1	HYDRAULIC DRAWER, SJ00X-07 Models HYDRAULIC DRAWER, All Other Models For Components Refer to Tray Assembly Figure 6.4-2

Figure 6.4-2, Hydraulic Tray Assembly

Index No.	Skyjack Part No.	Qty.	Description
1	108857	1	HYDRAULIC TRAY
	100335	2	BUSHING, Bronze Flanged
2	106578	2	CUSHION CYLINDER
	103856	2	HEX HD BOLT, 1/4"-20 X .750"
	104000	2	LOCK WASHER, 1/4"
	103980	2	NUT, 1/4"-20
3	(Ref)	1	MAIN MANIFOLD ASSEMBLY, (See Main Manifold Parts List Figure 6.4-4)
	104207	1	MANIFOLD SPACER
	103872	1	HEX HD BOLT, 3/8"-16 X 2.250"
	103999	1	LOCK WASHER, 3/8"
4	119725	1	BATTERY SWITCH, (If Equipped)
	108714	1	• LOCK OUT KIT
5	(Ref)	1	ELECTRICAL PANEL, (See Electrical Panel Parts List Figure 6.4-3)
	103855	4	HEX HD BOLT, 1/4"-20 X .500"
	104000	4	LOCK WASHER, 1/4"
	103995	4	FLAT WASHER, 1/4" SAE
6	123475	1	PUMP/MOTOR ASSEMBLY, 24Volt Iskra for SJ005-XX to SJ005.8-XX
	106577	AR	• PUMP, Barnes
	123477	AR	• MOTOR, Iskra
	703183	AR	• COUPLER
	106963	AR	• MOUNTING PLATE
	122967	AR	• MOTOR BRUSHES
	123476	1	PUMP/MOTOR ASSEMBLY, 24Volt Iskra for All Other Models Except 36Volt
	106587	AR	• PUMP, Barnes
	123477	AR	• MOTOR, Iskra
	703183	AR	• COUPLER
	106963	AR	• MOUNTING PLATE
	122967	AR	• MOTOR BRUSHES
	108509	1	PUMP/MOTOR ASSEMBLY 36Volt GE
	102906	1	• PUMP
	102916	1	• MOTOR, GE
	103244	1	• COUPLER, Pump
	103253	1	• COUPLER, Motor
	103026	1	• COUPLER, Rubber
	103021	1	• BELL HOUSING
	100364	1	• MOUNTING PLATE
	104326	4	• MOTOR BRUSHES
	105810	AR	• BRUSH SPRINGS, GE
	107219	AR	• BRUSH HOLDER ASSEMBLY, GE
	(Ref)		FENNER MOTOR REPLACEMENT PARTS AVAILABLE
	104638	-	• PUMP, For 24Volt Fenner Motor .244 cu"
	105561	-	• PUMP, For 36Volt Fenner Motor
	105589	-	• COUPLING, Fenner Motor
	104328	-	• MOTOR BRUSHES, 24Volt Fenner
	(Ref)		LEESON MOTOR REPLACEMENT PARTS AVAILABLE
	106061	-	• COUPLING, Leeson 24Volt Motor
	106504	-	• COUPLING, Leeson 36Volt Motor
	104327	-	• BRUSH SPRINGS, Leeson Motor
	106050	-	• MOTOR ADAPTOR, Leeson

Parts list continued on the following page.

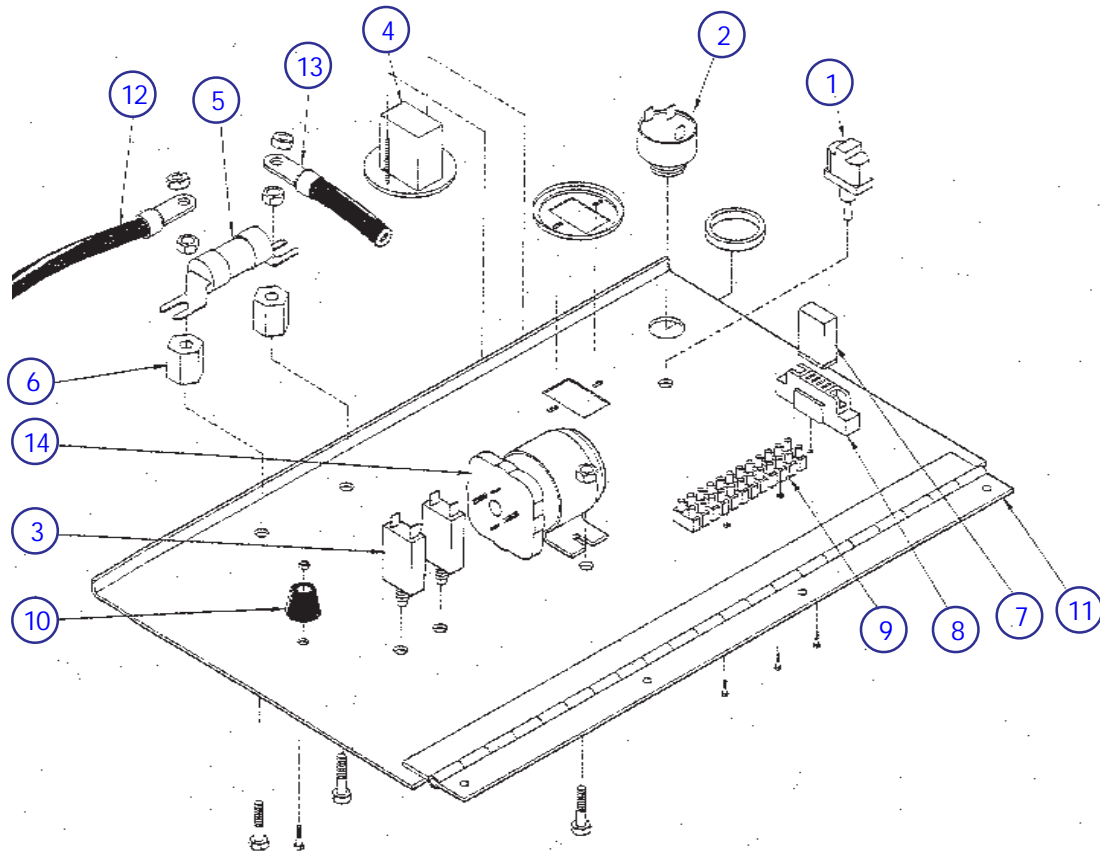
Figure 6.4-2, Hydraulic Tray Assembly (Continued)

Index No.	Skyjack Part No.	Qty.	Description
			Parts list continued on the following page.
	(Ref)		SCOTT/BARNES MOTOR REPLACEMENT PARTS AVAILABLE
	119164	-	• SHAFT SEAL, Barnes Pump
	115441	-	• GASKET, Between Scott Motor and Pump
	109171	-	• BRUSH CAP ASSEMBLY, Scott
	109174	-	• MOTOR BRUSHES, Scott
	(Ref)		WEBSTER/OHIO MOTOR REPLACEMENT PARTS AVAILABLE
	106053	-	• COUPLING, Flexible Webster Motor
	119139	-	• COUPLING, Tang .750" Webster Motor
	119140	-	• COUPLING, Tang .500" Webster Motor
	106058	-	• MOTOR BRUSHES, Ohio
	106051	-	• BRUSH SPRINGS, Ohio
	106059	-	• MOTOR SPACER, Ohio
	106086	-	• FRONT MOTOR BEARING, Ohio
	106087	-	• REAR MOTOR BEARING, Ohio
7	109267	1	HYDRAULIC TANK COVER, Top Mounted Hydraulic Filter
	108677	1	HYDRAULIC TANK COVER, External Hydraulic Filter (Not Shown)
	103962	14	SCREW, Machine #10-32 X .5"
8	(Ref)	1	MANUAL LOWERING VALVE ASSEMBLY
	103136	1	• VALVE, Manual Lowering
	103137	1	• BLOCK, Manual Lowering
9	102693	1	CAP c/w GASKET, Filler Breather
	103962	14	SCREW, Machine #10-32 X .5"
10	109568	1	FILTER ASSEMBLY, Top Mount Type
	104254	1	• ELEMENT, Filter
	123022	1	• SEAL, Filter Assembly
	123021	1	• COVER, Filter Assembly
	123020	1	• SPRING, Filter Assembly
	122973	1	• CASTING, Aluminum
	121571	1	• SCREW, Set
	122969	1	• BOLT, Washer Combined
	122968	1	• CASING, Filter
	103864	2	HEX HD BOLT, 5/16"-18 X 1"
	103984	2	LOCK NUT, 5/16"-18
	110825	1	FILTER ASSEMBLY, Spin On Type (Not Shown)
	108628	1	• OIL FILTER ELEMENT, Spin On Type (Not Shown)
	108629	1	• HEAD, Spin On Type (Not Shown)
	103855	2	HEX HD BOLT, 1/4"-20 X .500"
	104000	2	LOCK WASHER, 1/4"
11	103032	AR/ft	SUCTION HOSE
	-	-	24Volt, 3/4"ID X 15.5"Lg
	-	-	36Volt, 3/4"ID X 21"Lg
	102854	2	GEAR CLAMP
			Parts list continued on the following page.

Figure 6.4-2, Hydraulic Tray Assembly (Continued)

Index No.	Skyjack Part No.	Qty.	Description
Parts list continued on the following page.			
12	(Ref)	1	HOSE, Emergency Lowering (See Hose Ref Sheet Section 5)
13	(Ref)	1	HOSE, Cushion Cylinder to Manifold RS (See Hose Ref Sheet Section 5)
14	(Ref)	1	HOSE, Cushion Cylinder to Manifold LS (See Hose Ref Sheet Section 5)
15	(Ref)	1	HOSE, Filter to Manifold (See Hose Ref Sheet Section 5)
16	102781	1	LATCK, LH
	103864	3	HEX HD BOLT, 5/16"-18 X 1"
17	103236	1	OIL LEVEL INDICATOR
18	103339	1	DRAIN PLUG
19	(Ref)	1	HOSE, Pump to Manifold (See Hose Ref Sheet Section 5)
20	103148	AR/ft	CABLE, 4AWG
21	103148	AR/ft	CABLE, 4AWG
	102631	1	LABEL, Skyjack Logo Lg.
	105998	1	LABEL, Emergency Down Button
	102505	1	LABEL, Emergency Lowering Valve
	105983	1	LABEL, Power On/Off
	105959	1	LABEL, Battery Disconnect

Figure 6.4-3, Electrical Panel Assembly



Index No.	Skyjack Part No.	Qty.	Description
1	102853 (Ref)	1	TOGGLE SWITCH, Up/Down (If Equipped)
	102851	2	SWITCH ASSEMBLY, Up and Down
	103100	1 per	HEAD, Push Button Black
	103141	1 per	BASE, Contact
	103081	1 per	BLOCK, N.O. Contact
	102667	1	LABEL, Up
	102667	1	LABEL, Down
2	103057	1	BEEPER, 24Volt
3	117325	AR	CIRCUIT BREAKER, 15A
	108558	AR	FUSE HOLDER (If Equipped)
	102773	AR	FUSE, 15A (If Equipped)
4	103336	1	HOUR METER
5	102756	1	FUSE, 200A
6	103068	2	FUSE INSULATOR
7	108589	AR	RELAY, 24Volt (Replace if Required)
8	(Ref)	-	RPLACED WITH ITEM 7
9	103011	1	TERMINAL STRIP
10	104697	1	BUMPER
11	101251	1	ELECTRICAL PANEL
12	103148	AR/ft	CABLE, 4AWG
13	103148	AR/ft	CABLE, 4AWG
14	103101	1	CONTACTOR, Motor
	108666	1	LABEL, Replacement Parts

Figure 6.4-4, Main Manifold Assembly

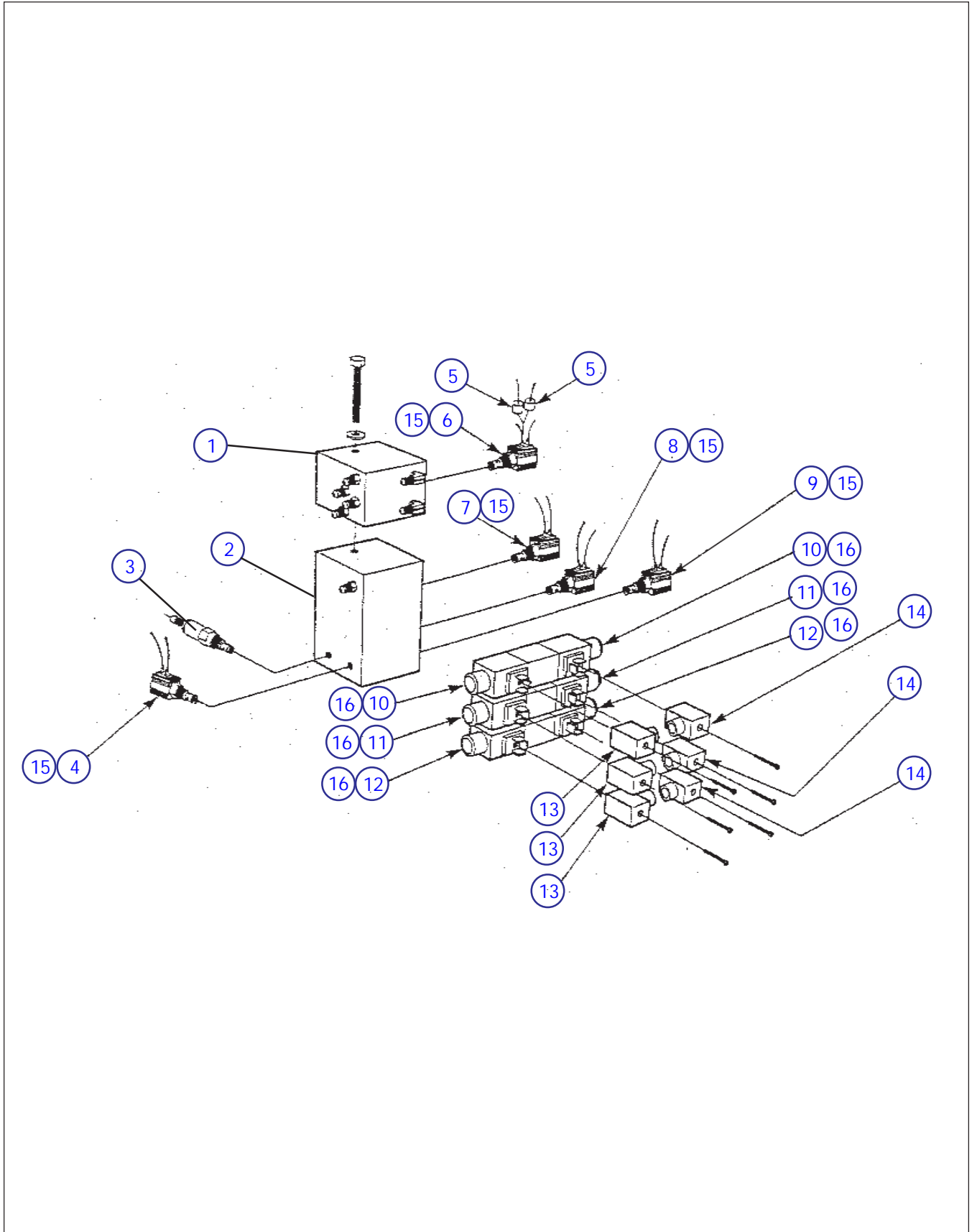


Figure 6.4-4, Main Manifold Assembly

Index No.	Skyjack Part No.	Qty.	Description
1	100419	1	UPPER MANIFOLD
2	103410	1	MAIN MANIFOLD
	103313	1	HELI COIL
	100055	AR	LOWERING ORIFICE, One Lift Cylinder (Red 0.081") (Between Manifolds)
	100057	AR	LOWERING ORIFICE, Two Lift Cylinder (Silver 0.098") (Between Manifolds)
	100058	AR	LOWERING ORIFICE, Three Lift Cylinder (Green 0.128") (Between Manifolds)
	103756	1	KIT, O Ring (Between Manifolds)
	104142	4	• O RING, Small
	104143	3	• O RING, Large
3	103214	1	RELIEF VALVE, Lift Pressure (Must be Set After Installation)
	103214	1	RELIEF VALVE, System Pressure (Must be Set After Installation)
4	103655	1	LOWERING VALVE
5	102921	AR	DIODE, 1A 1000PIV
6	103623	1	BRAKE VALVE
7	103655	1	SPEED VALVE, NC
	100056	1	SPEED ORIFICE, Low Speed 0.076" (Located Behind 1/8" NPT Plug On Bottom of Manifold)
8	103656	1	SPEED VALVE, NO Long Stem
	100059	1	SPEED ORIFICE, Second Speed 0.052" (Located Behind Speed Valve) Refer to Section 5 for Low Amp Circuit Kit if not Already Installed
9	102626	1	DUMP VALVE
	100443	AR	DUMP ORIFICE, Std. Tires 0.076" (Located Behind Dump Valve)
	100451	AR	DUMP ORIFICE, Filled. Tires 0.067" (Located Behind Dump Valve)
	103381	AR	DUMP ORIFICE, 26" Filled. Tires 0.052" (Located Behind Dump Valve)
10	103614	1	3 POSITION/4WAY VALVE, Drive
11	103614	1	3 POSITION/4WAY VALVE, Steer
12	103614	1	3 POSITION/4WAY VALVE, Lift
13	104409	3	CONNECTOR, Black
14	104345	3	CONNECTOR, Gray
15	103605	5	SOLINOID, Valve
16	107439	6	SOLINOID, For 103614 24Volt Vickers Brand
	103346	1	SOLINOID, 24Volt Abex Brand
	103690	1	SOLINOID, 24Volt Rexroth Brand

Figure 6.5-1. Battery Drawer Assembly

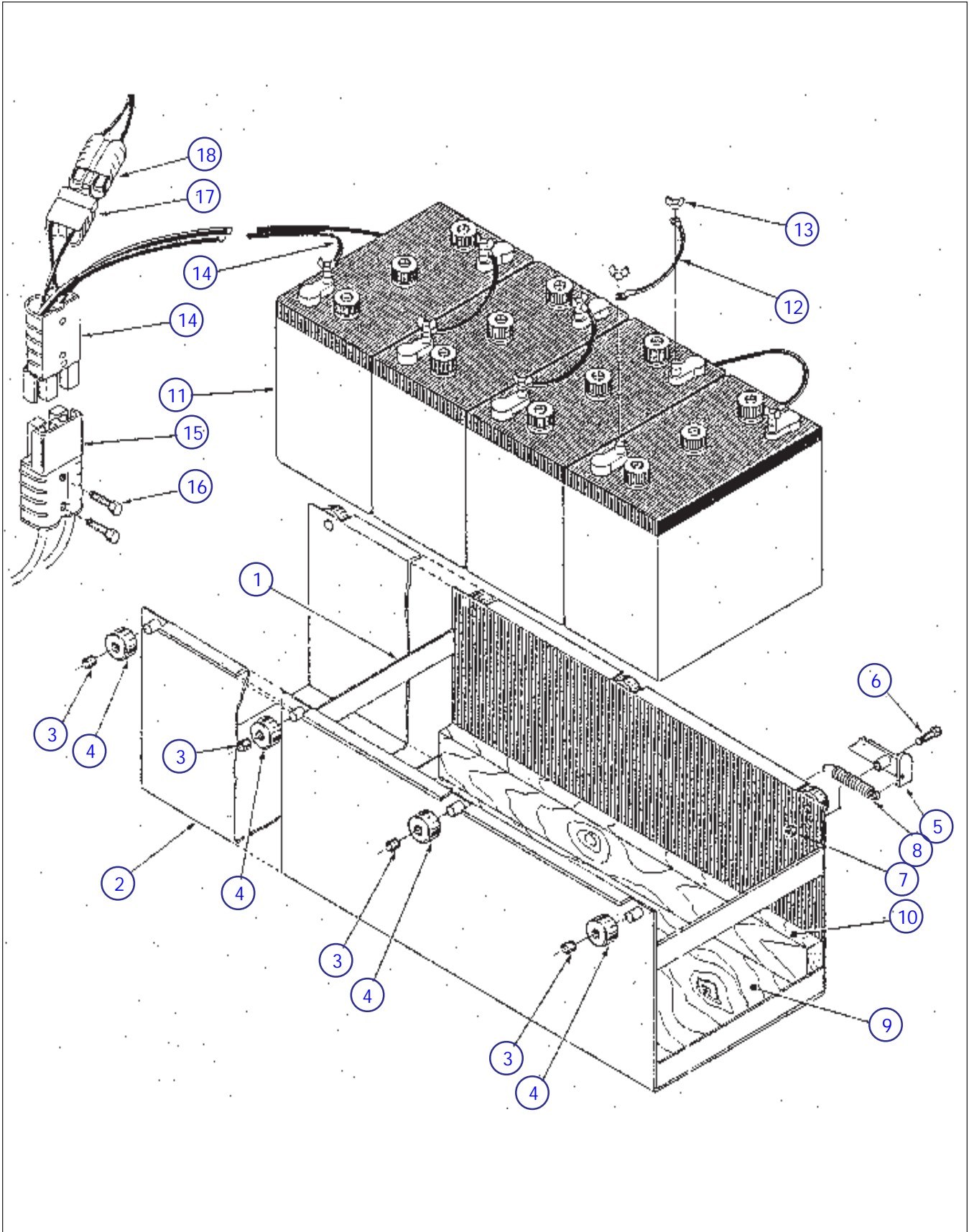
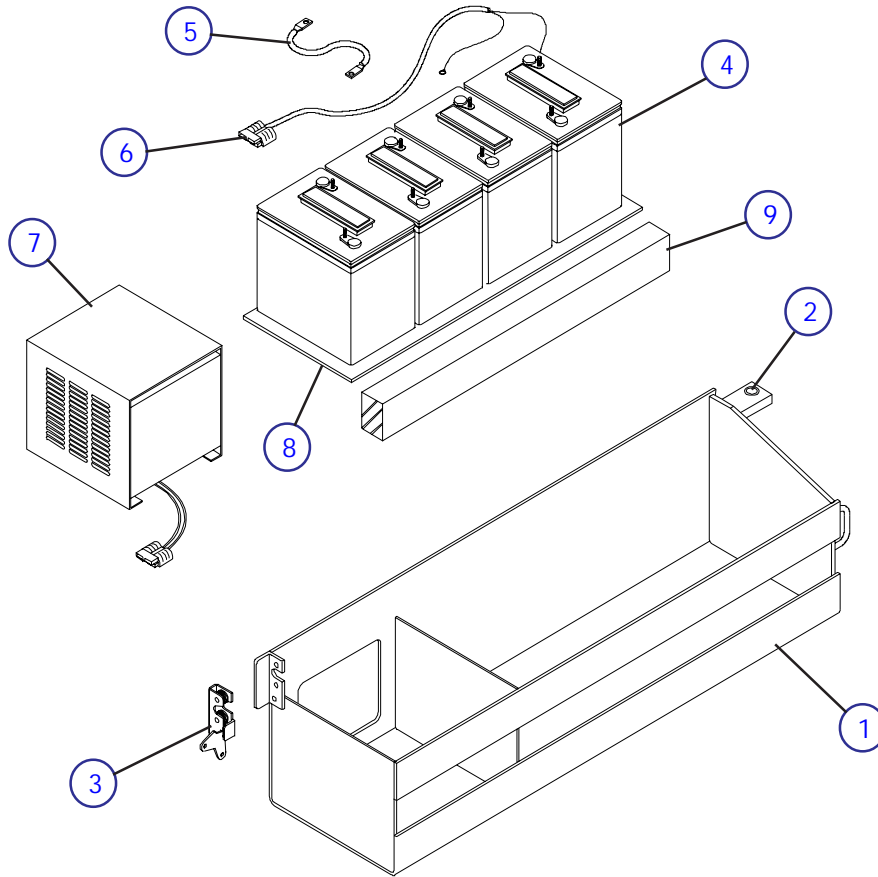


Figure 6.5-1. Battery Drawer Assembly

Index No.	Skyjack Part No.	Qty.	Description
1	N/A	1	BATTERY DRAWER, SJ00X-07 Models
2	N/A	1	BATTERY DRAWER, All Other Models
3	114117	AR	BUSHING, 1/2" ID X 1"
4	106007	AR	ROLLER 1.690"OD
	128079	AR	ROLLER 1.5"OD
5	128080	1	LOCK LEVER
6	103870	1	HEX HD. BOLT, 3/8"-16 X 1.5"
7	103978	1	NUT, 3/8"-16
8	N/A	1	SPRING
9	100440	1	WOOD, Bottom 3/8" Plywood X 10.5" X 28.5"
10	100442	1	WOOD, Side 2" X 3" X 28"
11	103480	AR	BATTERY, 6V 220AH #T2200
	106552	AR	BATTERY, 6V 250AH #J250
12	103237	3	CABLE, Battery Jumper
13	102034	8	NUT, 5/16"-18
	103404	8	LOCK WASHER, 5/16"
14	(Ref)	1	CABLE ASSEMBLY, Plug to Batteries
	103148	AR/ft	• CABLE, #4AWG
	105534	1	• PLUG, 175A
15	(Ref)	1	CABLE ASSEMBLY, Plug to Electric Motor
	103148	AR/ft	• CABLE, #4AWG
	105534	1	• PLUG, 175A
16	103858	2	HEX HD BOLT, 1/4"-20 X 1.250"
	104000	2	LOCK WASHER, 1/4"
17	(Ref)	1	CABLE ASSEMBLY, Charger Plug to Batteries
	102700	AR/ft	• CABLE, #10AWG
	103364	1	• PLUG, 50A
18	(Ref)	1	CABLE ASSEMBLY, Charger Plug to Charger (See Appropriate Charger Parts List Figure 6.5-3 to Figure 6.5-5)
	103364	1	• PLUG, 50A

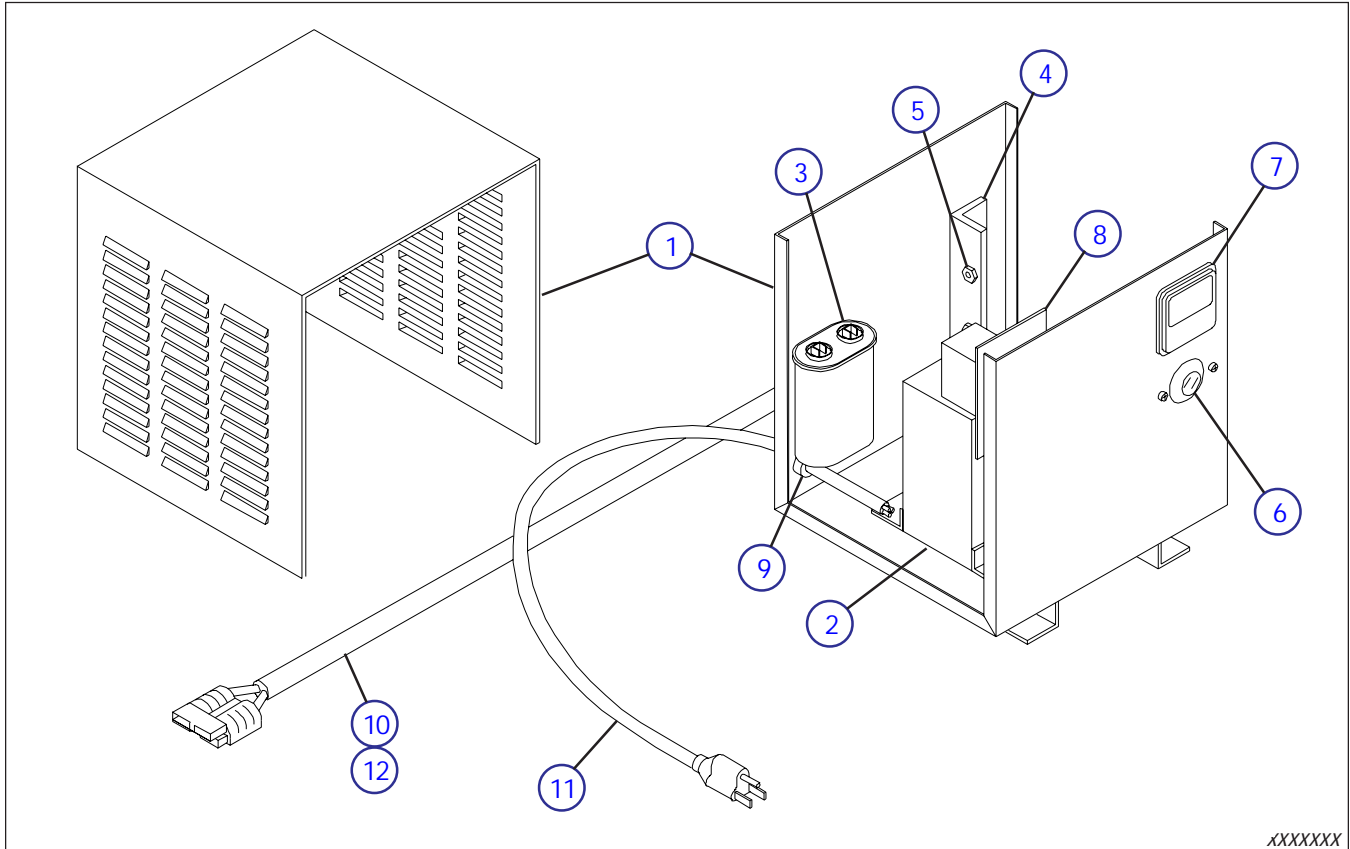
Figure 6.5-2, Battery Tray Assembly



MA-SJII-10

Index No.	Skyjack Part No.	Qty.	Description
1	107562	1	WELDMENT, Battery tray (Replaces 106702)
	107568		WELDMENT, Battery tray 36Volt
2	100335	2	BUSHING, Bronze
3	(Ref.)	1	LATCH ASSEMBLY, Tray
	102780	1	• LATCH, RH
	111534	1	• KNOB, Latch
	103855	1	• BOLT, Hex-hd 1/4-20 x 1/2" lg.
	103864	1	• BOLT, Hex-hd 5/16-18 x 1" lg.
	103866	2	• BOLT, Hex-hd 5/16-18 x 1-1/2" lg.
	103984	2	• NUT, Lock 5/16-18
4	103480	4	BATTERY, 6V 220AH, #T2200
5	103237	3	CABLE, Battery jumper
6	106008	1	CABLE, Battery charger
	103364	1	• PLUG, 50 Amp
7	(Ref.)	1	CHARGER ASSEMBLY, Battery
			(See Parts List Figure 6.5-3 to Figure 6.5-5)
	103364	1	• PLUG, 50 Amp
	100404	2	• CLAMP, Charger
8	100440	1	PLYWOOD, 3/8" x 10-1/2" x 28-1/2" lg.
9	100442	1	SPACER, Wood 2" x 3" x 28" lg.
	102912	1	LABEL, Charger
	102632	1	LABEL, Skyjack Logo Md.

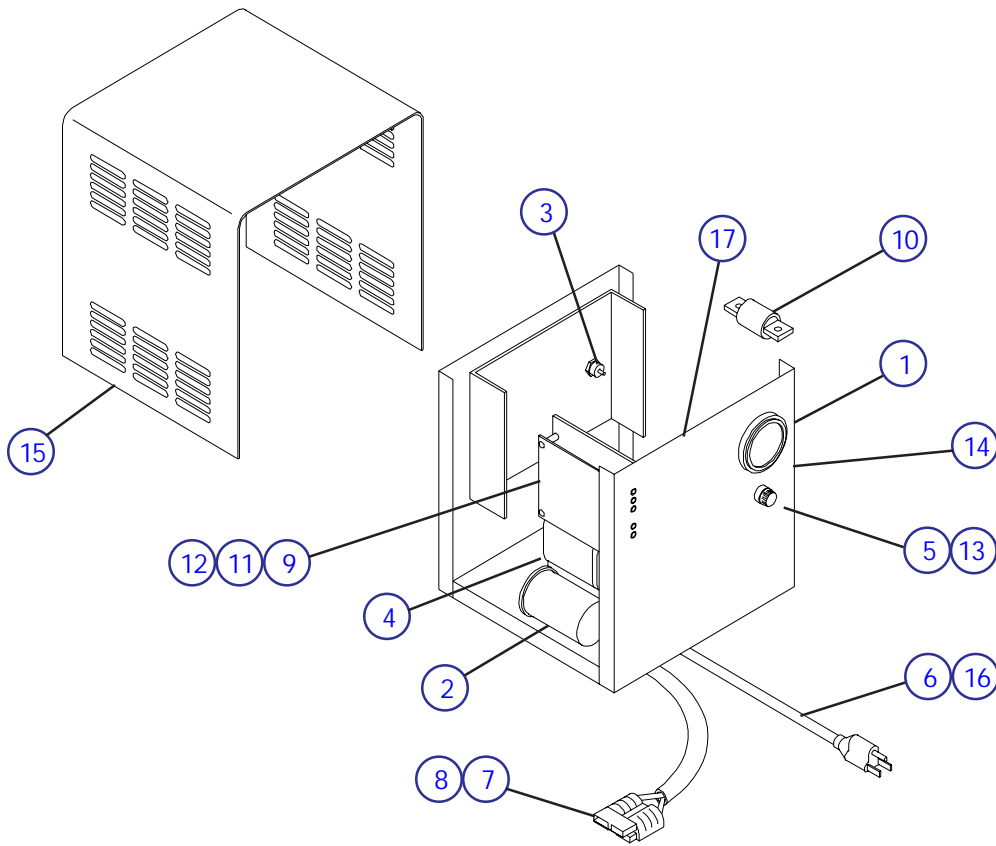
Figure 6.5-3, Battery Charger Assembly
(Lester Models 12870 and 06430)



XXXXXXX

Index No.	Skyjack Part No.	Qty.	Description
A	N/A	1	CHARGER ASSEMBLY, Battery 24V, 120VAC (LESTER MODEL 12870)
B	103262	1	CHARGER ASSEMBLY, Battery 36V, 120VAC (LESTER MODEL 06430)
1	104255	1	• CASE, Charger, A
	104276	1	• CASE, Charger, B
2	104256	1	• TRANSFORMER, A
	104275	1	• TRANSFORMER, B
3	106066	1	• CAPACITOR
4	104264	1	• HEATSINK W/DIODES
5	104263	2	• DIODE ASSEMBLY
6	104257	1	• FUSE ASSEMBLY
7	104262	1	• AMMETER, 0-50 Amps
8	104248	1	• TIMER, A
	104274	1	• TIMER, B
9	106094	1	• RELIEF, AC Cord
10	104260	1	• RELIEF, DC Cord
11	104249	1	• CORD & PLUG, AC, A
	104272	1	• CORD, AC, B
12	104258	1	• CORD & PLUG, DC, A
	104277	1	• CORD & PLUG, DC, B
	103364	1	• PLUG, 50 Amp (1)
			N/A - Not available for service, order Motor Appliance charger PT# 108592

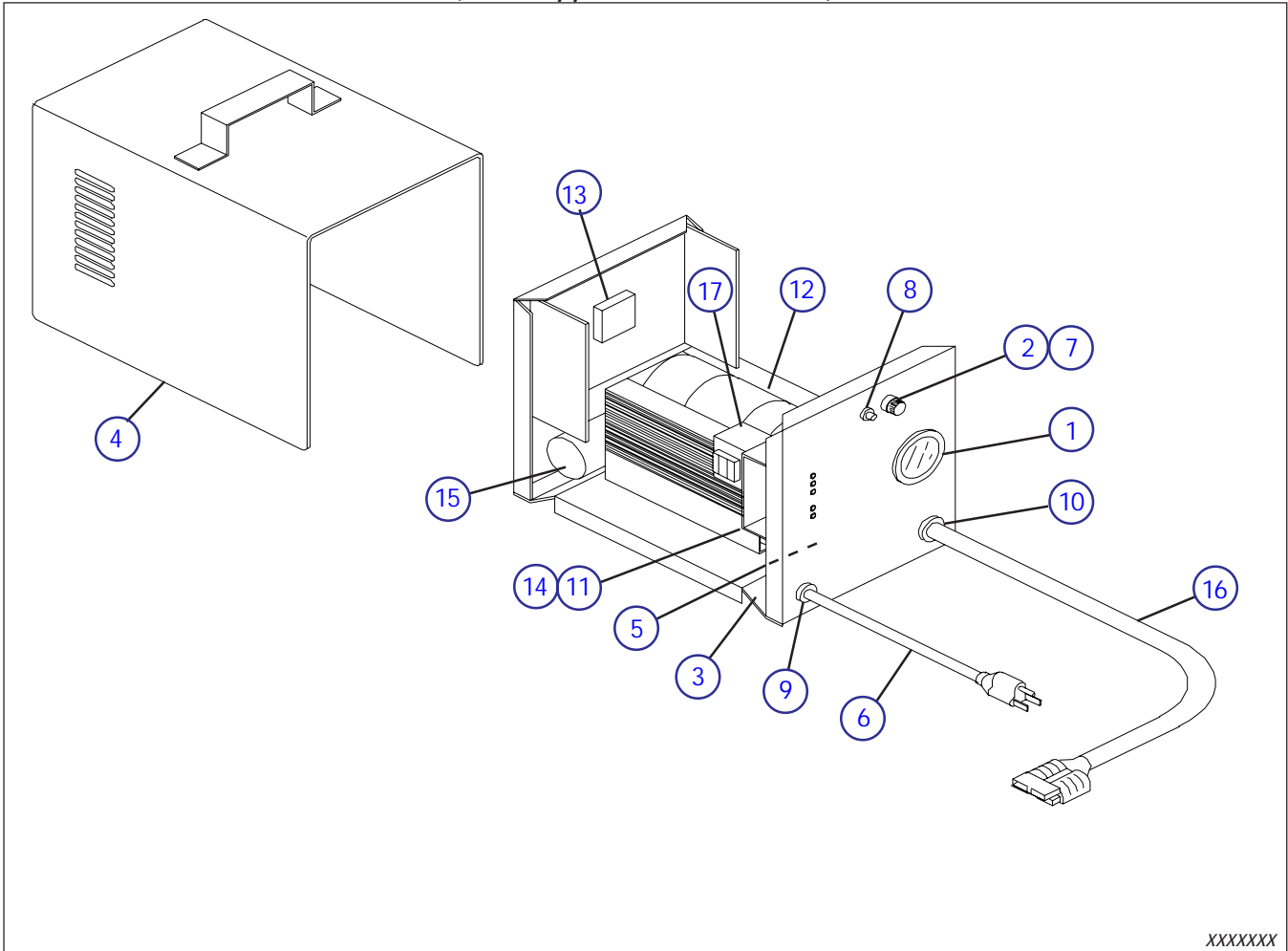
**Figure 6.5-4 Battery Charger Assembly
(Motor Appliance Model BA610 and BA300)**



MA-SJII-39A

Index No.	Skyjack Part No.	Qty.	Description
	108592		CHARGER ASSEMBLY, Battery 24V40A, 120VAC, 60Hz
1	109100	1	• AMMETER, 0-75
2	109102	1	• CAPACITOR
3	108556	1	• DIODE
4	109108	1	• TRANSFORMER
5	108558	1	• HOLDER, Fuse
6	109101	1	• CORD, AC
7	109104	1	• CORD, DC
8	103364	1	• • PLUG, 50 Amp
8	109105	1	• RELIEF, DC Strain
9	108562	1	• TRIAC
10	109107	1	• FUSE, DC
11	108564	1	• TRANSFORMER
12	108565	1	• CONTROL CIRCUIT, VFC2200
13	109103	1	• FUSE, AC AGC20
14	N/A	1	• BASE, Charger
15	122996	1	• COVER, Charger
16	109106	1	• RELIEF, AC Strain
17	115315	1	• RELAY, Charger cutout 120VAC (BA610)

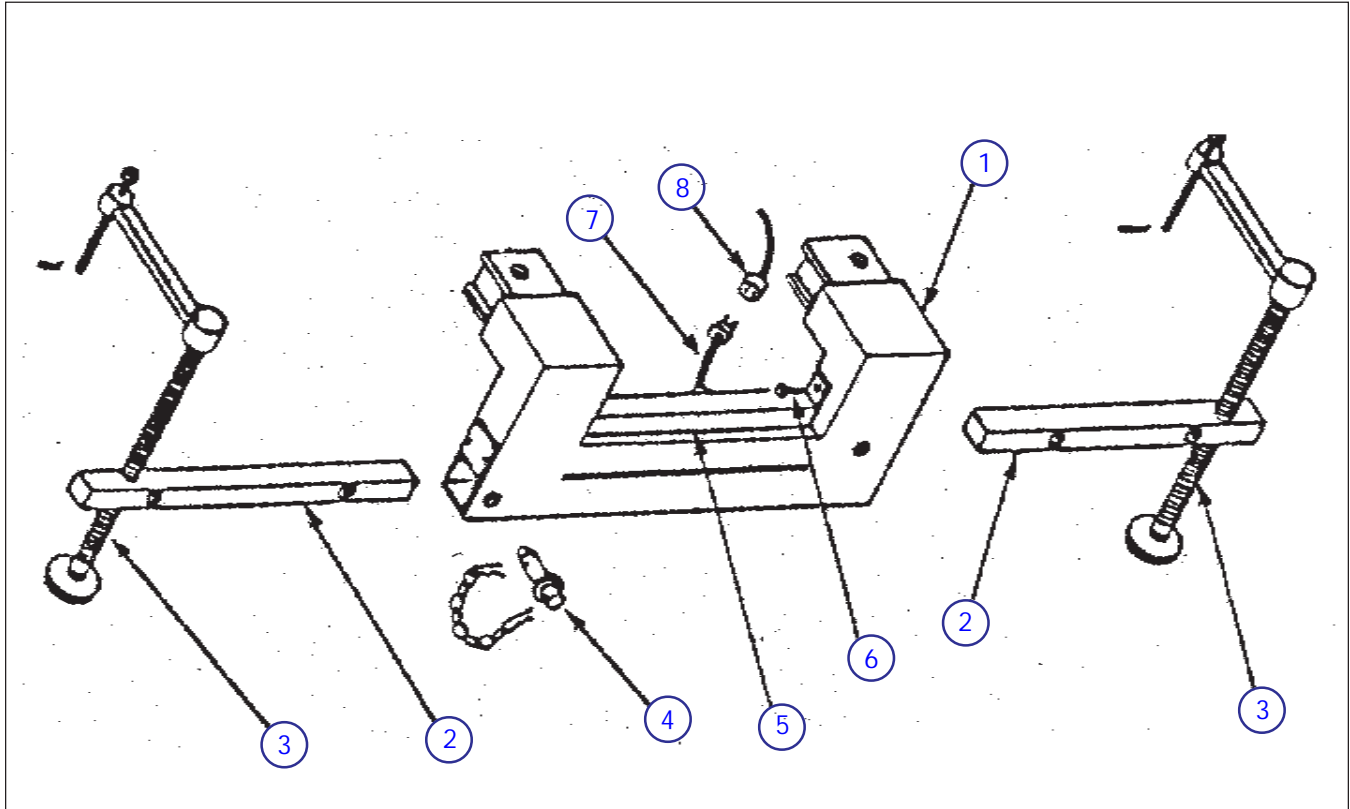
Figure 6.5-5, Battery Charger Assembly
(Motor Appliance Model B9338)



XXXXXXX

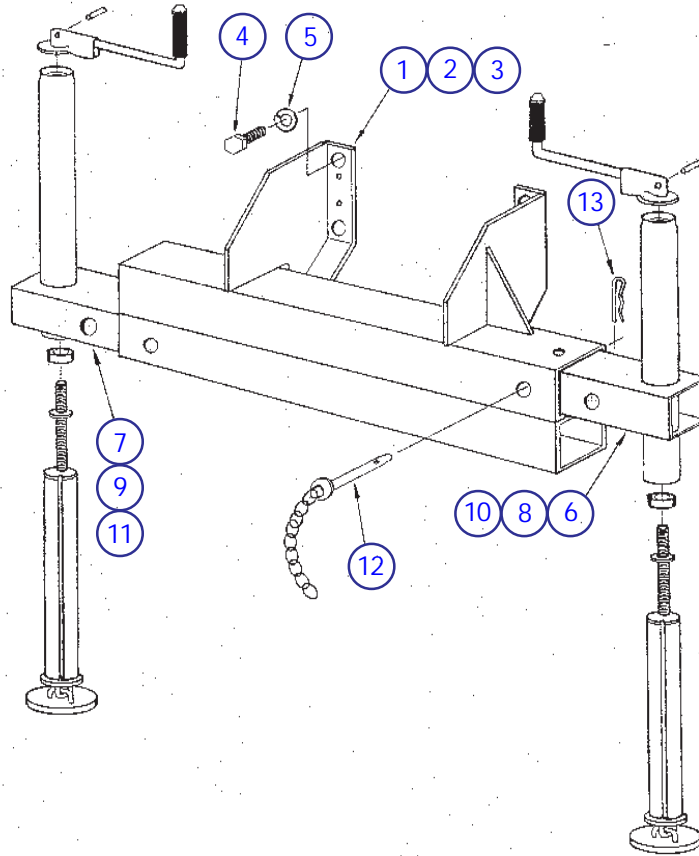
Index No.	Skyjack Part No.	Qty.	Description
	110550	-	CHARGER ASSEMBLY, Battery, 24V20A, 120VAC, 60Hz
1	110854	1	• AMMETER
2	110855	1	• FUSE, AC AGC10
3	N/A	1	• BASE, Charger
4	N/A	1	• COVER W/HANDLE, Charger
5	110856	1	• CIRCUIT BREAKER
6	108559	1	• CORD, AC
7	108558	1	• HOLDER, Fuse
8	110857	1	• BUTTON, Charger stop
9	108561	1	• RELIEF, Strain, AC cord
10	109105	1	• RELIEF, Strain, DC cord
11	108562	1	• TRIAC
12	110858	1	• POWER TRANSFORMER
13	110859	1	• RECTIFIER
14	110860	1	• CONTROL CIRCUIT
15	109102	1	• CAPACITOR
16	110861	1	• ORD, DC
	103364	1	• • PLUG, 50 Amp
17	110862	1	• TRANSFORMER, Control circuit

Figure 6.6-1, Tube Mounted Outrigger Assembly



Index No.	Skyjack Part No.	Qty.	Description
1	N/A	2	OUTRIGGER FRAME, Tube Mounted SJ00X-07 Models
	N/A	2	OUTRIGGER FRAME, Tube Mounted SJ00X-10, SJ00X-13 Models
2	106013	4	EXTENSION TUBE, 2 1/2"
3	128068	4	SCREW JACK
	128069	4	JACK HANDLE
	128070	4	JACK HANDLE KNOB
4	106017	4	LOCKING PIN
	103055	4	LOCKING PIN RETAINING CLIP
5	100612	2	LIMIT SWITCH WIRING COVER, SJ00X-07 Models
	100620	2	LIMIT SWITCH WIRING COVER, SJ00X-10, SJ00X-13 Models
6	103855	4	HEX HD BOLT, 1/4"-20 X .5"
	104000	4	LOCK WASHER, 1/4"
	103995	4	FLAT WASHER, 1/4" SAE
7	(Ref)	-	CABLE ASSEMBLY, Switches to Plug
	103256	AR/ft	CABLE, 18/2
	107712	1	• CONNECTOR ASSEMBLY, 5 Pole Male (When Replacing Old Style Connector Also Order Connector PT# 107711)
	103567	1 per	• • HOUSING
	103569	1 per	• • MALE INSERT 4 PIN + GROUND
8	(Ref)	-	CABLE ASSEMBLY, Plug to Panel
	103255	AR/ft	CABLE, 18/4
	107711	1	• CONNECTOR ASSEMBLY, 5 Pole Female (When Replacing Old Style Connector Also Order Connector PT# 107712)
	103568	1 per	• • HOUSING c/w LATCH
	103570	1 per	• • FEMALE INSERT 4 PIN + GROUND

Figure 6.6-2, Bolt-on Mounted Outrigger Assembly



Index No.	Skyjack Part No.	Qty.	Description
1	100641	2	OUTRIGGER FRAME, SJ00X-07
2	100664	2	OUTRIGGER FRAME, All SJ00X-10, SJ00X-13, SJ00X-15 Models, EXCEPT SJ007-15, SJ009-17-10, and SJ009-17-13 Models
3	100667	2	OUTRIGGER FRAME, SJ007-15, SJ009-17-10 and SJ009-17-13
4	128081	4per	HEX HD BOLT, 5/8"-11 X .750"
5	103998	4per	LOCK WASHER, 5/8"
6	100656	2	OUTRIGGER EXTENSION, Upper Assembly, SJ00X-07 Models
7	100649	2	OUTRIGGER EXTENSION, Lower Assembly, SJ00X-07 Models
8	100659	2	OUTRIGGER EXTENSION, Upper Assembly, All SJ00X-10, SJ00X-13, SJ00X-15 Models, EXCEPT SJ007-15, SJ009-17-10, and SJ009-17-13 Models
9	100657	2	OUTRIGGER EXTENSION, Lower Assembly, All SJ00X-10, SJ00X-13, SJ00X-15 Models, EXCEPT SJ007-15, SJ009-17-10, and SJ009-17-13 Models
10	100661	2	OUTRIGGER EXTENSION, Upper Assembly, SJ007-15, SJ009-17-10 and SJ009-17-13
11	100660	2	OUTRIGGER EXTENSION, Lower Assembly, SJ007-15, SJ009-17-10 and SJ009-17-13
12	100349	4	LOCKING PIN
13	103055	4	LOCKING PIN RETAINING CLIP